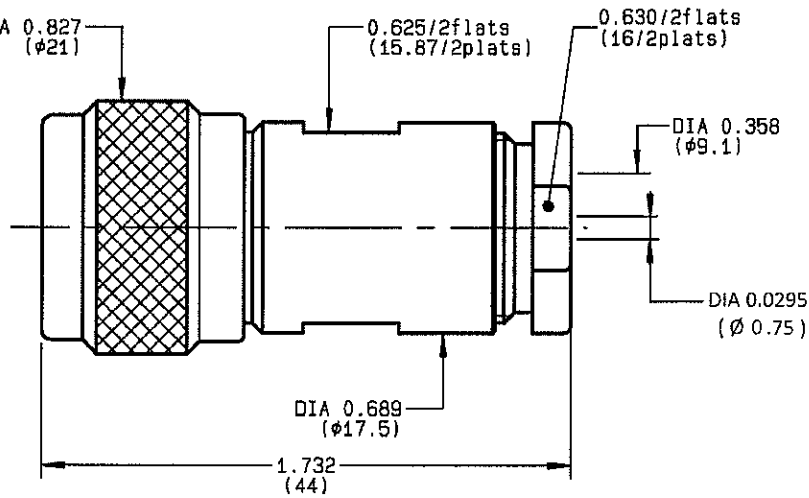



<b>STRAIGHT PLUG CLAMP TYPE CABLE 8/75 D</b>	<b>R162.013.000</b> SERIES N 75
--	------------------------------------



NOMINAL IMPEDANCE	<b>75</b> Ω	CABLES : M17/2- RG6
FREQUENCY RANGE	<b>0-1.5</b> GHz	
TEMPERATURE RATING	<b>-55/+155</b> °C	
V.S.W.R	<b>1.06</b> + x F(GHz)Maxi	
RF INSERTION LOSS	<b>0.15</b> √F(GHz) dB Maxi	
VOLTAGE RATING	<b>1400</b> Veff Maxi	
DIELECTRIC WITHSTANDING VOLTAGE	<b>2500</b> Veff Mini	
INSULATION RESISTANCE	<b>5000</b> MΩMini	OTHERS CHARACTERISTICS
HERMETIC SEAL	<b>NA</b> Atm.cm <sup>3</sup> /s	CABLE RETENTION
LEAKAGE (pressurized only)	<b>NA</b>	<b>200</b> N Mini
MECHANICAL DURABILITY	<b>500</b> Cycles	CENTER CONTACT RETENTION
WEIGHT	<b>53.2</b> gr	Axial force - mating end
SPECIFICATION		<b>NA</b> N Mini
		Axial force - opposite end
		<b>NA</b> N Mini
		Torque
		<b>NA</b> cm.N Mini
		RECOMMENDED TORQUES
		Mating
		<b>130</b> cm.N
		Panel nut
		<b>NA</b> cm.N
		Clamp nut
		<b>500</b> cm.N

CONNECTOR PARTS:	MATERIALS	FINISH	(all values are given in micrometers)
BODY	BRASS	BBR 2	
OUTER CONTACT	BRASS	BBR 2	
CENTER CONTACT	BRASS	GOLD 0.5 OVER NICKEL 2	
INSULATOR	PTFE	-	
GASKET	SILICONE RUBBER	-	
OTHERS PIECES	BRASS	BBR 2	

ISSUE <b>1135D01</b>	CREATION DATE <b>26/10/1993</b>	FILE PART-NUMBER <b>EPC 96-07</b>	
-------------------------	------------------------------------	--------------------------------------	--

BONDINI

The information given here is subject to change without notice. Design changes may be in order to improve the product.

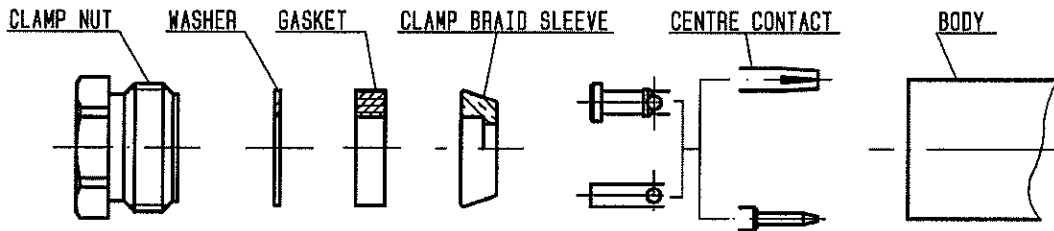
Connect to the future



**R162.013.000**

ISSUE 1135D01

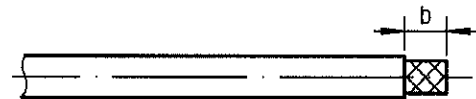
SERIES  
N 75



①

Strip the cable .

-  
-  
-  
-

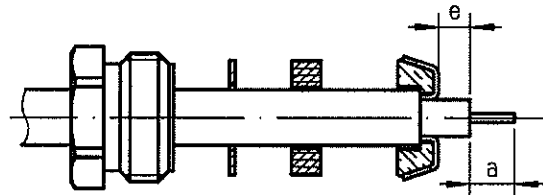


Stripping	a	b	c	d	e
inch	0.177	0.394	0	0	0.059
mm	4.5	10			1.5

②

Slide the clamp nut , the washer and the gasket onto the cable .  
Slide clamp braid sleeve over braid .  
Fold back braid and trim off surplus braid .  
Trim back dielectric as shown .

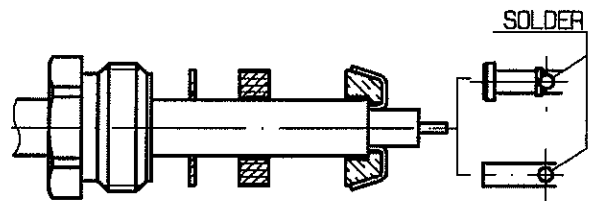
-



③

Solder the cable inner conductor into centre contact .

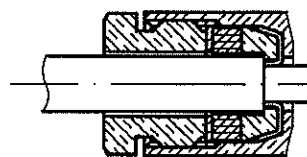
-  
-  
-  
-



④

Screw sub-assembly into the connector body .  
( recommended coupling torque 44.25 in.lb )

-  
-



Hex. : 0.63/flats

BONDMINI