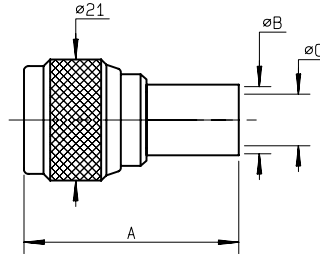


## STRAIGHT PLUGS, CRIMP TYPE, FOR FLEXIBLE CABLES



cable	part number	dimensions			captured center contact	mounting
		A	B	C		
6 / 75 / S	<b>R162 084 000</b>	33.9	6.6	4	YES	M33
10 / 75 / S	<b>R162 075 000</b>	37.25	11.05	7.46	YES	M33
11 / 75 / D	<b>R162 088 000</b>	37.25	11.4	7.46	YES	M33

## STRAIGHT PLUGS, CLAMP TYPE, FOR FLEXIBLE CABLES

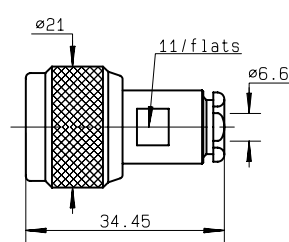


Fig. 1

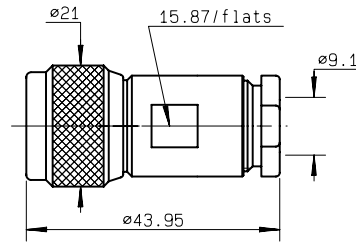


Fig. 2

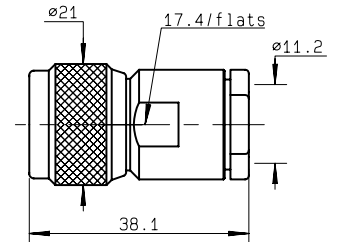
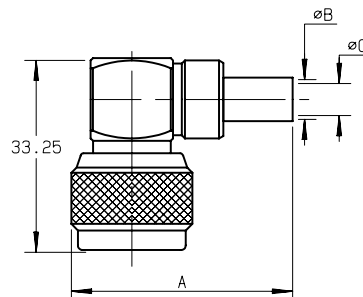


Fig. 3

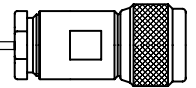
cable	part number	fig.	captured center contact	mounting
6 / 75 + 93	<b>R162 012 000</b>	1	NO	M02
8 / 75 / D	<b>R162 013 000</b>	2	NO	M16
10 + 11 / 75	<b>R162 017 000</b>	3	NO	M04

## RIGHT ANGLE PLUGS, CRIMP TYPE, FOR FLEXIBLE CABLES

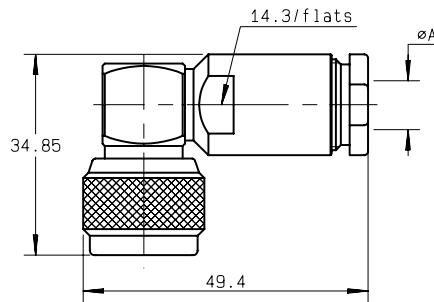


cable	part number	dimensions			captured center contact	mounting
		A	B	C		
6 / 75 / S	<b>R162 184 000</b>	38.25	6.6	4	YES	M33
10 / 75 / S	<b>R162 185 000</b>	42.25	11.05	7.46	YES	M33
11 / 75 / D	<b>R162 187 000</b>	42.25	11.4	7.46	YES	M33

Note : standard packaging = 50 pieces. For unit packaging, add "W" after the P/N.

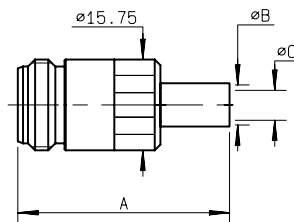


### RIGHT ANGLE PLUGS, CLAMP TYPE, FOR FLEXIBLE CABLES



cable	part number	dimensions A	captured center contact	mounting
6 / 75 + 93	<b>R162 162 000</b>	6.5	YES	M16
10 + 11 / 75	<b>R162 168 000</b>	11.2	YES	M16

### STRAIGHT JACKS, CRIMP TYPE, FOR FLEXIBLE CABLES



cable	part number	dimensions			captured center contact	mounting
		A	B	C		
6 / 75 / S	<b>R162 239 000</b>	36.6	6.6	4	YES	M33
10 / 75 / S	<b>R162 241 000</b>	40.6	11.05	7.46	YES	M33
11 / 75 / D	<b>R162 243 000</b>	40.6	11.4	7.46	YES	M33

### STRAIGHT JACKS, CLAMP TYPE, FOR FLEXIBLE CABLES

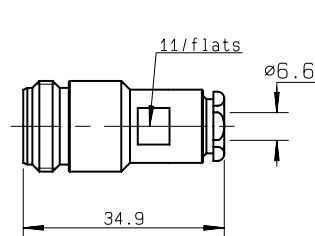


Fig. 1

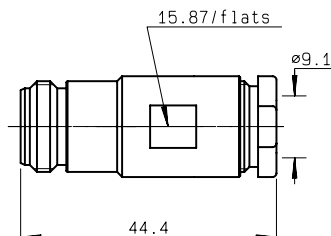


Fig. 2

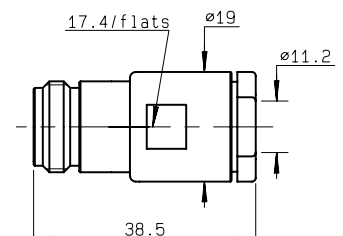


Fig. 3

cable	part number	fig.	captured center contact	mounting
6 / 75 + 93 / S	<b>R162 212 000</b>	1	NO	M02
8 / 75 / D	<b>R162 213 000</b>	2	NO	M16
10 + 11 / 75	<b>R162 217 000</b>	3	NO	M04

Note : standard packaging = 50 pieces. For unit packaging, add "W" after the P/N.