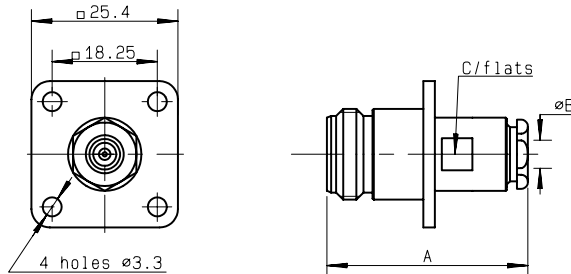
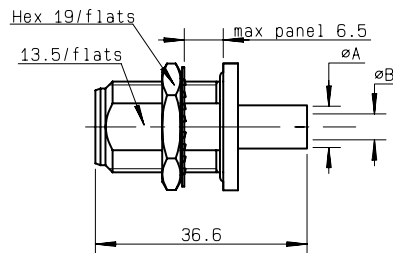


SQUARE FLANGE STRAIGHT JACKS, CLAMP TYPE, FOR FLEXIBLE CABLES



cable	part number	dimensions			captured center contact	mounting	panel
		A	B	C			
6 / 75 + 93 / S	R162 262 000	34.9	6.6	11	NO	M02	P03
10 + 11 / 75	R162 267 000	38.5	11.2	17.4	NO	M04	P03

STRAIGHT BULKHEAD JACKS, CRIMP TYPE, FOR FLEXIBLE CABLES



cable	part number	dimensions		captured center contact	mounting	panel
		A	B			
6 / 75 / S	R162 335 000	6.6	4	YES	M33	P01
10 / 75 / S	R162 336 000	11.05	7.46	YES	M33	P01
11 / 75 / D	R162 339 000	11.4	7.46	YES	M33	P01

STRAIGHT BULKHEAD JACKS, CLAMP TYPE, FOR FLEXIBLE CABLES

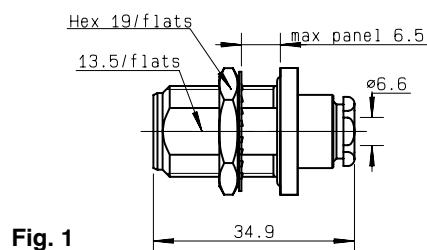


Fig. 1

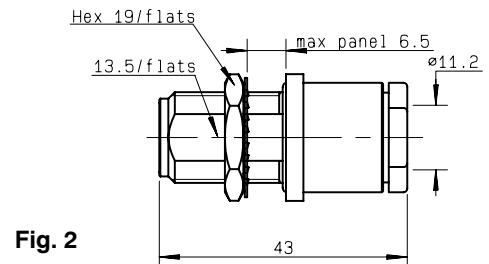


Fig. 2

cable	part number	fig.	captured center contact	mounting	panel
6 / 75 + 93 / S	R162 328 000	1	NO	M02	P01
10 + 11 / 75	R162 332 000	2	NO	M04	P01

Note : standard packaging = 50 pieces. For unit packaging, add "W" after the P/N.