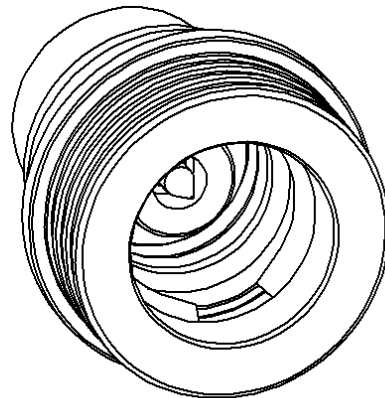
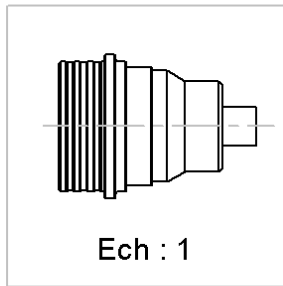
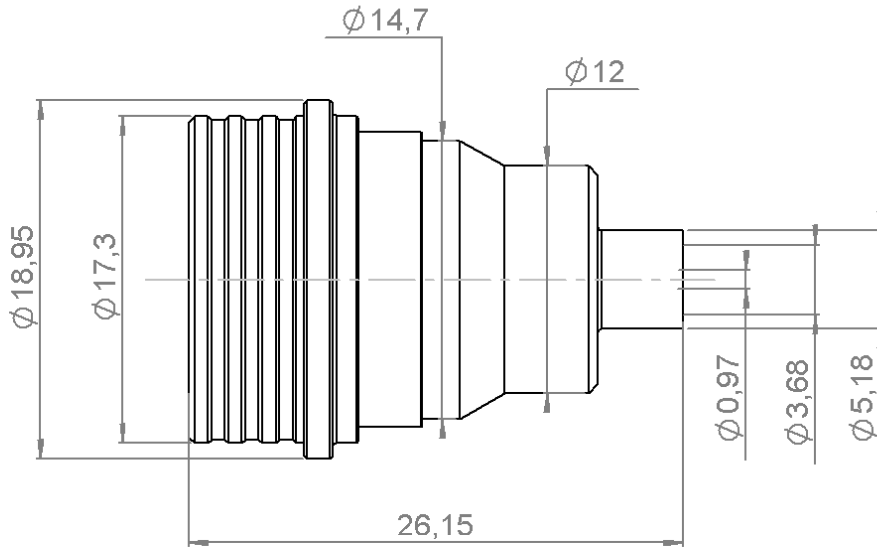


**STRAIGHT PLUG SOLDER TYPE**

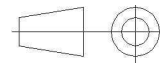
**R164.051.002**

**CABLE .141**

Series : QN



All dimensions are in mm.



COMPONENTS	MATERIALS	PLATING (µm)
BODY	BRASS	BBR 0.5 OVER SILVER 3
CENTER CONTACT	BERYLLIUM COPPER	GOLD 1.3 OVER COPPER 2.5
OUTER CONTACT	BERYLLIUM COPPER	NPGR
INSULATOR	PTFE	
GASKET	EPDM	
OTHERS PARTS	BRASS	GOLD 1 OVER COPPER 2
-	-	-
-	-	-

Issue : 1308 E

In the effort to improve our products, we reserve the right to make changes judged to be necessary.



**RADIALL**®

**STRAIGHT PLUG SOLDER TYPE**

**R164.051.002**

**CABLE .141**

Series : QN

**PACKAGING**

Standard	Unit	Other
50	'W' option	Contact us

**SPECIFICATION**

**ELECTRICAL CHARACTERISTICS**

Impedance		<b>50</b> Ω
Frequency		<b>*0-6</b> GHz
VSWR	<b>1.05</b> +	<b>0,0250</b> x F(GHz) Maxi
Insertion loss		<b>0.048</b> √F(GHz) dB Maxi
RF leakage	- (	<b>**90</b> - F(GHz)) dB Maxi
Voltage rating		<b>350</b> Veff Maxi
Dielectric withstanding voltage		<b>1000</b> Veff mini
Insulation resistance		<b>5000</b> MΩ mini

**CABLE ASSEMBLY**

Stripping	a	b	c	d	e	f
mm	3,17	0,00	0,00	0,00	0,00	0,00

Assembly instruction :

Recommended cable(s)  
 RG 402  
 KS 2  
 HC80000-3  
 BELN YQ43858

Characteristics indicated on this data sheet are those that can be achieved with the highest performance cable. Intrinsic limitations of the cable may diminish the performance of the assembly

Cable retention

- pull off	<b>270</b> N mini
- torque	<b>NA</b> N.cm

**MECHANICAL CHARACTERISTICS**

Center contact retention		
Axial force – Mating end	<b>27</b> N mini	
Axial force – Opposite end	<b>27</b> N mini	
Torque	<b>NA</b> N.cm mini	

**TOOLING**

Part Number	Description	Hexagon
.	.	.
R282.053.000	STRIPPING TOOL	
R282.067.000	POINTER GAUGE	

Recommended torque		
Mating	<b>NA</b> N.cm	
Panel nut	<b>NA</b> N.cm	
Clamp nut	<b>NA</b> N.cm	
A/F clamp nut	<b>0,0000</b> mm	

Mating life	<b>100</b> Cycles mini
Weight	<b>18,1040</b> g

**OTHER CHARACTERISTICS**

- \* Usable 0-11GHz
- \*\* RF Leakage: -80dBm 3<F<6GHz
- \*\*\* PIM3 : -112dBm (2 x 20W at 1.8GHz)

**ENVIRONMENTAL**

Operating temperature	<b>-55/+125°</b> °C
Hermetic seal	<b>NA</b> Atm.cm3/s
Panel leakage	

Issue : 1308 E

In the effort to improve our products, we reserve the right to make changes judged to be necessary.

