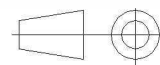
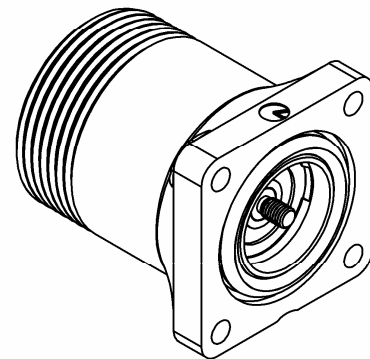
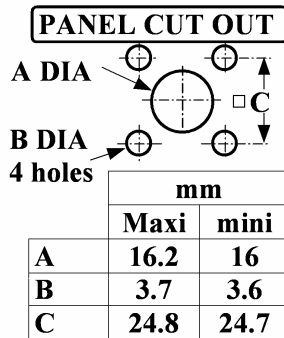
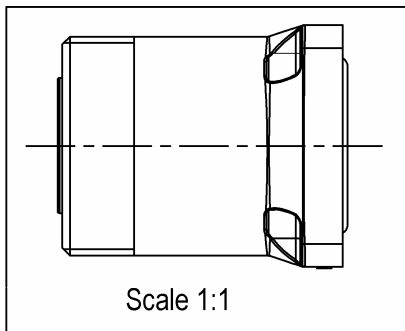
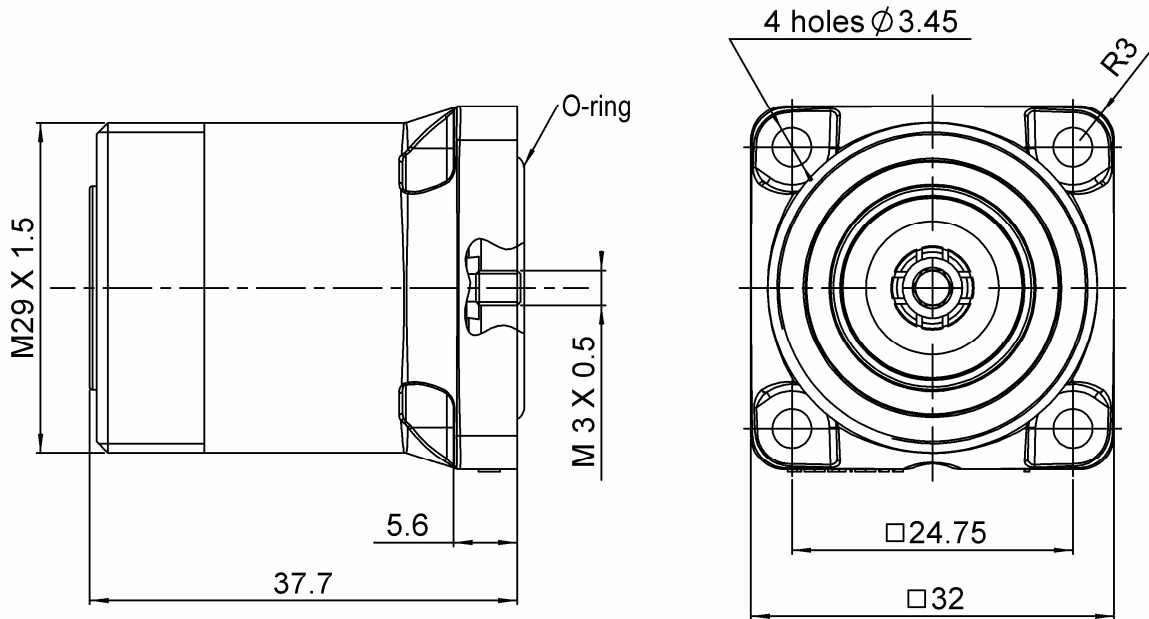


**COMPOSITE SQUARE FLANGE JACK RECEPTACLE**

**R187.413.000**

**PANEL SEAL – FRONT MOUNTING M3 SCREW**

Series : 7/16  
**COMPOSITE**



All dimensions are in mm.

COMPONENTS	MATERIALS	PLATING (µm)
<b>BODY</b>	<b>COMPOSITE MATERIAL - BLACK</b>	-
<b>CENTER CONTACT</b>	<b>BRONZE</b>	<b>SILVER 5 OVER COPPER 0.5</b>
<b>OUTER CONTACT</b>	<b>BRASS</b>	<b>BBR 0.5 OVER SILVER 8</b>
<b>INSULATOR</b>	<b>PTFE</b>	-
<b>GASKET</b>	<b>SILICONE RUBBER</b>	-
<b>OTHERS PARTS</b>	-	-
-	-	-
-	-	-

Issue : 0935 C

In the effort to improve our products, we reserve the right to make changes judged to be necessary.



**COMPOSITE SQUARE FLANGE JACK RECEPTACLE**

**R187.413.000**

**PANEL SEAL – FRONT MOUNTING M3 SCREW**

Series : 7/16  
**COMPOSITE**

**PACKAGING**

**SPECIFICATION**

Standard	Unit	Other
<b>40</b>	<b>'W' option</b>	<b>Contact us</b>

**ELECTRICAL CHARACTERISTICS**

**ENVIRONMENTAL**

Impedance **50** Ω  
 Frequency **0-7.5** GHz  
 VSWR **\*1.06 + 0.0000** x F(GHz) Maxi  
 Insertion loss **0.05** √F(GHz) dB Maxi  
 RF leakage - ( **NA** - F(GHz)) dB Maxi  
 Voltage rating **1400** Veff Maxi  
 Dielectric withstanding voltage **2700** Veff mini  
 Insulation resistance **10000** MΩ mini

Operating temperature **-40/+85** ° C  
 Hermetic seal **Atm.cm3/s**  
 Panel leakage **IP67**

**OTHER CHARACTERISTICS**

Assembly instruction

Others :

\*VSWR : 1.06 between DC to 3 GHz  
 \*VSWR : 1.1 between 3 to 7 GHz  
 PIM3:-125dBm under 2 carriers of +43dBm

**MECHANICAL CHARACTERISTICS**

Center contact retention  
 Axial force – Mating end **200** N mini  
 Axial force – Opposite end **NA** N mini  
 Torque **NA** N.cm mini

Recommended torque  
 Mating **N.cm**  
 Panel nut **N.cm**

Mating life **500** Cycles mini  
 Weight **41.0000** g

Issue : 0935 C

In the effort to improve our products, we reserve the right to make changes judged to be necessary.

