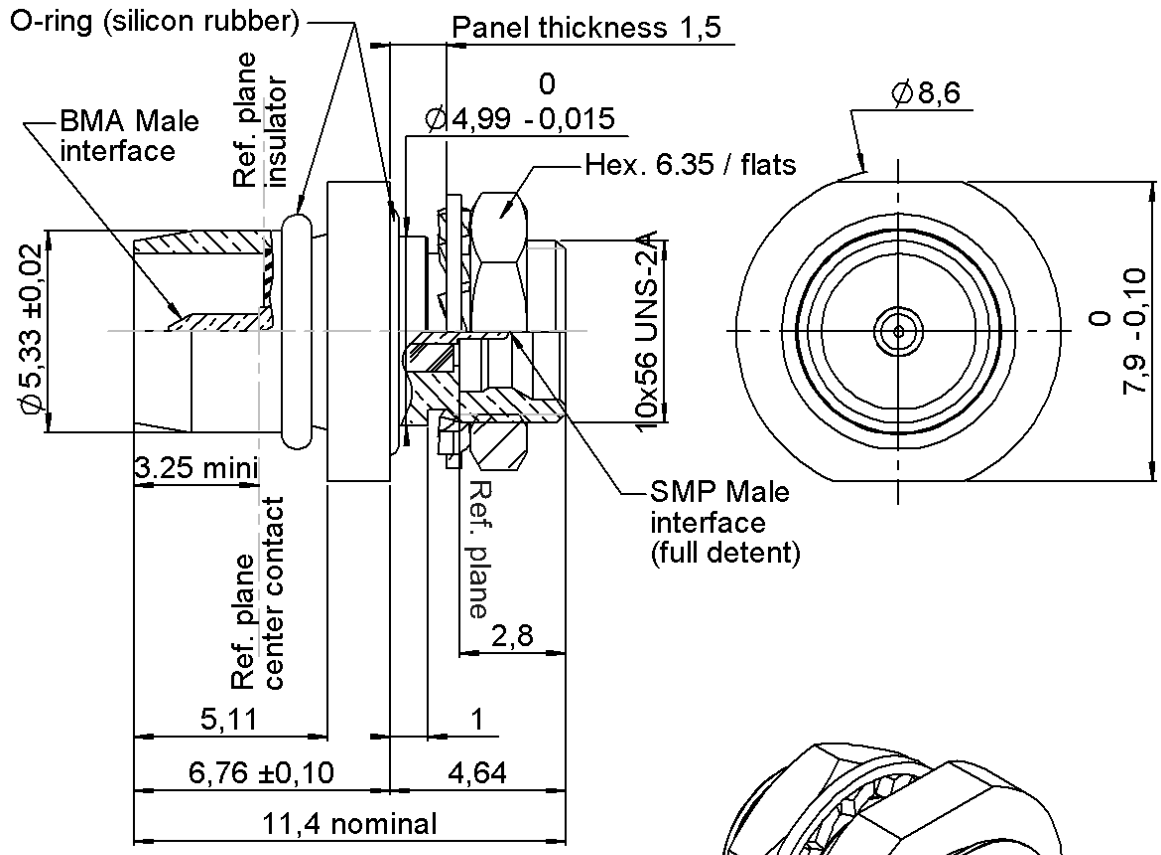
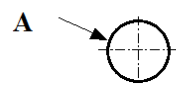


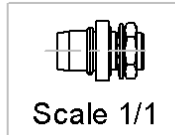
PAGE 1/2	ISSUE 08-09-15A	SERIES ADAPTER	PART NUMBER R191811110
----------	-----------------	-------------------	------------------------



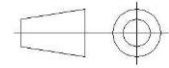
PANEL CUT OUT



	mm	
	Maxi	mini
A	5.02	5.00



All dimensions are in mm.



COMPONENTS	MATERIALS	PLATING (µm)
Body	BRASS	BBR 2
Center contact	BERYLLIUM COPPER	GOLD 1.27 OVER NICKEL 1.27
Outer contact	-	-
Insulator	PTFE	
Gasket	SILICONE RUBBER	
Others parts	BRASS	GOLD 0.2 OVER NICKEL 2
-	-	-
-	-	-

PAGE 2/2	ISSUE 08-09-15A	SERIES ADAPTER	PART NUMBER R191811110
-----------------	------------------------	--------------------------	-------------------------------

PACKAGING

Standard	Unit	Other
1	Contact us	Contact us

ELECTRICAL CHARACTERISTICS

Impedance		50	Ω	
Frequency		0-22	GHz	
VSWR	1.15	+	0,0000	x F(GHz) Maxi
Insertion loss		0.12	√F(GHz) dB Maxi	
RF leakage	- (NA	- F(GHz) dB Maxi	
Voltage rating		335	Veff Maxi	
Dielectric withstanding voltage		500	Veff mini	
Insulation resistance		5000	MΩ mini	

ENVIRONMENTAL

Operating	-65/+125	°C
Hermetic seal	NA	Atm.cm3/s
Panel leakage	IP67	

MECHANICAL CHARACTERISTICS

Center contact retention			
Axial force – Mating End		18*	N mini
Axial force – Opposite end		6.68**	N mini
Torque		NA	N.cm mini
Recommended torque			
Mating	BMA	0	N.cm
	SMP	0	N.cm
		0	N.cm
Panel nut		60	N.cm
Mating life		100	Cycles mini
Weight		1,6900	g

SPECIFICATION

OTHER CHARACTERISTICS

***BMA : mating end**
****SMP: mating end**