

## BETWEEN SERIES ADAPTERS

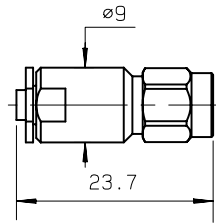


fig. 1

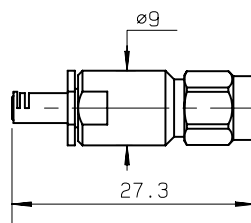


fig. 2

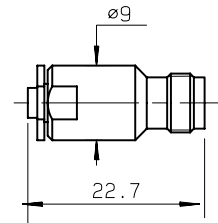


fig. 3

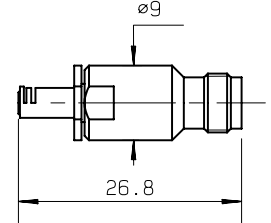


fig. 4

	MMS male	MMS female
SMA male	R191 975 761 (fig. 1)	R191 975 771 (fig. 2)
SMA female	R191 975 781 (fig. 3)	R191 975 791 (fig. 4)

Material and plating : passivated stainless steel.

## IN SERIES ADAPTERS FOR PCB TO PCB LINK

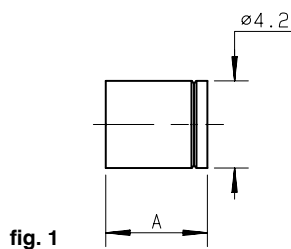


fig. 1

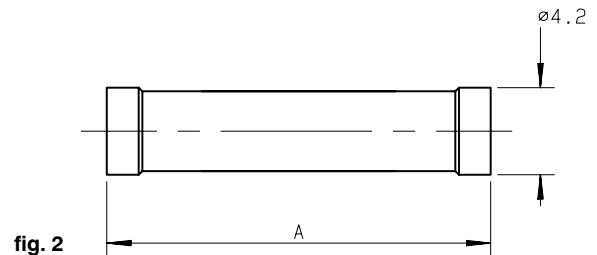
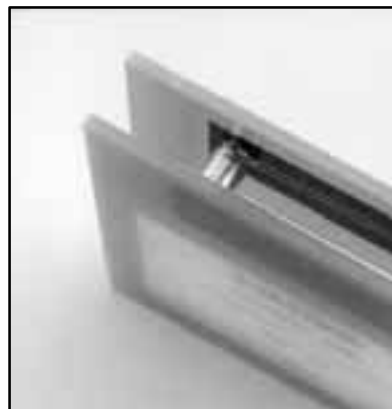


fig. 2

part number	fig.	dimension A	finish	note
R209 307 000	1	4,9	Nickel	packaging 100
R209 703 030●	2	18,5	Nickel	packaging 100

To ease PCB linking, this adapter is designed to remain mated to one designated PCB. Therefore, the slit interface is slide-on, the other is snap-on. This adapter can also be developed upon request with other lengths, in order to adjust space between PCB (minimum distance : 6.4 mm). Please consult us.



- upon request.