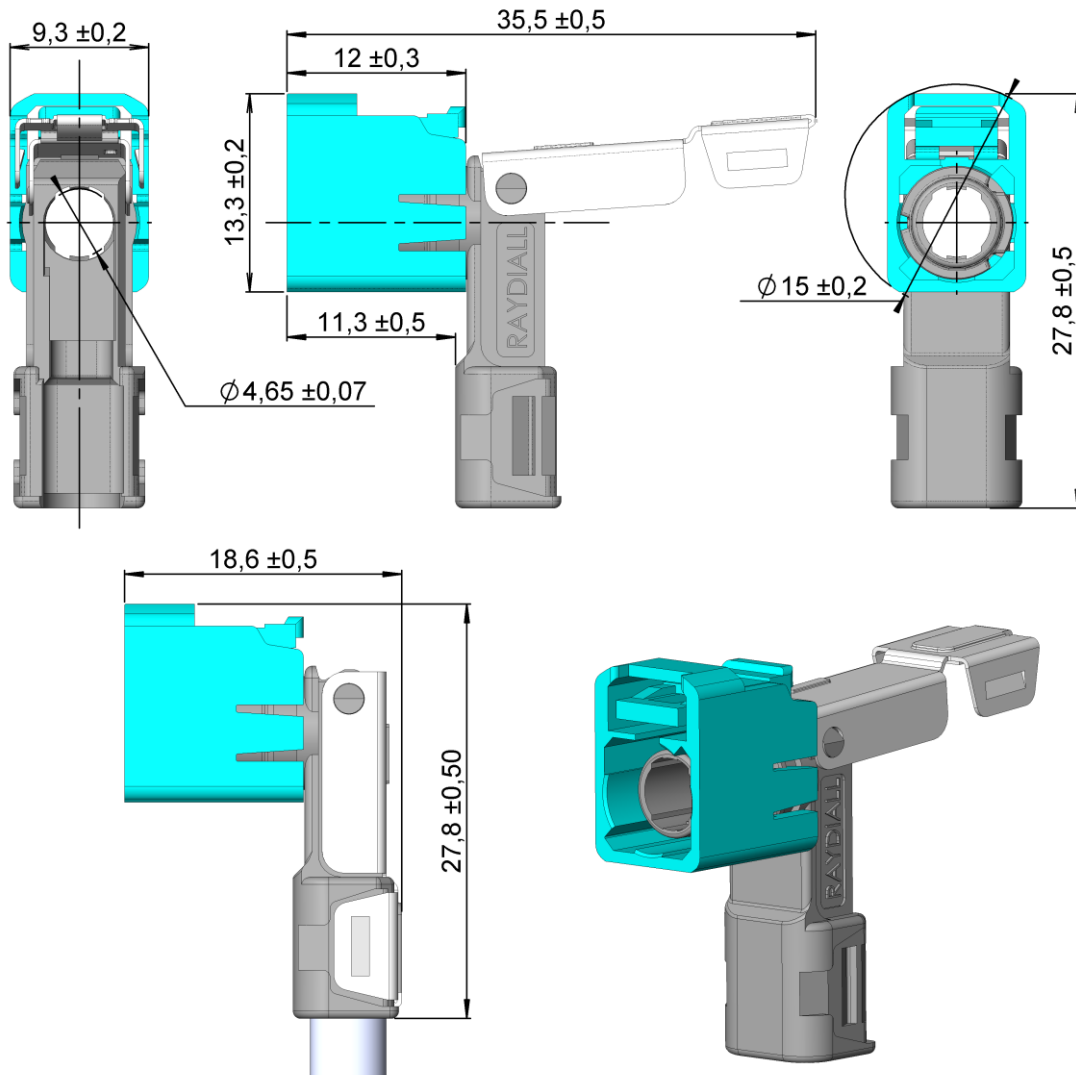


Fakra R3C – Right-Angle housing  
Cable type **RG58** (5/50) & **RG59** (5/75)

R197.125.\_81

TECHNICAL DATA SHEET

| Rev | Date       | Edited     | Approved | Validated | Modification |
|-----|------------|------------|----------|-----------|--------------|
| 1   | 14/12/2018 | C.Chavanne | Y.Gay    | R.Chantre | Creation     |
|     |            |            |          |           |              |



All dimensions are in mm

| COMPONENTS | MATERIALS | UL CLASSIFICATION | COLOR   |
|------------|-----------|-------------------|---|
| Housing    | Polyamide | UL 94 V-2         | See page 2  |
| Cap        | Inox      |                   |   |
| Sleeve     | Die Cast  | Chromatation      | Tint variation may happen depending on moulding shots |

Fakra R3C – Right-Angle housing  
Cable type **RG58** (5/50) & **RG59** (5/75)

R197.125.\_81

TECHNICAL DATA SHEET

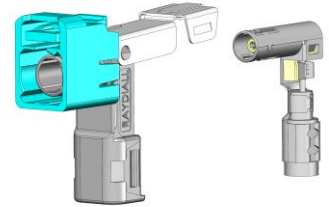
**Interface**

According to

**ISO 20860-1**

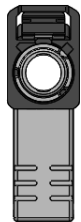
**Application**

This housing is part of an assembly to create a complete R-A R3C connector. It has to be assembled with a terminal.  
Refer to **Assembly Instructions AI\_R-AR3C** to get the corresponding P/N.

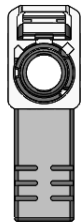


**Codings**

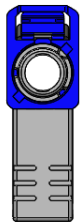
To obtain the complete part number, please fill in the blank “\_” with the coding letter.



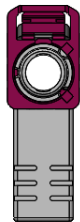
**A**  
Black  
RAL 9005



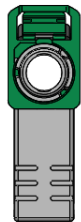
**B**  
Crème White  
RAL 9001



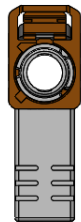
**C**  
Blue  
RAL 5005



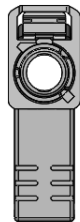
**D**  
Bordeaux  
RAL 4004



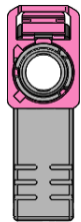
**E**  
Green  
RAL 6002



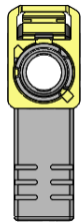
**F**  
Brown  
RAL 8011



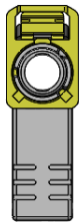
**G**  
Grey  
RAL 7031



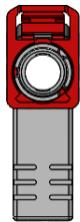
**H**  
Violet  
RAL 4003



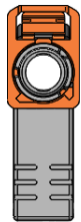
**I**  
Beige  
RAL 1001



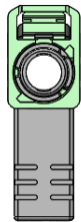
**K**  
Curry  
RAL 1027



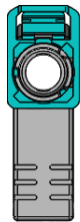
**L**  
Carmin  
RAL 3002



**M**  
Pastel Orange  
RAL 2003



**N**  
Pastel Green  
RAL 6019



**Z**  
Water blue  
RAL 5021

**Net Weight:** 4.93 g

**Storage condition & Shelf Life**

Boxes should be stored indoors, in its original packaging (box + plastic bag), in a controlled climate environment not exceeding -20°C/+40°C and maximum 70% relative humidity. The boxes should be protected from direct sunlight and should be used on a "first-in, first-out" basis.

It is recommended to use this reference within 1 year from the date of manufacture when stored according the recommended storage condition.

**Product Handling**

Care must be taken when handling the boxes of housings. They must not fall. Indeed it might unwillingly lock the cap, which makes the housing un-usable.