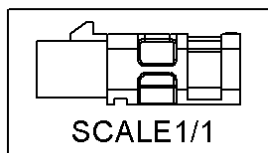
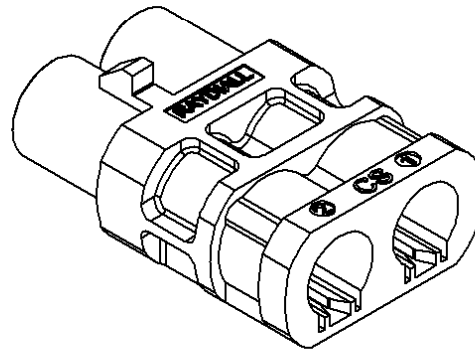
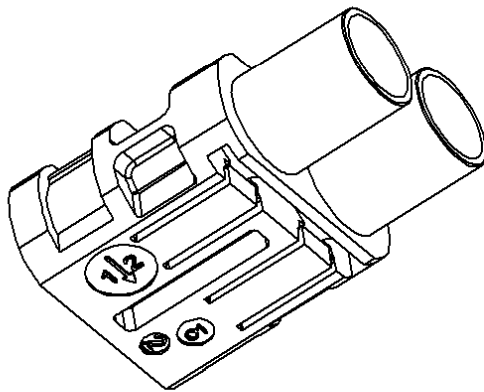
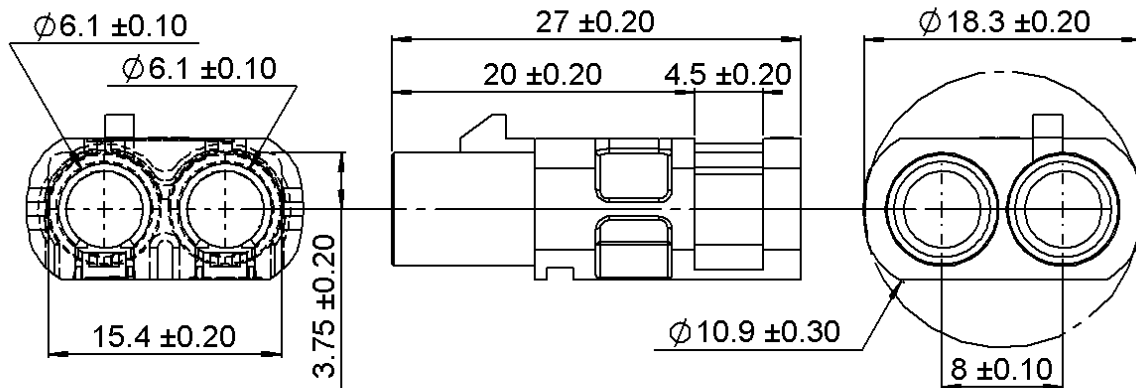


**8MM DUPLEX R3C MALE HOUSING+CRIMP SLEEVE**

**R197.235.\_82**

Series: **SMB CARLOCK**

To obtain th complete P/N please fill in the blank "\_" with the coding letter



**Housing to be used with:**

**R299.197.000 + R299.197.900**  
**R299.197.010 + R299.197.900**

All dimensions are in mm.

COMPONENTS	MATERIALS	PLATING	
		UL CLASSIFICATION	COLOR
HOUSING	PA6.6 GF15 (POLYAMIDE)	UL 94 V-2	(µm)
			See Page2

**PACKAGING**

Standard	Other
3000	Contact us

**MECHANICAL CHARACTERISTICS**

Mating life **100** Cycles mini  
 Weight **1,91** g

**ENVIRONMENTAL**

Operating temperature **-40/+110 °C**

Issue : 1609 A

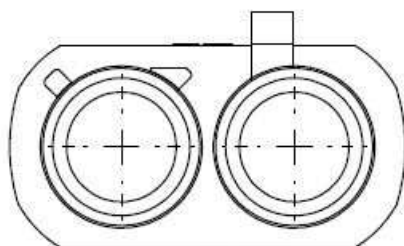
In the effort to improve our products, we reserve the right to make changes judged to be necessary.



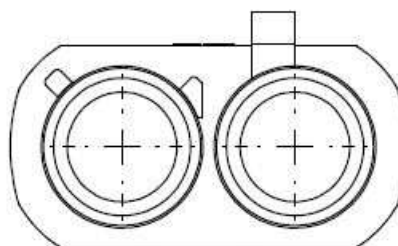
8MM DUPLEX R3C MALE HOUSING+CRIMP SLEEVE

**R197.235.\_82**

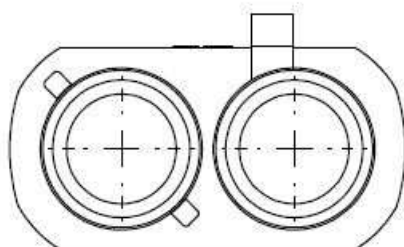
Series: **SMB CARLOCK**



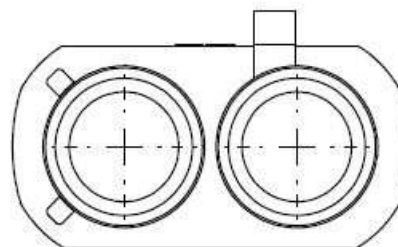
CODING A  
COLOR BLACK  
RAL9005



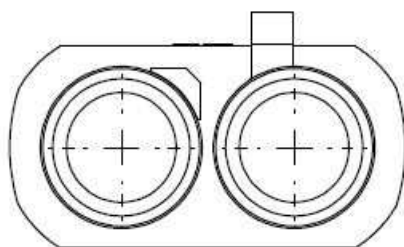
CODING B  
COLOR WHITE  
RAL9001



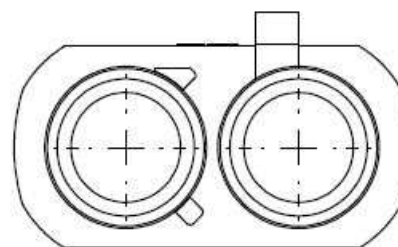
CODING C  
COLOR BLUE  
RAL5005



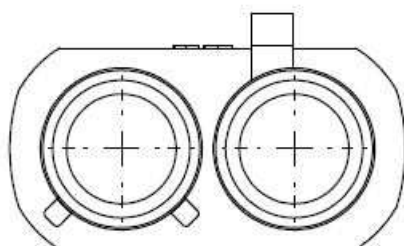
CODING D  
COLOR VIOLET  
RAL4004



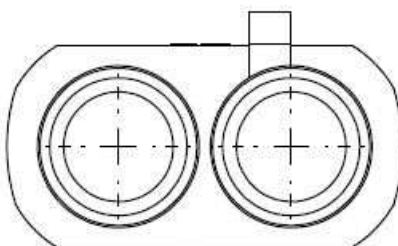
CODING E  
COLOR GREEN  
RAL6002



CODING F  
COLOR BROWN  
RAL8011



CODING K  
COLOR CURRY  
RAL1027



CODING Z  
COLOR WHITE  
RAL5021

**-For other Coding, please contact us**

**-To obtain the complete P/N please fill in the blank " \_ " with the coding letter**

Issue : 1609 A

In the effort to improve our products, we reserve the right to make changes judged to be necessary.

8MM DUPLEX R3C MALE HOUSING+CRIMP SLEEVE

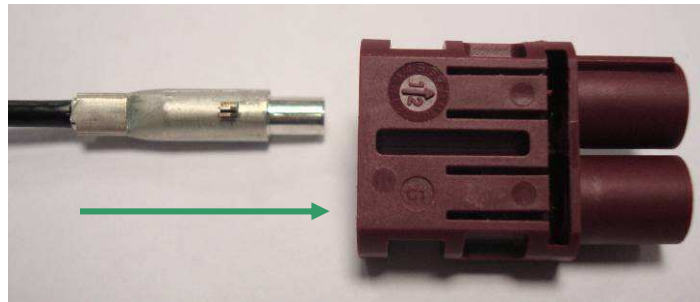
**R197.235.\_82**

Series: SMB CARLOCK

## RECOMMENDED MOUNTING PROCEDURE

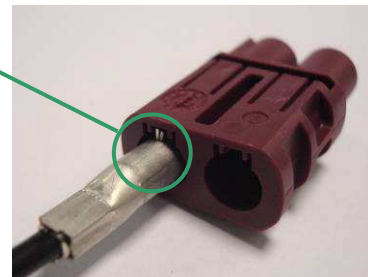
1

● **Pre-insertion of the coax into the housing**



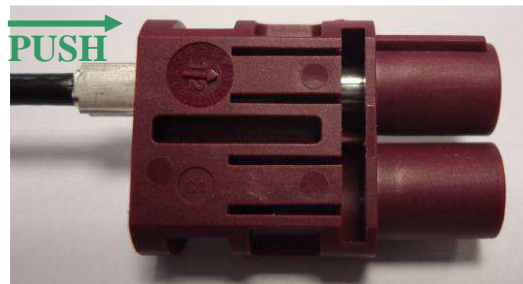
● **Orientation of the tab of the coax with the slot of the housing.**

Orientation of the slot



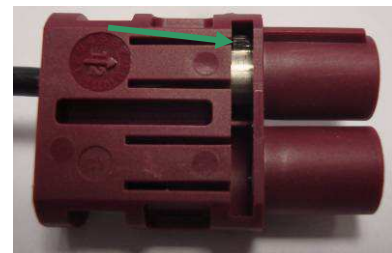
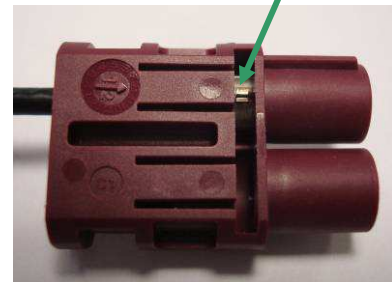
2

● **Push the connector into the housing until it clip on.**



● **Rotate the coax 180° into the housing to insure the positioning**

● **Repeat the operation 1 and 2 to insert the coax into the second way.**



Issue : 1609 A

In the effort to improve our products, we reserve the right to make changes judged to be necessary.