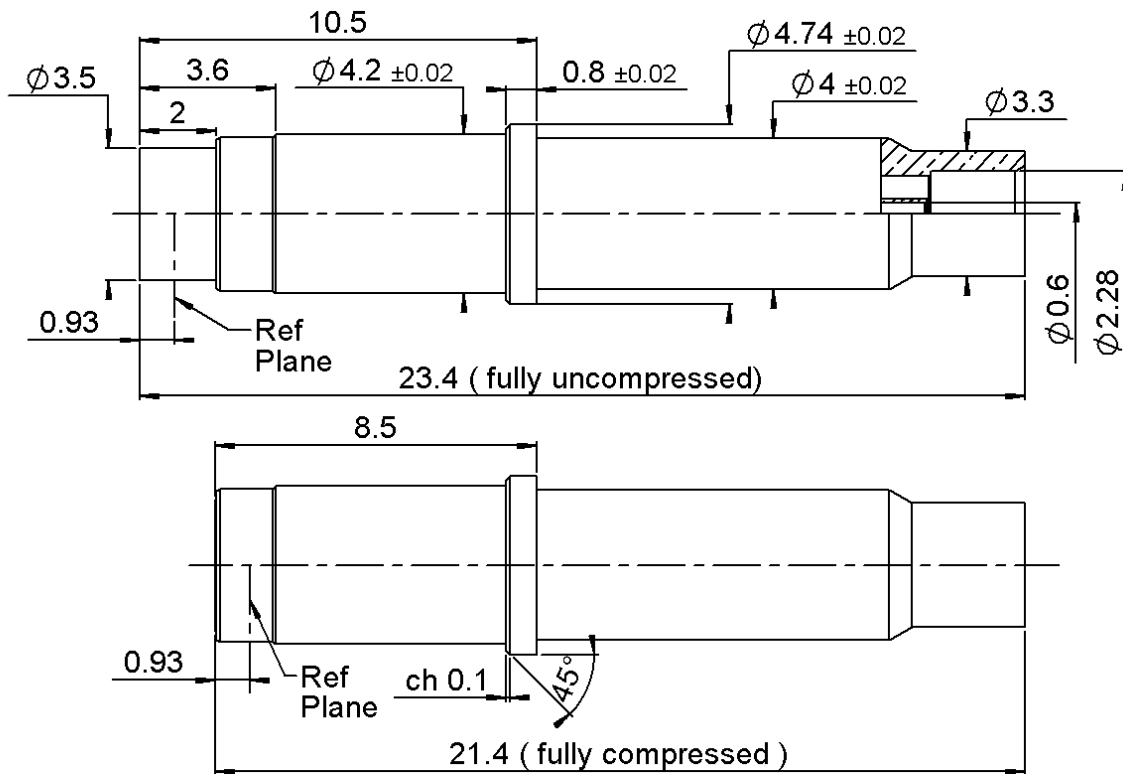
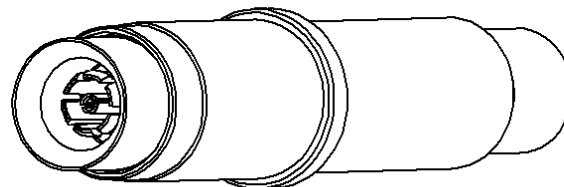
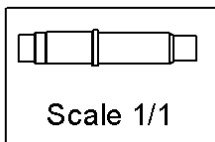


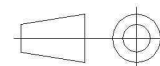
PAGE 1/3	ISSUE 1447C	SERIES MCC #12	PART NUMBER R199012214
----------	-------------	----------------	------------------------



- 1 - Pre-load : Uncompressed  
Overall length : L 23.4  
Pre-load = 9 N mini
- 2 - Maximum Compression = 2mm  
Overall length : L 21.4  
Pre-load = 14 N maxi



All dimensions are in mm.



COMPONENTS	MATERIALS	PLATING (µm)
Body	<b>BERYLLIUM COPPER</b>	<b>GOLD 0.5 OVER NICKEL 2</b>
Center contact	<b>BERYLLIUM COPPER</b>	<b>GOLD 1.3 OVER NICKEL2</b>
Outer contact	<b>BERYLLIUM COPPER</b>	<b>GOLD 1.3 OVER NICKEL2</b>
Insulator	<b>PEEK</b>	
Gasket	-	
Others parts	<b>BRASS</b>	<b>N2PGR</b>
-	-	-
-	-	-

PAGE <b>2/3</b>	ISSUE <b>1447C</b>	SERIES <b>MCC #12</b>	PART NUMBER <b>R199012214</b>
-----------------	--------------------	-----------------------	-------------------------------

### PACKAGING

Standard	Unit	Other
<b>100</b>	<b>Contact us</b>	<b>Contact us</b>

### ELECTRICAL CHARACTERISTICS

Impedance	<b>50</b>	$\Omega$
Frequency	<b>0-18</b>	GHz
VSWR	<b>1.1 + 0,0050</b>	x F(GHz) Maxi
Insertion loss	<b>0.1</b>	$\sqrt{F}$ (GHz) dB Maxi
RF leakage	- ( <b>*80</b> )	- F(GHz)) dB Maxi
Voltage rating	<b>335</b>	Veff Maxi
Dielectric withstanding voltage	<b>1000</b>	Veff mini
Insulation resistance	<b>5000</b>	M $\Omega$ mini

### MECHANICAL CHARACTERISTICS

Center contact retention		
Axial force – Mating End	<b>6.7</b>	N mini
Axial force – Opposite end	<b>6.7</b>	N mini
Torque	<b>NA</b>	N.cm mini
Recommended torque		
Mating	<b>NA</b>	N.cm
Panel nut	<b>NA</b>	N.cm
Clamp nut	<b>NA</b>	N.cm
A/F clamp nut	<b>0,0000</b>	mm
Mating life	<b>500</b>	Cycles mini
Weight	<b>1,6000</b>	g

### ENVIRONMENTAL

Operating temperature	<b>-55/+125</b>	$^{\circ}\text{C}$
Hermetic seal	<b>NA</b>	Atm.cm3/s
Panel leakage	<b>NA</b>	

### SPECIFICATION

### CABLE ASSEMBLY

Stripping	a	b	c	d	e	f
mm	<b>1,78</b>	<b>0</b>	<b>0</b>	<b>0</b>	<b>0</b>	<b>0</b>

Assembly instruction:

**We recommend a cable thermal preconditioning before assembly.**

Recommended cable(s)

**RG 405**  
**.086**

Characteristics indicated on this data sheet are those that can be achieved with the highest performance cable. Intrinsic limitations of the cable may diminish the performance of the assembly

Cable retention

- pull off	<b>136</b>	N mini
- torque		N.cm

### TOOLING

Part Number	Description	Hexagon
R282051000	STRIPPING TOOL	
R282062000	POINTER GAUGE	
R282740020	SOLDERING MOUNTING	
R282740050		

### OTHER CHARACTERISTICS

**\*DC-3 GHz**  
**3 GHz to 26 GHz : -65 dB**