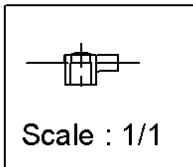
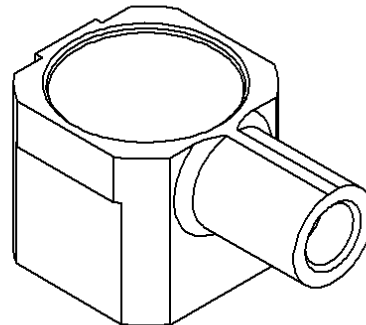
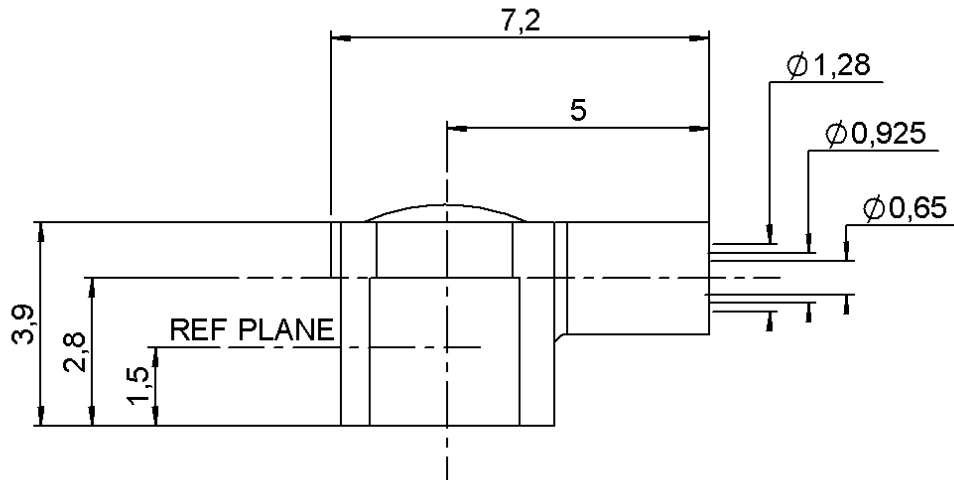


RIGHT ANGLE PLUG CRIMP TYPE

R209.351.020

CABLE 1/50 S-BR + 1/75 S-BR

Series : MMS



All dimensions are in mm.



| COMPONENTS | MATERIALS | PLATING (µm) |
|----------------|------------|--------------|
| BODY | ZINC ALLOY | NICKEL 2 |
| CENTER CONTACT | BRASS | NICKEL 2 |
| OUTER CONTACT | - | - |
| INSULATOR | PTFE | - |
| GASKET | - | - |
| OTHERS PARTS | - | - |
| - | - | - |
| - | - | - |

Issue : 0704 F

In the effort to improve our products, we reserve the right to make changes judged to be necessary.



RIGHT ANGLE PLUG CRIMP TYPE

R209.351.020

CABLE 1/50 S-BR + 1/75 S-BR

Series : MMS

PACKAGING

| Standard | Unit | Other |
|-------------|-------------------|-------------------|
| 1000 | 'W' option | Contact us |

SPECIFICATION

ELECTRICAL CHARACTERISTICS

| | | |
|---------------------------------|-----|-----------------------------|
| Impedance | | 50 Ω |
| Frequency | | 0-6 GHz |
| VSWR | * + | 0,0000 x F(GHz) Maxi |
| Insertion loss | | 0.2 √F(GHz) dB Maxi |
| RF leakage | - (| NA - F(GHz)) dB Maxi |
| Voltage rating | | 50 Veff Maxi |
| Dielectric withstanding voltage | | 250 Veff mini |
| Insulation resistance | | 500 MΩ mini |

CABLE ASSEMBLY

| Stripping | a | b | c | d | e | f |
|-----------|------|------|------|------|------|------|
| mm | 2,10 | 1,90 | 0,00 | 0,00 | 3,10 | 0,00 |

Assembly instruction :

Recommended cable(s)
50 VMTX
75 VMTX

Characteristics indicated on this data sheet are those that can be achieved with the highest performance cable. Intrinsic limitations of the cable may diminish the performance of the assembly

Cable retention

- pull off **15** N mini
- torque **NA** N.cm

MECHANICAL CHARACTERISTICS

| | | |
|----------------------------|-----------|-----------|
| Center contact retention | | |
| Axial force – Mating end | 8 | N mini |
| Axial force – Opposite end | 8 | N mini |
| Torque | NA | N.cm mini |

TOOLING

| Part Number | Description | Hexagon |
|-------------|-------------|---------|
| . | . | . |

| | | |
|--------------------|---------------|------|
| Recommended torque | | |
| Mating | NA | N.cm |
| Panel nut | NA | N.cm |
| Clamp nut | NA | N.cm |
| A/F clamp nut | 0,0000 | mm |

OTHER CHARACTERISTICS

*50 Ohms:1.2 à 2GHz, 75 Ohms:1.14 à 1Ghz

| | | |
|-------------|---------------|-------------|
| Mating life | 50 | Cycles mini |
| Weight | 0,2850 | g |

ENVIRONMENTAL

| | | |
|-----------------------|----------------|-----------|
| Operating temperature | -40/+90 | ° C |
| Hermetic seal | NA | Atm.cm3/s |
| Panel leakage | NA | |

Issue : 0704 F

In the effort to improve our products, we reserve the right to make changes judged to be necessary.

