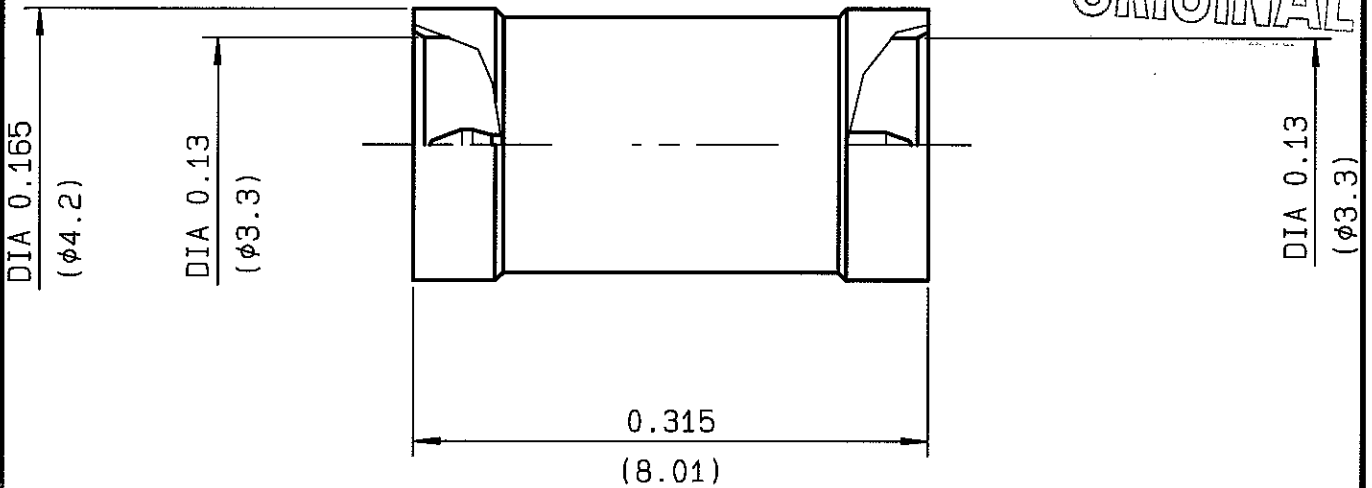


**MALE-MALE ADAPTOR GAP BETWEEN PCB CARDS**  
**9.55MM. PACK. 100**

**R209.703.070**  
**SERIES MMS**

**ORIGINAL**



NOMINAL IMPEDANCE	<b>50</b> Ω	CABLES :	
FREQUENCY RANGE	<b>0-2</b> GHz		
TEMPERATURE RATING	<b>-40/+90</b> °C		
V.S.W.R	<b>1.2 +</b> x F(GHz)Maxi		
RF INSERTION LOSS	<b>0.07</b> √F(GHz) dB Maxi		
VOLTAGE RATING	<b>50</b> Veff Maxi		
DIELECTRIC WITHSTANDING VOLTAGE	<b>250</b> Veff Mini		
INSULATION RESISTANCE	<b>500</b> MΩMini	OTHERS CHARACTERISTICS	
HERMETIC SEAL	<b>NA</b> Atm.cm <sup>3</sup> /s	CABLE RETENTION	<b>NA</b> N Mini
LEAKAGE (pressurized only)	<b>NA</b>	CENTER CONTACT RETENTION	
MECHANICAL DURABILITY	<b>50</b> Cycles	Axial force - mating end	<b>10</b> N Mini
WEIGHT	gr	Axial force - opposite end	<b>10</b> N Mini
SPECIFICATION		Torque	<b>NA</b> cm.N Mini
		RECOMMENDED TORQUES	
		Mating	<b>NA</b> cm.N
		Panel nut	<b>NA</b> cm.N
		Clamp nut	<b>NA</b> cm.N

CONNECTOR PARTS	MATERIALS	FINISH	(all values are given in micrometers)
BODY	BRASS	NICKEL 2	
OUTER CONTACT			
CENTER CONTACT	BRASS	NICKEL 2	
INSULATOR	PTFE	-	
GASKET		-	
OTHERS PIECES			

ISSUE	CREATION DATE	FILE PART-NUMBER
<b>0002A00</b>	<b>16/09/1999</b>	<b>99-0400-215</b>



**RADIALL®**

The information given here is subject to change without notice.  
 Design changes may be in order to improve the product.

*Connect to the future*

MASTHERND