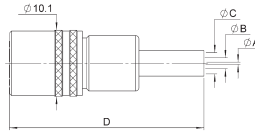


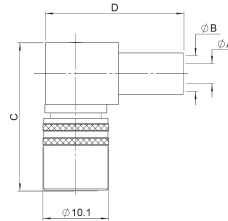
# SOCKETS AND RECEPTACLES - STANDARD DENSITY

## STRAIGHT SOCKETS CRIMP TYPE FOR FLEXIBLE CABLES



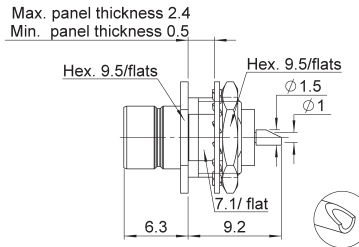
Cable group	Cable group dia.	BT Reference	Part number	Dimensions				Packaging
				A	B	C	D	
RG179	2.6/75/S	S 43/4 FS	<b>R214 083 902</b>	0.38	1.73	3.25	3.2	20 pieces
BT3002	3.6/75/D	S 43/5 FS	<b>R214 083 922</b>	0.36		4.47		

## RIGHT ANGLE SOCKETS CRIMP TYPE FOR FLEXIBLE CABLE



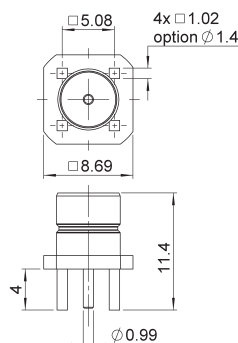
Cable group	Cable group dia.	BT Reference	Part number	Dimensions				Packaging
				A	B	C	D	
RG179	2.6/75/S	S 43/4 C	<b>R214 182 902</b>	1.73	3.25	25	23	20 pieces

## STRAIGHT BULKHEAD RECEPTACLE WITH SOLDER POT



Part number	Panel drilling	Packaging
R214 553 000	P02	unit

## STRAIGHT PCB PLUG RECEPTACLES



BT Reference	Part number	Panel drilling	Packaging
P 43/1 D	R214 426 704	P01	100 pieces