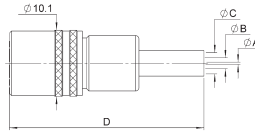


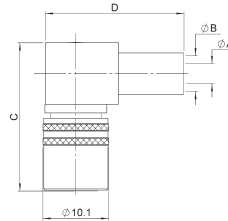
SOCKETS AND RECEPTACLES - STANDARD DENSITY

STRAIGHT SOCKETS CRIMP TYPE FOR FLEXIBLE CABLES



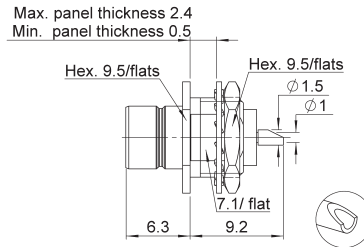
Cable group	Cable group dia.	BT Reference	Part number	Dimensions				Packaging
				A	B	C	D	
RG179	2.6/75/S	S 43/4 FS	R214 083 902	0.38	1.73	3.25	3.2	20 pieces
BT3002	3.6/75/D	S 43/5 FS	R214 083 922	0.36		4.47		

RIGHT ANGLE SOCKETS CRIMP TYPE FOR FLEXIBLE CABLE



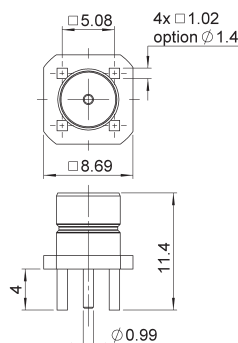
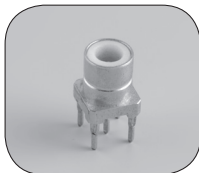
Cable group	Cable group dia.	BT Reference	Part number	Dimensions				Packaging
				A	B	C	D	
RG179	2.6/75/S	S 43/4 C	R214 182 902	1.73	3.25	25	23	20 pieces

STRAIGHT BULKHEAD RECEPTACLE WITH SOLDER POT



Part number	Panel drilling	Packaging
R214 553 000	P02	unit

STRAIGHT PCB PLUG RECEPTACLES



BT Reference	Part number	Panel drilling	Packaging
P 43/1 D	R214 426 704	P01	100 pieces