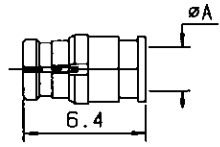


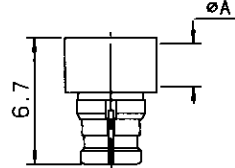


STRAIGHT CONNECTOR SOLDER TYPE FOR SEMI RIGID CABLES (with female center contact)



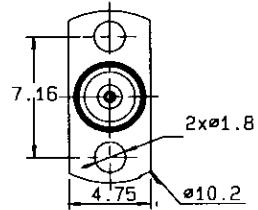
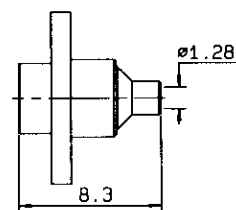
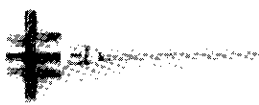
Cable group	Part number	Imp.	A	Captive center contact	Finish
.047"	R222 051 000	50	1.28		
.085"	R222 052 000	50	2.28	no	gold

RIGHT ANGLE CONNECTOR SOLDER TYPE FOR SEMI RIGID CABLES (with female center contact)



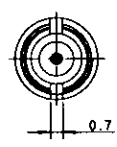
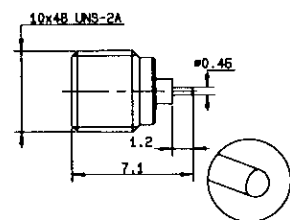
Cable group	Part number	Imp.	A	Captive center contact	Finish
.047"	R222 151 000	50	1.28	yes	gold
.085"	R222 152 000	50	2.28		

TWO HOLE FLANGE CONNECTOR SOLDER TYPE FOR SEMI RIGID CABLES (with male center contact)



Cable group	Part number	Imp.	Captive center contact	Finish	Note
.047"	R222 251 000	50	no	passivated + gold	full detent

THREAD-IN RECEPTACLE (with male center contact)



Part number	Imp.	Captive center contact	Finish	Note
R222 561 001	50	yes	passivated	full detent
R222 561 301	50	yes	passivated	limited detent