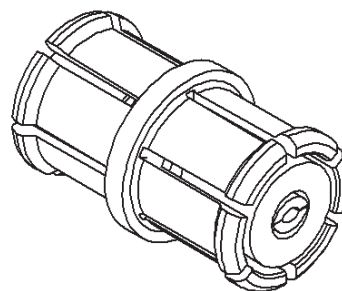
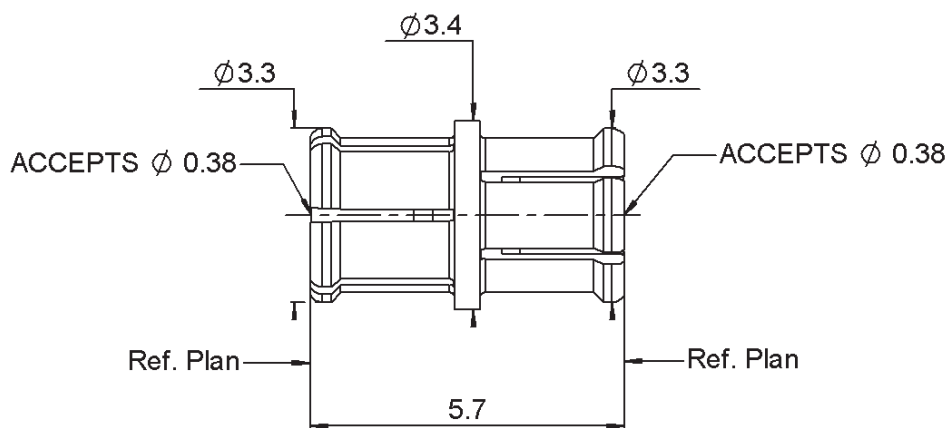
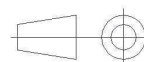


PAGE 1/3	ISSUE 1334B	SERIES SMP	PART NUMBER R222705200
----------	-------------	------------	------------------------




SCALE 1/1

All dimensions are in mm.



COMPONENTS	MATERIALS	PLATING (μm)
Body	BERYLLIUM COPPER	GOLD OVER NICKEL
Center contact	BERYLLIUM COPPER	GOLD OVER NICKEL
Outer contact		
Insulator	PTFE	
Gasket		
Others parts		
-	-	-
-	-	-

PAGE 2/3	ISSUE 1334B	SERIES SMP	PART NUMBER R222705200
----------	-------------	------------	------------------------

PACKAGING

Standard	Unit	Other
100	Contact us	Contact us

ELECTRICAL CHARACTERISTICS

Impedance		50	Ω
Frequency		0-40	GHz
VSWR	1.5	+	0.0000 x F(GHz) Maxi
Insertion loss			0.12 \sqrt{F} (GHz) dB Maxi
RF leakage	- (NA - F(GHz) dB Maxi
Voltage rating			335 Veff Maxi
Dielectric withstanding voltage			500 Veff mini
Insulation resistance			5000 M Ω mini

MECHANICAL CHARACTERISTICS

Center contact retention			
Axial force – Mating End		6.7	N mini
Axial force – Opposite end		6.7	N mini
Torque		NA	N.cm mini
Recommended torque			
Mating		NA	N.cm
Panel nut		NA	N.cm
Mating life		100	Cycles mini
Weight		0.1550	g

ENVIRONMENTAL

Operating temperature	-65/+165	$^{\circ}\text{C}$
Hermetic seal	NA	Atm.cm3/s
Panel leakage	NA	

SPECIFICATION

OTHER CHARACTERISTICS

Assembly instruction:

Others:
Compliant with MIL-STD-348