

# PCB RECEPTACLES

## EDGE CARD PCB RECEPTACLES (female center contact)

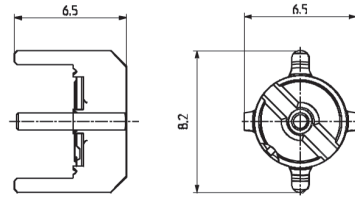
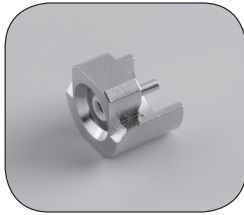


Fig. 1

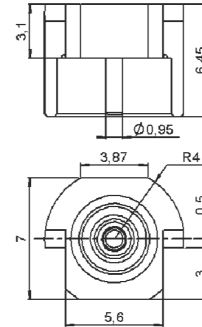


Fig. 2

Part number	Fig.	Captive center contact	Packaging	Note
R223 423 000	1	yes	bulk 100 pieces	SMT edge card
R223 423 010	2			

## STRAIGHT PCB RECEPTACLES (female center contact)

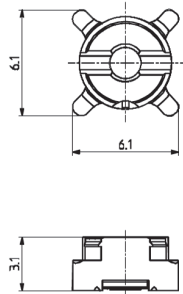
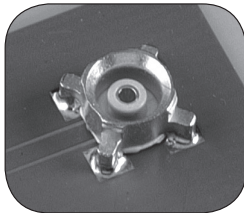


Fig. 1

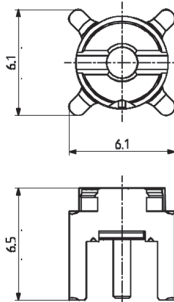


Fig. 2

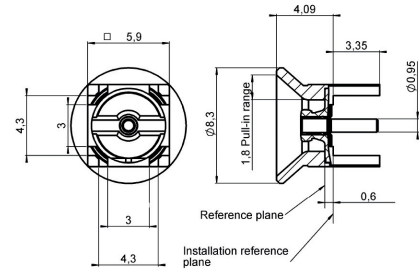
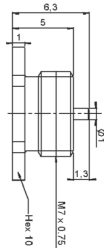
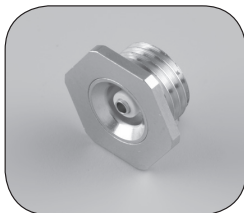


Fig. 3

Part number	Fig.	Captive center contact	PCB	Assembly instructions	Packaging	Note
R223 424 000	1	yes		M01	bulk 100 pieces	SMT
R223 424 800	1				tape & reel 720 pieces	
R223 425 000	2			P01	bulk 100 pieces	
R223 425 110	3		P01	bulk 100 pieces		

## SCREW-ON RECEPTACLE (female center contact)



Part number	Captive center contact	Panel drilling
R223 555 000	yes	P03

To download data sheets and assembly instructions, visit [www.radiall.com](http://www.radiall.com) & enter the part number in the Search box. **Bold** part numbers represent products typically in stock & available for immediate shipment. See page 8 and 9 for packaging information.