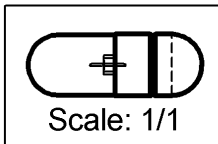
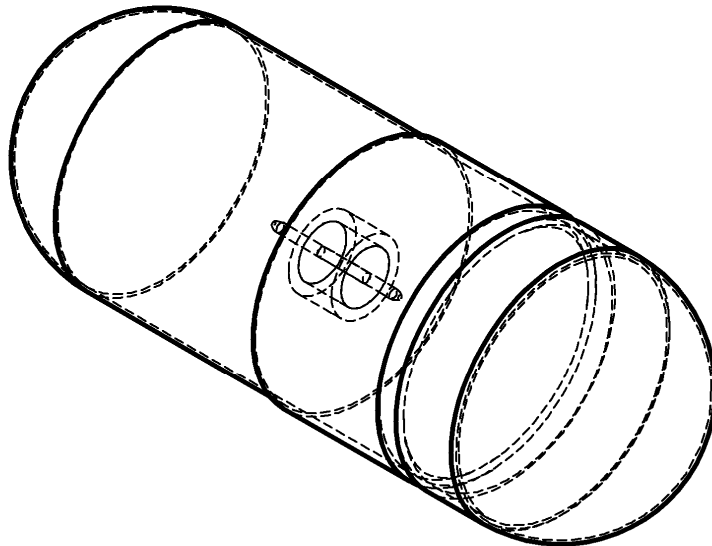
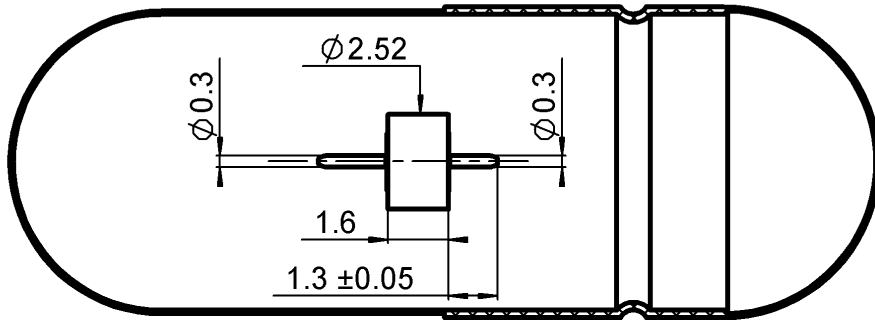


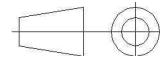
**GLASS BEAD
PACKAGING 100**

R280.751.080

Series : ACC-COAX



All dimensions are in mm.



COMPONENTS	MATERIALS	PLATING (μm)
BODY	FERRO-NICKEL	GOLD 1.3 OVER NICKEL 2
CENTER CONTACT	FERRO-NICKEL	GOLD 1.3 OVER NICKEL 2
OUTER CONTACT	-	-
INSULATOR	-	-
GASKET	-	-
OTHERS PARTS	-	-

Operating temperature : $-65/+200$ °C

Weight : 0,1100 g

Others characteristics :

Issue : 0839 A

In the effort to improve our products, we reserve the right to make changes judged to be necessary.



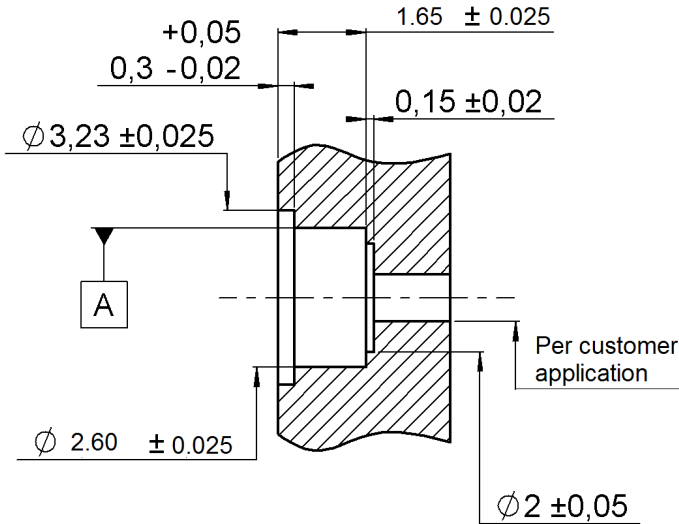
**GLASS BEAD
PACKAGING 100**

R280.751.080

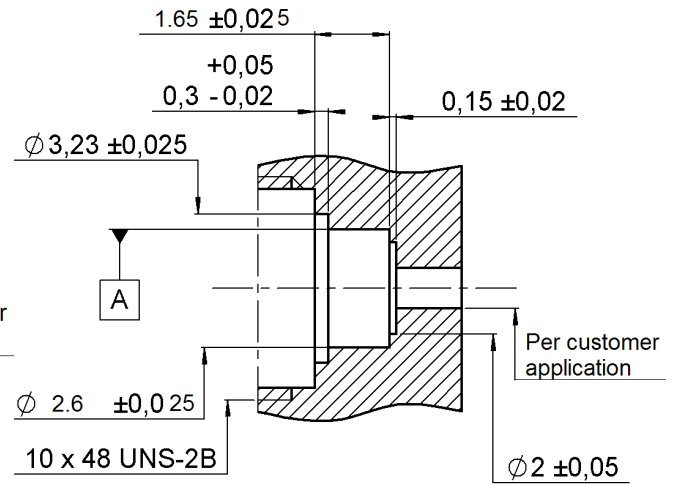
Series : ACC-COAX

MOUNTING INSTRUCTIONS

FLANGE

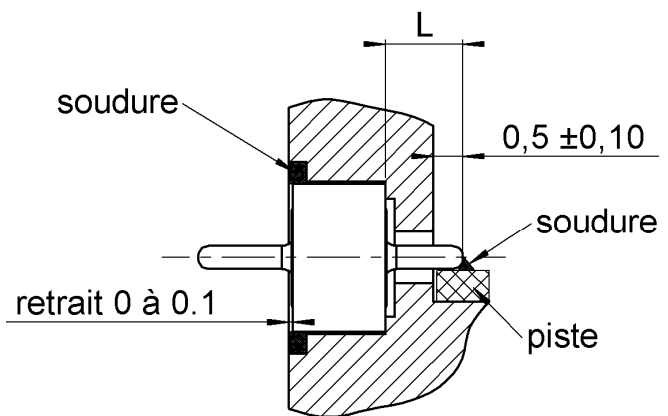


RECEPTACLE SCREW



ASSEMBLY

Introduce the glass bead into its housing.
Weld the ring by putting a welding ring in the groove.
Weld the glass bead pin on the track.
(Beware there is not too much welding).
(For maximum RF characteristics the link track/pin must be as thin as possible. We advise therefore to follow the A dimension rigorously, by welding accurately the glass bead pin on the track).



$L=1.3\pm/-0.05$