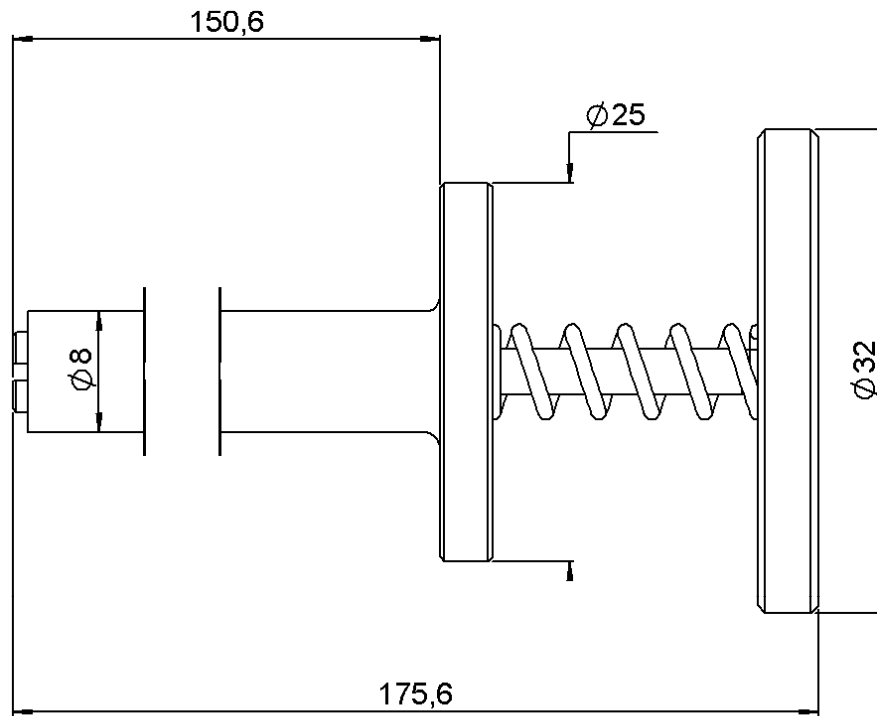
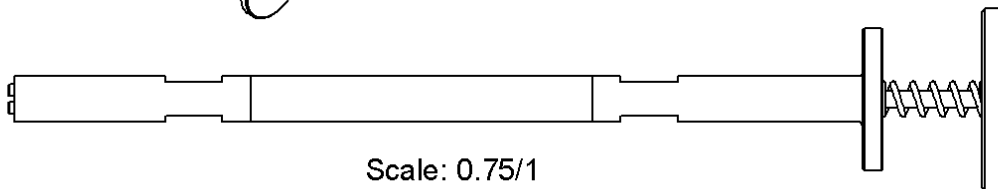
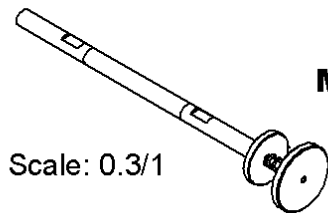


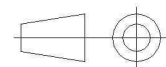
PAGE 1/2	ISSUE 1439A	SERIES OUT	PART NUMBER R282918120
----------	-------------	------------	------------------------



**MATERIAL: STAINLESS STEEL PASSIVATED**

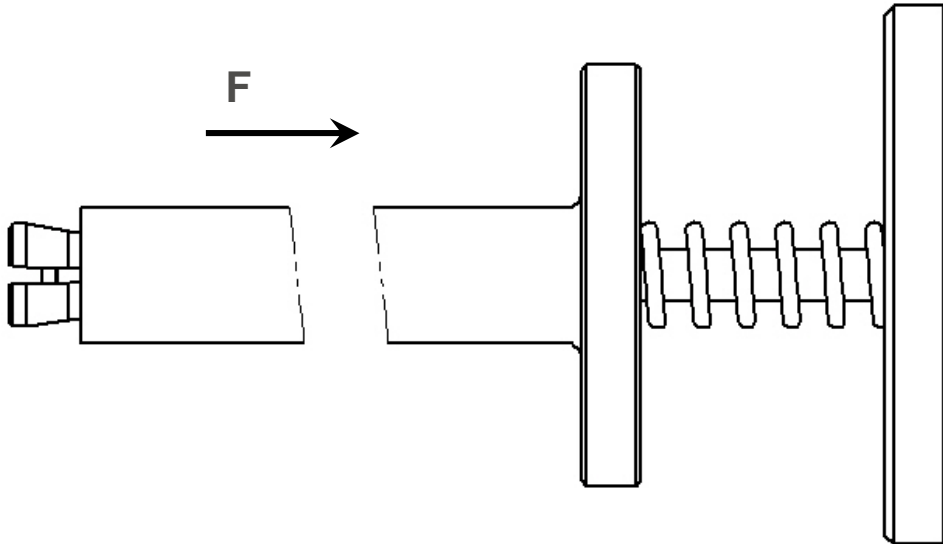


All dimensions are in mm.

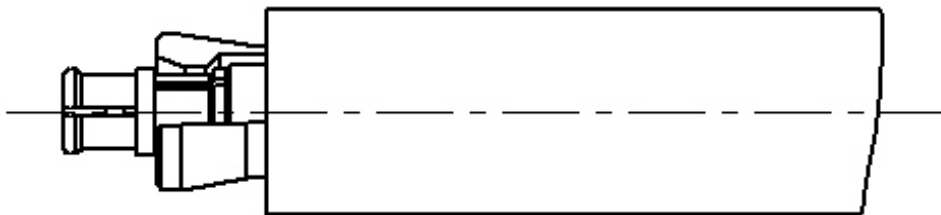


PAGE 2/2	ISSUE 1439A	SERIES OUT	PART NUMBER R282918120
----------	-------------	------------	------------------------

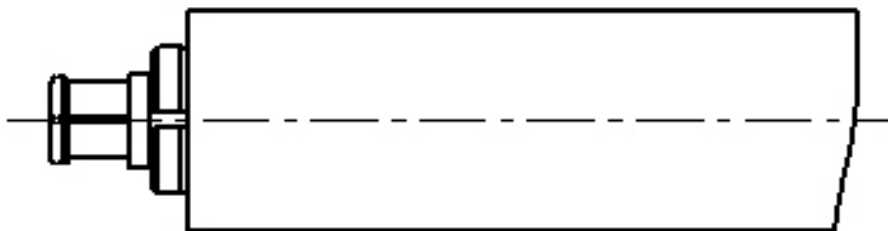
**-1- Push in F direction to open the tool.**



**-2- Place the adaptor into the tool until it bottoms against.**



**-3- Push on the adaptor, and release the smallest tool diameter. (the force to fixe the adaptor is applied by a spring).**



**-Push on the biggest tool diameter to place the adaptor.**  
**-To remove the adaptator, pull off on the biggest tool diameter.**