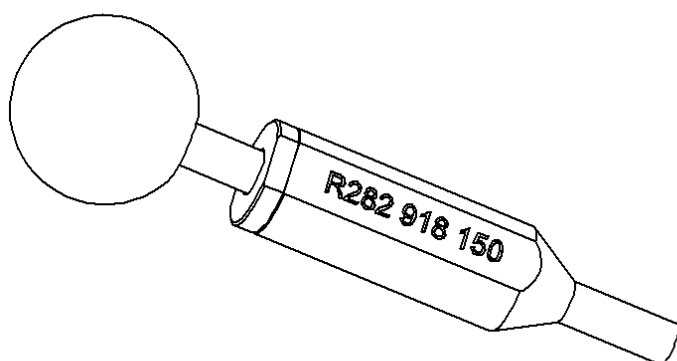
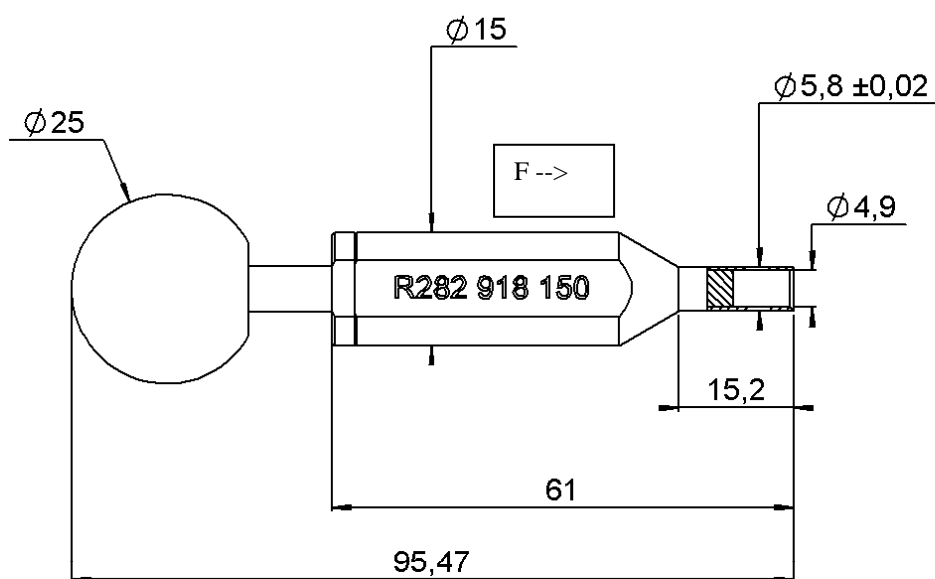


## SMP DISENGAGEMENT TOOL

**R282.918.150**

Series : OUT



Vue ech 1

**INSTRUCTION FOR USING :**

1. Insert the tool into the connector
2. Make sure that the front side of the tool is flush inserted in the connector
3. Maintain with pressure in F direction the tool handle by the body and push by the ball side into the panel
4. The connector is disengage

**Issue : 1321 A**

In the effort to improve our products, we reserve the right to make changes judged to be necessary.

