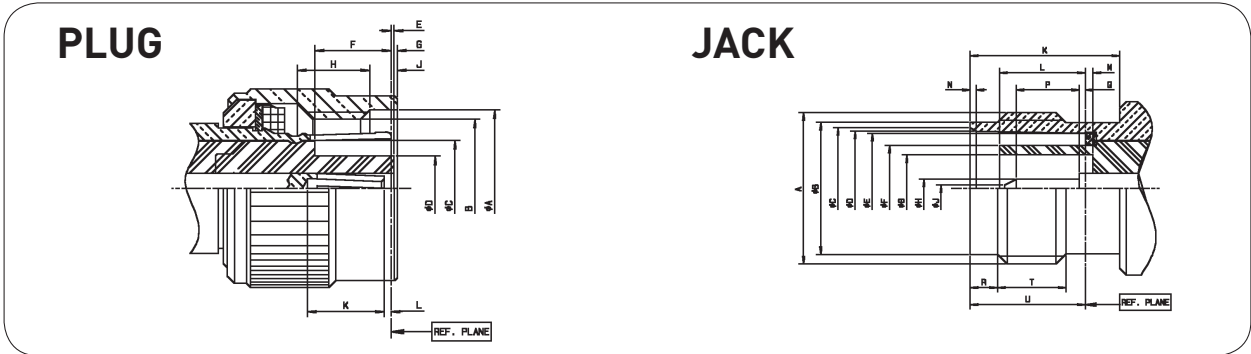


**INTERFACE**

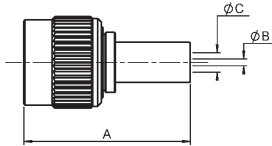


Letter	mm		inch	
	min.	max.	min.	max.
A DIA	11.18		.440	
B		7/16-28	UNEF-2B	
C DIA	7		.275	
D DIA		4.72		.186
E	0.03	0.53	.001	.020
F	5.28	5.79	.208	.228
G		1.98		.078
H	3.96		.156	
J	1.60		.063	
K	4.95		.195	
L	0.61	1.12	.024	.044

Letter	mm		inch	
	min.	max.	min.	max.
A		7/16-28	UNEF-2A	
B DIA	9.60	9.68	.378	.381
C DIA	8.79	9.04	.346	.356
D DIA	8.31	8.46	.327	.333
E DIA	8.10	8.15	.319	.321
F DIA	-	6.40		.252
G DIA	4.83		.190	
H DIA	1.32	1.37	.052	.054
J DIA		0.64		.025
K	10.52		.414	
L	4.78	5.28	.188	.208
M	0.53	1.04	.021	.041
N	0.38	0.76	.015	.030
P	1.98		.078	
Q	0	0.25	0	.010
R	1.73	2.24	.068	.088
T	4.75		.187	
U	8.31	8.51	.327	.335

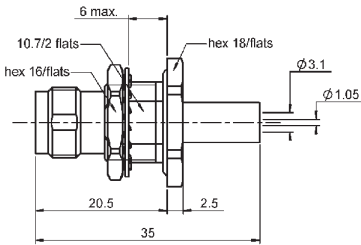
**PLUG AND JACK**

**STRAIGHT PLUG CRIMP TYPE FOR FLEXIBLE CABLES** (female center contact)



Cable group	Cable group dia.	Part number	Dimensions			Captive center contact	Finish	Packaging
			A	B	C			
Belden 9913	10.2/50/S	R300 143 050	28.2	2.85	7.8	yes	nickel	100 pieces/bulk

**STRAIGHT BULKHEAD JACK FULL CRIMP TYPE FOR FLEXIBLE CABLES** (male center contact)



Cable group	Cable group dia.	Part number	Captive center contact	Panel drilling	Finish	Packaging	Note
RG58/RG141	5/50/S	R300 143 240	yes	P04	nickel	100 pieces/bulk	panel seal