

# 1000BASE-T TRANSFORMER MODULES

Industrial grade



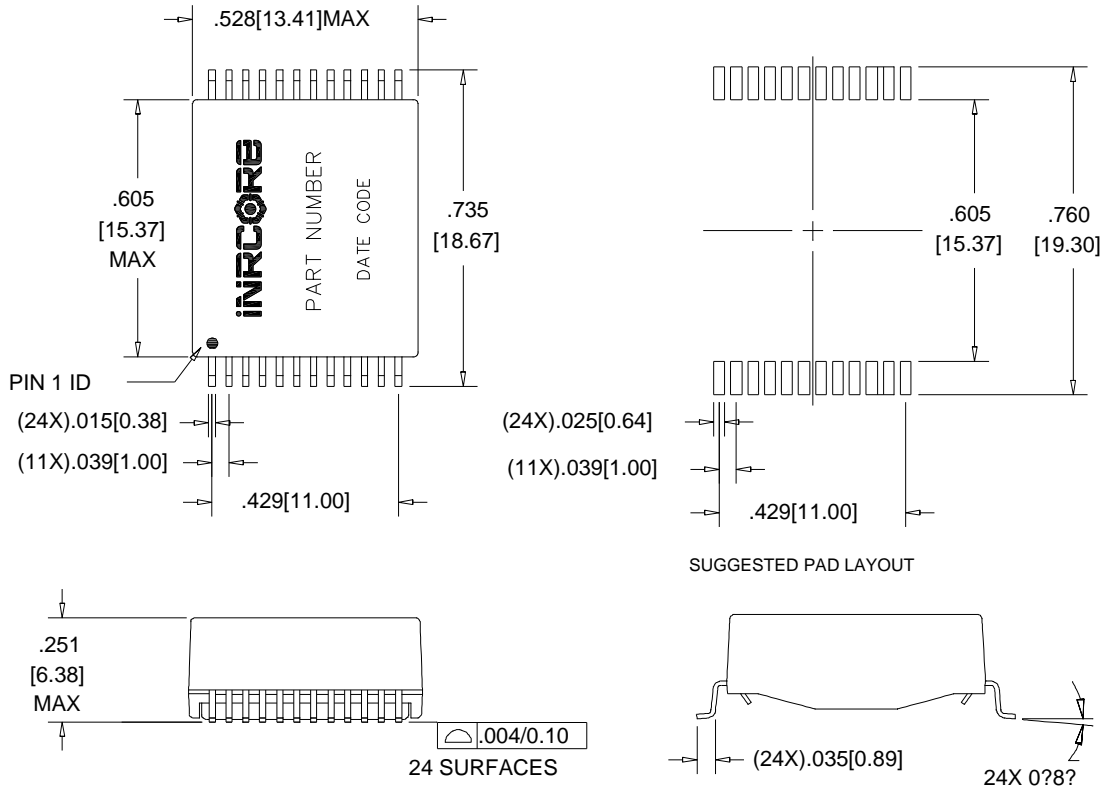
- Compliant with IEEE 802.3 standards
- 350µH OCL with 8mA DC bias at 100KHz 100mV
- Lead finish: Pure tin
- Moisture Sensitivity Level: 1

Electrical Specifications @ 25 °C – Operating Temperature – 40 °C to +85 °C													
Part Number	Insertion Loss (dB MAX)	Return Loss (dB MIN)					Crosstalk (dB MIN)			Differential to Common Mode Rejection Ratio (dB MIN)			Dielectric Withstanding Voltage @60s (Vrms MIN)
	0.1-100 MHz	1-30 MHz	50 MHz	60 MHz	80 MHz	1.0 MHz	30 MHz	60 MHz	1.0 MHz	30 MHz	60 MHz	100 MHz	
R3./ONL	-1.0	-18	-11	-12	-1.	-6	-41	-15	-31	-41	-37	-31	1500

Notes: Add suffix "T" to part number for Tape & Reel package (ie: R5012NLT).

## Mechanical

R5012NL



Dimensions:  $\frac{\text{Inches}}{\text{mm}}$

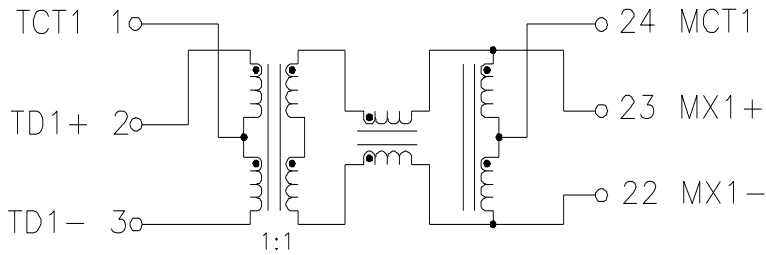
Unless otherwise specified, all tolerances are:  $\pm \frac{.010}{0,25}$



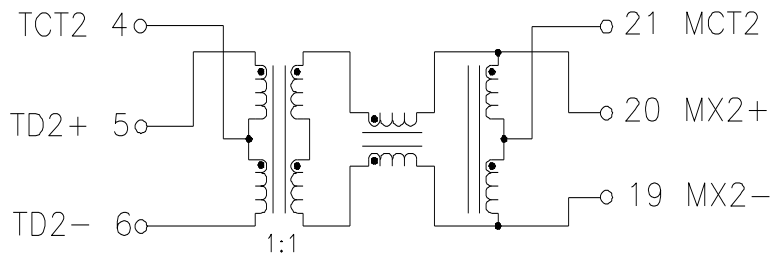
## Electrical Schematic

R5012NL

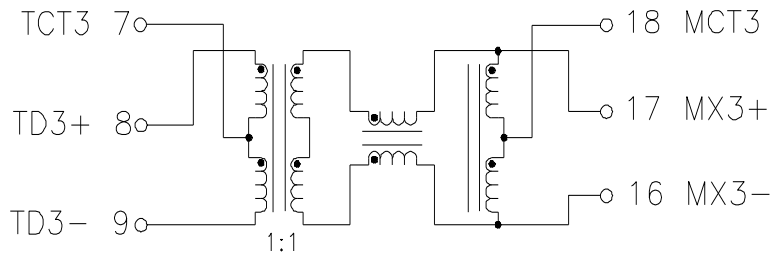
CHANNEL 1



CHANNEL 2



CHANNEL 3



CHANNEL 4

