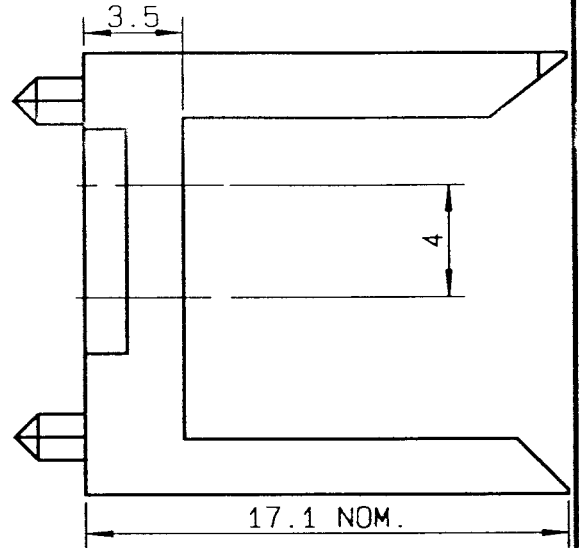
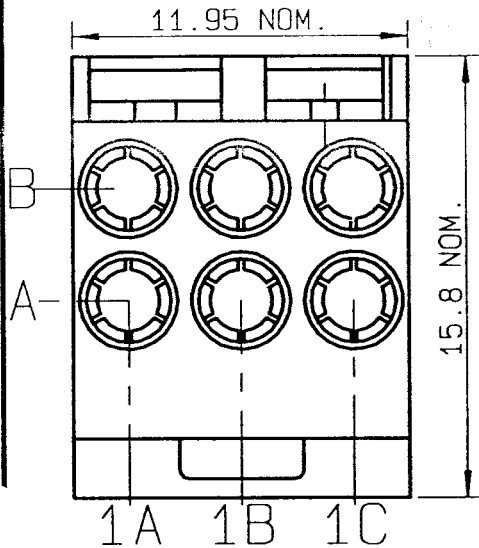


MALE HOUSING 6 WAYS WIDE BODY

R694.261.076

SERIES

MCC2



NOMINAL IMPEDANCE	NA	Ω
FREQUENCY RANGE	NA	GHz
TEMPERATURE RATING	-25/+125	$^{\circ}\text{C}$
V.S.W.R	NA +	$0 \times F(\text{GHz}) \text{Maxi}$
RF INSERTION LOSS	NA	$\sqrt{F}(\text{GHz}) \text{ dB Maxi}$
VOLTAGE RATING	NA	$V_{\text{eff}} \text{ Maxi}$
DIELECTRIC WITHSTANDING VOLTAGE	NA	$V_{\text{eff}} \text{ Mini}$
INSULATION RESISTANCE	NA	$M \Omega \text{ Mini}$
HERMETIC SEAL	NA	$\text{Atm.cm}^3/\text{s}$
LEAKAGE (pressurized only)	NA	
MECHANICAL DURABILITY		Cycles
WEIGHT	1.2	gr

CABLES :	
OTHERS CHARACTERISTICS	
CABLE RETENTION	NA N Mini
CENTER CONTACT RETENTION	
Axial force - mating end	NA N Mini
Axial force - opposite end	NA N Mini
Torque	NA cm.N Mini
RECOMMENDED TORQUES	
Mating	NA cm.N
Panel nut	NA cm.N
Clamp nut	NA cm.N

CONNECTOR PARTS:	MATERIALS	FINISH	(all values are given) in micrometers
BODY			
OUTER CONTACT			
CENTER CONTACT			
INSULATOR			
GASKET			
OTHERS PIECES	LIQUID CRISTAL POLYMER		

ISSUE	CREATION DATE	FILE PART-NUMBER
9637B00	10-OCT-95	



The information given here is subject to change without notice. Design changes may be in order to improve the product.

Connect to the future