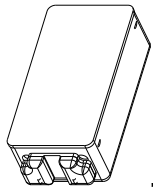
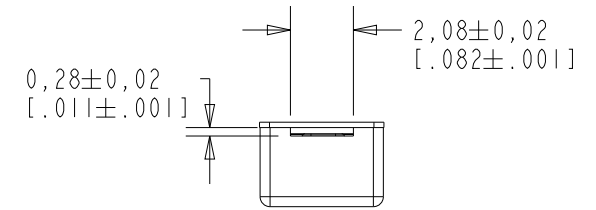
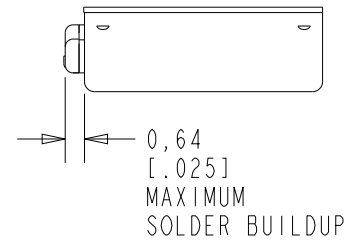
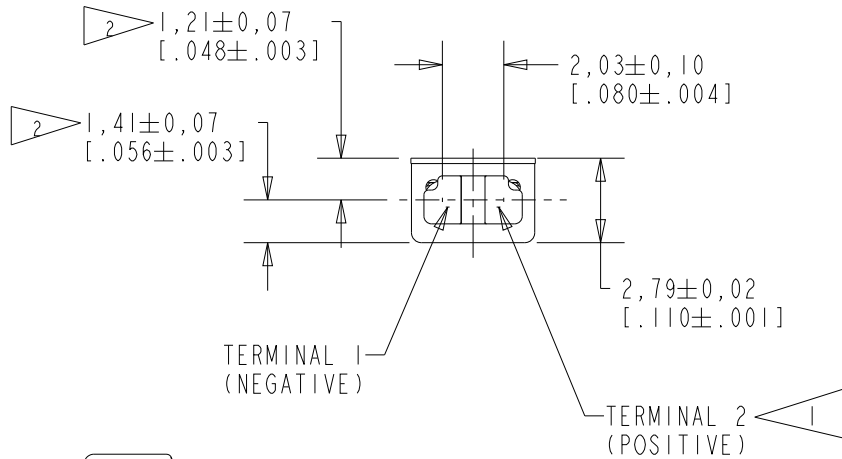


NOTES:

- 1 A POSITIVE GOING VOLTAGE AT TERMINAL 2, RELATIVE TO TERMINAL 1, CAUSES A DECREASE IN PRESSURE AT THE SOUND OUTLET.
- 2 LOCATED FROM TWO SURFACES FOR CUSTOMER CONVENIENCE. ONLY APPLICABLE FROM ONE SURFACE, NOT TO BE USED TOGETHER.



NOMINAL WEIGHT
.35 GRAM

DIMENSIONS IN MILLIMETERS [INCHES]



REVISION	ECR NO.	IMP. DATE	SCALE	DR. BY	DATE
			4:1	JPS	12-9-22
				CH. BY	DATE
				---	---
				APP. BY	DATE
			DO NOT SCALE DRAWING	---	---
			DIMENSIONS IN MILLIMETERS [INCHES]		
TITLE: RECEIVER		RELEASE LEVEL: Design	REVISION: 1	RAI-33651-000	
				SHEET 1.1	
				KE111ASIZE.FRM Rev: B	

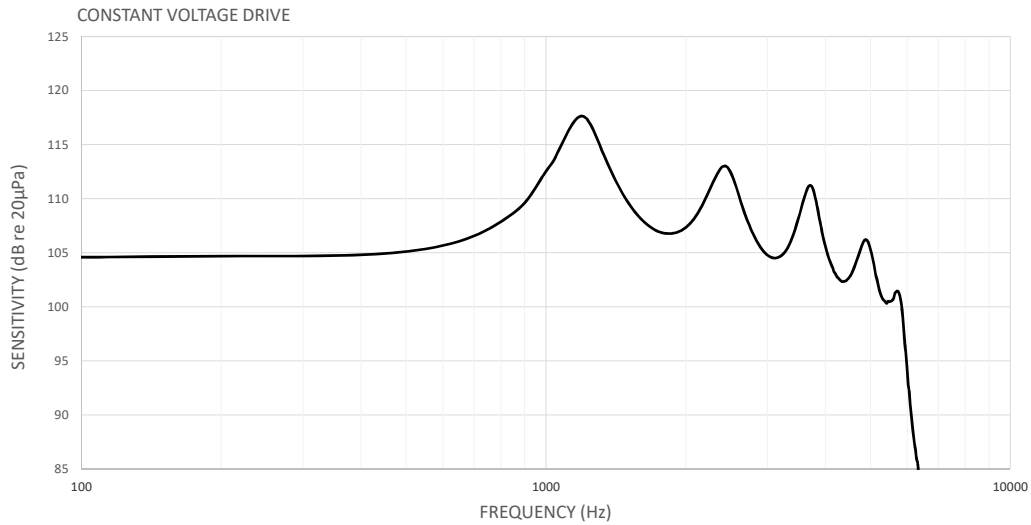
THE RAI-33651-000 IS A BALANCED ARMATURE RECEIVER USED IN BTE HEARING AID APPLICATIONS.

NO DAMPING

RAI-33651-000

SHT 2.1

RoHS COMPLIANT



ACOUSTICAL & ELECTRICAL SPECIFICATIONS

TEST CONDITIONS:	NOMINAL SOURCE VOLTAGE	0.107 Vrms	SOURCE IMPEDANCE	<1 Ohm
UNLESS OTHERWISE SPECIFIED	TUBING	8.0mm x 1.0mm (ID) + 28.0mm x 1.5mm (ID) + 25.0mm x 2.0mm (ID) + 18.0mm x 3.0 mm (ID)		
	COUPLER CAVITY	2 cm ³ , SIMULATED ANSI S3.7 TYPE HA-3 (IEC-60318-5)		

PARAMETER	MINIMUM	NOMINAL	MAXIMUM	UNITS	
DC RESISTANCE	22.5	25	27.5	Ohms	@20°C
IMPEDANCE	500 Hz	30.6	36	41.4	Ohms
	1 kHz	51.0	60	69.0	Ohms
SENSITIVITY	200 Hz	102	105	108	dB SPL
	500 Hz	103.0	105	107	dB SPL
	PEAK1	115.0	117	119	dB SPL
	VALLEY1	105	108	111	dB SPL
	PEAK2	111.0	113	115	dB SPL
	VALLEY2	103.0	106.0	109	dB SPL
	PEAK3	108.0	110.0	114	dB SPL
PEAK1 FREQUENCY	1000	1250	1500	Hz	
VALLEY1 FREQUENCY	1500	1700	1900	Hz	
PEAK2 FREQUENCY	2200	2400	2600	Hz	
VALLEY2 FREQUENCY	2700	2945	3190	Hz	
PEAK3 FREQUENCY	3300	3650	4000	Hz	
TOTAL HARMONIC DISTORTION	1/3 PEAK1	-	-	5	%
	1/2 PEAK1	-	-	5	%

WITH DRIVE = 0.107 Vrms

NOTES:
 PORT LOCATION: 12N
 SOLDER TYPE: RoHS COMPLIANT, SAC 305
 CASE WILL BE ELECTRICALLY ISOLATED FROM THE COIL CIRCUIT.

KNOWLES RESERVES THE RIGHT TO MAKE CHANGES TO IMPROVE RELIABILITY AND PERFORMANCE OF THE PRODUCT.

TENTATIVE

REVISION	C.O. #	IMPLEMENTATION DATE	RELEASE LEVEL	REVISION
			DESIGN	1
WHEN TEST LIMITS ARE USED TO ESTABLISH INCOMING INSPECTION ACCEPTANCE/REJECTION CRITERIA, CORRELATION OF TEST EQUIPMENT WITH KNOWLES IS ALSO REQUIRED FOR ELIMINATION OF EQUIPMENT AND TEST METHOD VARIATION.			DR BY	DATE
			CK BY	DATE
RECEIVER			RAI-33651-000	APP BY
PERFORMANCE SPECIFICATION			SHT 2.1	DATE

KNOWLES CORPORATION