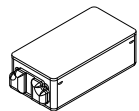
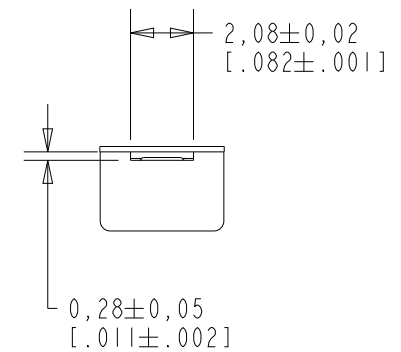
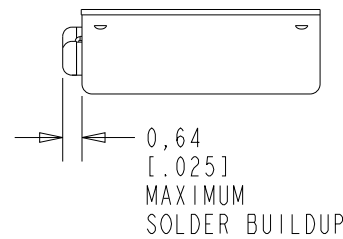
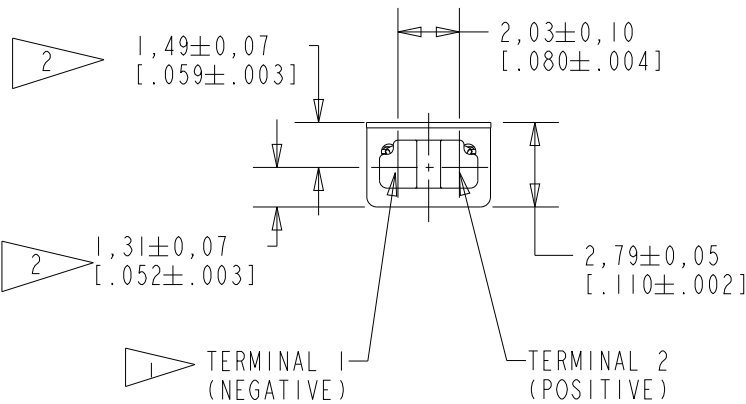
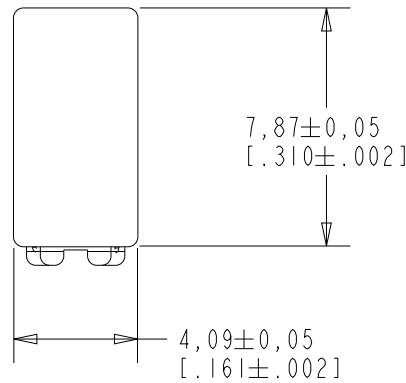


RAI-33767-000

SHT 1.1

NOTES:

- 1 A POSITIVE GOING VOLTAGE AT TERMINAL 2, RELATIVE TO TERMINAL 1, CAUSES A DECREASE IN PRESSURE AT THE SOUND OUTLET.
- 2 LOCATED FROM TWO SURFACES FOR CUSTOMER CONVENIENCE. ONLY APPLICABLE FROM ONE SURFACE, NOT TO BE USED TOGETHER. HORIZONTAL LOCATION FOR TERMINAL CENTERED TO  $\pm 0,17$  [.007].



NOMINAL WEIGHT  
.35 GRAM

DIMENSIONS IN MILLIMETERS [INCHES]

Revision	C.O. #	Implementation Date	RELEASE LEVEL	REVISION
B	PI0003673	8-7-19	Active	B
A	PI0003401	7-29-19		

SCALE: 4:1

DR. BY DATE

DVJ 7-29-19

CK. BY DATE

GJP 7-30-19

APP. BY DATE

GJP 7-30-19

DO NOT SCALE DRAWING

TITLE: RECEIVER

RAI-33767-000

OUTLINE DRAWING

SHT 1.1

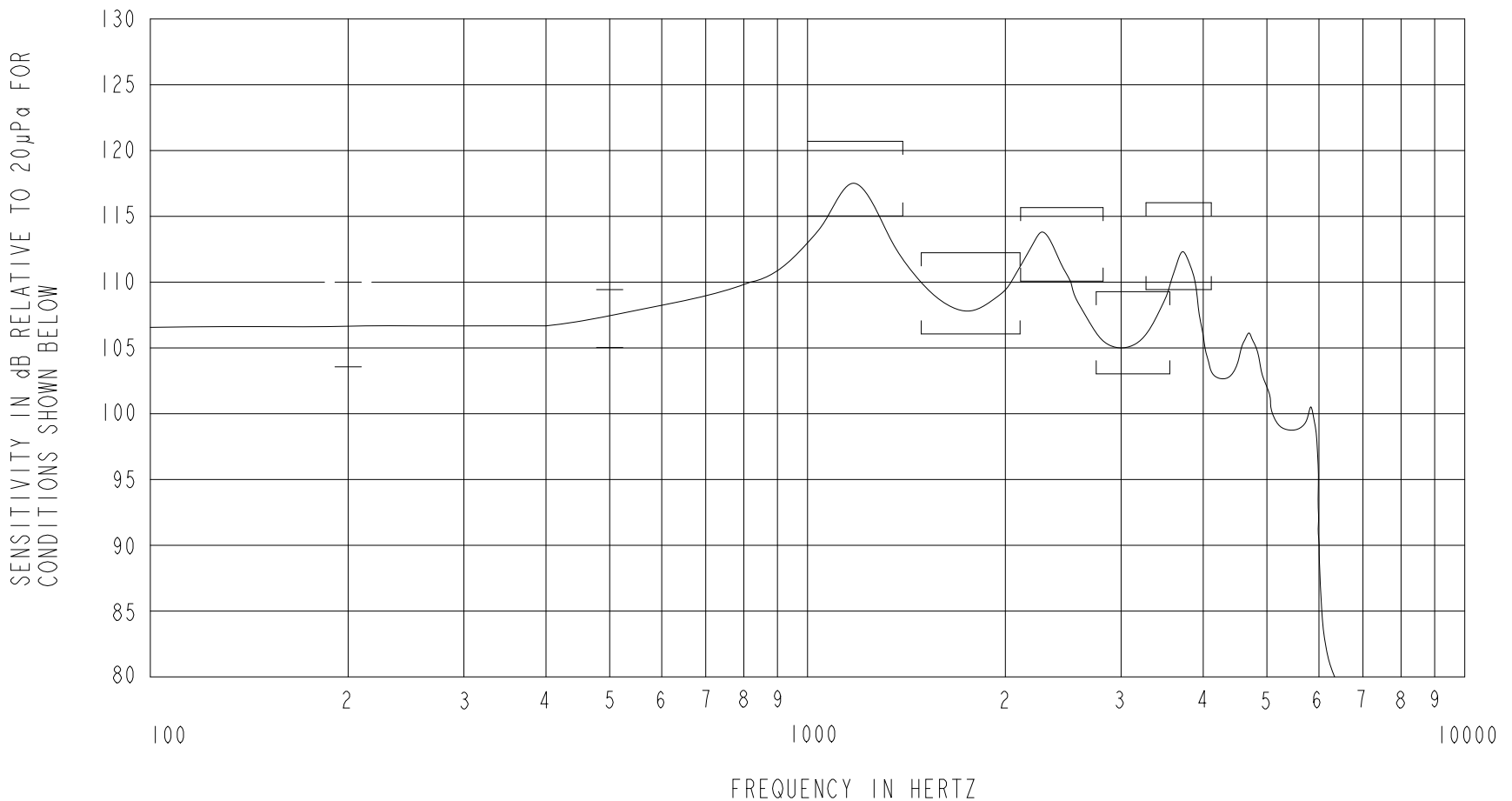
**KNOWLES CORPORATION**

THIS UNIT IS A BALANCED ARMATURE RECEIVER INTENDED FOR USE IN BTE HEARING AIDS, AND IS 1/2 THE SIZE OF AN EF RECEIVER.

RAI-33767-000

SHEET 2.1

CONSTANT VOLTAGE DRIVE CONDITIONS



ACOUSTICAL

SENSITIVITY  
DEVICE WILL PRODUCE THE SPL LISTED BELOW UNDER TEST CONDITIONS DESCRIBED IN TABLE 3. NOMINAL SENSITIVITY AT 500 Hz IS dB RELATIVE TO 20µPa. ALL OTHER VALUES IN dB RELATIVE TO THE SENSITIVITY AT 500 Hz.

FREQUENCY (Hz)	MINIMUM	NOMINAL	MAXIMUM
200 ENV	104.0	107.0	110.0
500 ENV	105.0	107.0	109.0
1000-1500 PKI	115.0	118.0	121.0
1700-2200 VL	106.0	109.0	112.0
2200-2700 PK	110.0	113.0	116.0
2800-3600 VL	103.0	106.0	109.0
3300-4100 PK	109.0	112.0	115.0

TABLE 1

TOTAL HARMONIC DISTORTION  
DEVICE WILL NOT EXCEED TOTAL HARMONIC DISTORTION LEVELS LISTED BELOW.

FREQUENCY (Hz)	AC DRIVE (V rms)	DC BIAS (mA)	LIMIT (%)
1/3 PEAKI	0.11	0	5
1/2 PEAKI	0.11	0	5
1/3 PEAKI	0.314	0	10
1/2 PEAKI	0.314	0	10

TABLE 2

TEST CONDITIONS

NOMINAL SOURCE VOLTAGE	0.11 V rms
SOURCE IMPEDANCE	<1 Ohm
TUBING	8mm X 1mm ID + 28mm X 1.5mm ID EAR HOOK SIMULATOR + 25mm X 2mm ID TUBE + 18mm X 3mm ID TUBE
COUPLER CAVITY	2 cm <sup>3</sup> , SIMULATED ANSI S3.7 TYPE HA-3 (IEC-60318-5)

TABLE 3

ELECTRICAL

DC RESISTANCE	25.0 OHMS ± 10%
IMPEDANCE @ 500 Hz	38.0 OHMS ± 15%
IMPEDANCE @ 1000 Hz	76.0 OHMS ± 15%

TABLE 4

ISOLATION: CASE WILL BE ELECTRICALLY ISOLATED FROM THE COIL CIRCUIT.

MECHANICAL

PORT LOCATION: 12N

SOLDER TYPE: SAC305

TEMPERATURE

OPERATING: SENSITIVITY WILL NOT VARY MORE THAN +1/-3 dB FROM -17°C TO 63°C

STORAGE: -40°C TO 63°C

KNOWLES CORPORATION

Revision	C.O. #	Implementation Date	RELEASE LEVEL	REVISION
B	PI0003673	8-7-19	Active	B
A	PI0003401	7-29-19		
WHEN TEST LIMITS ARE USED TO ESTABLISH INCOMING INSPECTION ACCEPTANCE/REJECTION CRITERIA, CORRELATION OF TEST EQUIPMENT WITH KNOWLES IS ALSO REQUIRED FOR ELIMINATION OF EQUIPMENT AND TEST METHOD VARIATION			DR. BY	DATE
TITLE: RECEIVER PERFORMANCE SPECIFICATION			DVJ	7-29-19
			CK. BY	DATE
RAI-33767-000 SHT 2.1			GJP	7-30-19
			APP. BY	DATE
			GJP	7-30-19