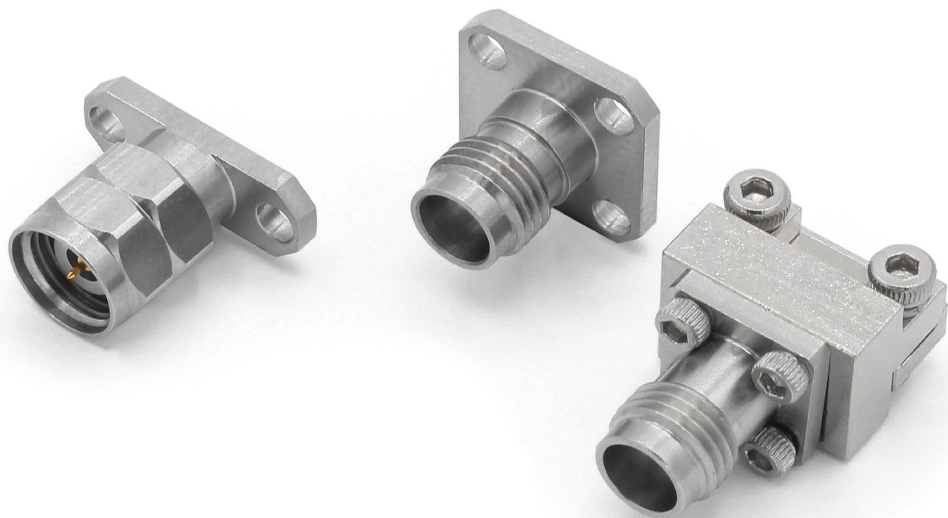


The 2.40mm series from the RF connector range form part of the wide ranging Radio Frequency interconnect mechanisms, with the 2.40mm connectors being more robust than the traditional SMA.

These connectors are accessible in standard polarity designs with bulkhead and mount-less categories. Available in both male and female versions, covering the frequency range up to 50GHz.



Key Features:

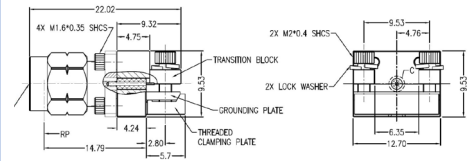
- 50-ohm Impedance
- Insulation resistance >5000MΩ
- Durability >500 Cycles
- Low Insertion Loss
- Available in Plug or Jack
- Beryllium Copper Contact Pin
- Screw-on Coupling Mechanism
- Body Material available in Stainless Steel Passivation

2.40mm Series End Launch Connector



RF240EJ

- ⊕ Max Voltage 150V
- ⊕ Operating Temperature -55C to +125C
- ⊕ Frequency Range 0-50GHz
- ⊕ VSWR <1.30
- ⊕ Dielectric withstanding Voltage >500V
- ⊕ Available with Extended PTFE



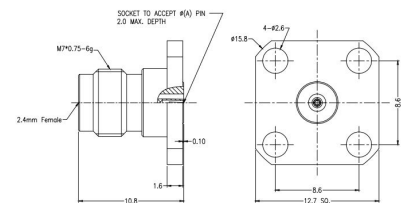
Part Number	Plug or Jack
RF240EJ	Jack
RF240EP	Plug

2.40mm Series Socket 4 Hole Flange



RF240A4JCCA

- ⊕ Max Voltage 150V
- ⊕ Operating Temperature -40C to +85C
- ⊕ Frequency Range 0-50GHz
- ⊕ VSWR <1.30
- ⊕ Dielectric withstanding Voltage >500V
- ⊕ Available with Extended PTFE



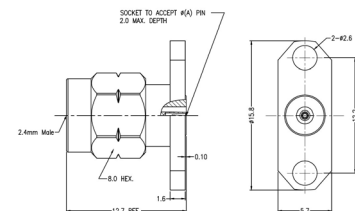
Part Number	Plug or Jack	Flange Mount Length	Mount Hole Distance	Socket Diameter
RF240A4JCCA	Jack	12.70mm	8.60mm	0.23mm
RF240A4JCCB	Jack	12.70mm	8.60mm	0.30mm
RF240A4JCCE	Jack	12.70mm	8.60mm	0.51mm
RF240A4PCCA	Plug	12.70mm	8.60mm	0.23mm
RF240A4PCCB	Plug	12.70mm	8.60mm	0.30mm
RF240A4PCCE	Plug	12.70mm	8.60mm	0.51mm

2.40mm Series Socket 2 Hole Flange



RF240A2PEGA

- ⊕ Max Voltage 150V
- ⊕ Operating Temperature -40C to +85C
- ⊕ Frequency Range 0-50GHz
- ⊕ VSWR <1.30
- ⊕ Dielectric withstanding Voltage >500V
- ⊕ Available with Extended PTFE



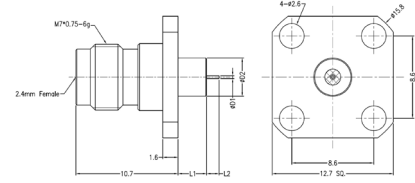
Part Number	Plug or Jack	Flange Mount Length	Mount Hole Distance	Socket Diameter
RF240A2JEGA	Jack	15.80mm	12.20mm	0.23mm
RF240A2JEGB	Jack	15.80mm	12.20mm	0.30mm
RF240A2JEGE	Jack	15.80mm	12.20mm	0.51mm
RF240A2PEGA	Plug	15.80mm	12.20mm	0.23mm
RF240A2PEGB	Plug	15.80mm	12.20mm	0.30mm
RF240A2PEGE	Plug	15.80mm	12.20mm	0.51mm

2.40mm Series Pin with Extended PTFE 4 Hole Flange



RF240A4JCCADGA

- ⊕ Max Voltage 150V
- ⊕ Operating Temperature -40C to +85C
- ⊕ Frequency Range 0-50GHz
- ⊕ VSWR <1.30
- ⊕ Dielectric withstanding Voltage >500V
- ⊕ Available with Extended PTFE
- ⊕ Flange Mount Length 12.70mm
- ⊕ Mount Hole Distance 8.60mm



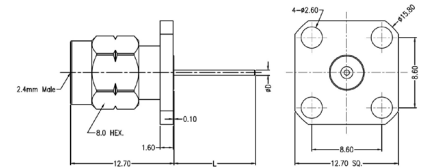
Part Number	Plug or Jack	Pin Diameter	Pin Length	Extended PTFE Dia	Extended PTFE Length
RF240A4JCCADGA	Jack	0.30mm	1.50mm	4.00mm	1.40mm
RF240A4JCCADGB	Jack	0.30mm	1.50mm	4.00mm	3.00mm
RF240A4JCCADAA	Jack	0.30mm	1.50mm	1.67mm	1.40mm
RF240A4JCCADAB	Jack	0.30mm	1.50mm	1.67mm	3.00mm
RF240A4JCCCCBG	Jack	0.60mm	1.27mm	2.00mm	6.35mm
RF240A4JCCCEBF	Jack	0.60mm	1.90mm	2.00mm	5.10mm

2.40mm Series Pin without Extended PTFE 4 Hole Flange



RF240A4PCCGM

- ⊕ Max Voltage 150V
- ⊕ Operating Temperature -40C to +85C
- ⊕ Frequency Range 0-50GHz
- ⊕ VSWR <1.30
- ⊕ Dielectric withstanding Voltage >500V
- ⊕ Available with Extended PTFE



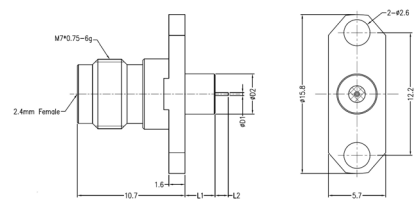
Part Number	Plug or Jack	Flange Mount Length	Mount Hole Distance	Pin Diameter	Pin Length
RF240A4JCCCKG	Jack	12.70mm	8.60mm	1.20mm	3.00mm
RF240A4JCCJJ	Jack	12.70mm	8.60mm	1.04mm	6.34mm
RF240A4JCCII	Jack	12.70mm	8.60mm	1.00mm	5.50mm
RF240A4JCCGM	Jack	12.70mm	8.60mm	0.86mm	8.75mm
RF240A4JCCEN	Jack	12.70mm	8.60mm	0.75mm	9.00mm
RF240A4JCCDK	Jack	12.70mm	8.60mm	0.64mm	6.84mm
RF240A4JCCDO	Jack	12.70mm	8.60mm	0.64mm	10.00mm
RF240A4PCCGM	Plug	12.70mm	8.60mm	0.86mm	8.75mm
RF240A4PCCDO	Plug	12.70mm	8.60mm	0.64mm	10.00mm

2.40mm Series Pin with Extended PTFE 2 Hole Flange



RF240A2JEGADAA

- ⊕ Max Voltage 150V
- ⊕ Operating Temperature -40C to +85C
- ⊕ Frequency Range 0-50GHz
- ⊕ VSWR <1.30
- ⊕ Dielectric withstanding Voltage >500V
- ⊕ Available with Extended PTFE
- ⊕ Flange Mount Length 15.80mm
- ⊕ Mount Hole Distance 12.20mm



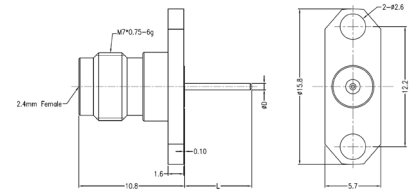
Part Number	Plug or Jack	Pin Diameter	Pin Length	Extended PTFE Dia	Extended PTFE Length
RF240A2JEGADGA	Jack	0.30mm	1.50mm	4.00mm	1.40mm
RF240A2JEGADGB	Jack	0.30mm	1.50mm	4.00mm	3.00mm
RF240A2JEGADAA	Jack	0.30mm	1.50mm	1.67mm	1.40mm
RF240A2JEGADAB	Jack	0.30mm	1.50mm	1.67mm	3.00mm
RF240A2JEGCCBG	Jack	0.60mm	1.27mm	2.00mm	6.35mm
RF240A2JEGCEBF	Jack	0.60mm	1.90mm	2.00mm	5.10mm

2.40mm Series Pin without Extended PTFE 2 Hole Flange



RF240A2PEGGM

- ⊕ Max Voltage 150V
- ⊕ Operating Temperature -40C to +85C
- ⊕ Frequency Range 0-50GHz
- ⊕ VSWR <1.30
- ⊕ Dielectric withstanding Voltage >500V
- ⊕ Available with Extended PTFE



Part Number	Plug or Jack	Flange Mount Length	Mount Hole Distance	Pin Diameter	Pin Length
RF240A2JEGKG	Jack	15.80mm	12.20mm	1.20mm	3.00mm
RF240A2JEGJJ	Jack	15.80mm	12.20mm	1.04mm	6.34mm
RF240A2JEGII	Jack	15.80mm	12.20mm	1.00mm	5.50mm
RF240A2JEGGM	Jack	15.80mm	12.20mm	0.86mm	8.75mm
RF240A2JEGEN	Jack	15.80mm	12.20mm	0.75mm	9.00mm
RF240A2JEGDK	Jack	15.80mm	12.20mm	0.64mm	6.84mm
RF240A2JEGDO	Jack	15.80mm	12.20mm	0.64mm	10.00mm
RF240A2PEGGM	Plug	15.80mm	12.20mm	0.86mm	8.75mm
RF240A2PEGDO	Plug	15.80mm	12.20mm	0.64mm	10.00mm