

The 2.92mm (K) connector range operate mode-free up to 40GHz and are ideal for high-frequency module and T&M applications. These connectors are also known as K connector, K Type, SMK adapter.

Bulgin's High-quality 2.92mm connectors are constructed with beryllium copper contacts, brass or stainless-steel bodies. These connectors have a thicker wall than a standard SMA and also mate with the SMA and 3.50mm connector offerings.



Key Features:

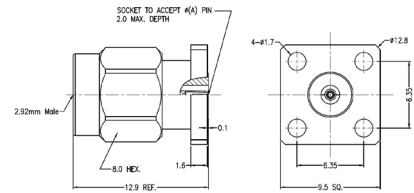
- 50-ohm Impedance
- Insulation resistance >5000MΩ
- Durability >500 Cycles
- Available in Male and Female Threads
- Available in Plug or Jack
- Beryllium Copper Contact Pin
- Body Material available in Stainless Steel Passivation and Brass

2.92mm Series Socket 4 Hole Flange



RF292A4PAAE

- ⊕ Max Voltage 250V
- ⊕ Operating Temperature -40C to +85C
- ⊕ Frequency Range 0-40GHz
- ⊕ VSWR <1.30
- ⊕ Dielectric withstanding Voltage >750V
- ⊕ Available with Extended PTFE



| Part Number | Plug or Jack | Flange Mount Length | Mount Hole Distance | Socket Diameter |
|-------------|--------------|---------------------|---------------------|-----------------|
| RF292A4JCCA | Jack         | 12.70mm             | 8.60mm              | 0.23mm          |
| RF292A4JCCB | Jack         | 12.70mm             | 8.60mm              | 0.30mm          |
| RF292A4JCCC | Jack         | 12.70mm             | 8.60mm              | 0.38mm          |
| RF292A4JCCE | Jack         | 12.70mm             | 8.60mm              | 0.51mm          |
| RF292A4JAAA | Jack         | 9.50mm              | 6.35mm              | 0.23mm          |
| RF292A4JAAB | Jack         | 9.50mm              | 6.35mm              | 0.30mm          |
| RF292A4JAAC | Jack         | 9.50mm              | 6.35mm              | 0.38mm          |
| RF292A4JAAE | Jack         | 9.50mm              | 6.35mm              | 0.51mm          |
| RF292A4PCCA | Plug         | 12.70mm             | 8.60mm              | 0.23mm          |
| RF292A4PCCB | Plug         | 12.70mm             | 8.60mm              | 0.30mm          |
| RF292A4PCCC | Plug         | 12.70mm             | 8.60mm              | 0.38mm          |
| RF292A4PCCE | Plug         | 12.70mm             | 8.60mm              | 0.51mm          |
| RF292A4PAAA | Plug         | 9.50mm              | 6.35mm              | 0.23mm          |
| RF292A4PAAB | Plug         | 9.50mm              | 6.35mm              | 0.30mm          |
| RF292A4PAAC | Plug         | 9.50mm              | 6.35mm              | 0.38mm          |
| RF292A4PAAE | Plug         | 9.50mm              | 6.35mm              | 0.51mm          |

2.92mm Series Socket 2 Hole Flange



RF292A2JCCA

- ⊕ Max Voltage 250V
- ⊕ Operating Temperature -40C to +85C
- ⊕ Frequency Range 0-40GHz
- ⊕ VSWR <1.30
- ⊕ Dielectric withstanding Voltage >750V
- ⊕ Available with Extended PTFE



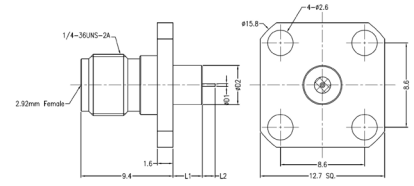
| Part Number | Plug or Jack | Flange Mount Length | Mount Hole Distance | Socket Diameter |
|-------------|--------------|---------------------|---------------------|-----------------|
| RF292A2JEGA | Jack         | 15.80mm             | 12.20mm             | 0.23mm          |
| RF292A2JEGB | Jack         | 15.80mm             | 12.20mm             | 0.30mm          |
| RF292A2JEGC | Jack         | 15.80mm             | 12.20mm             | 0.38mm          |
| RF292A2JEGE | Jack         | 15.80mm             | 12.20mm             | 0.51mm          |
| RF292A2JCCA | Jack         | 12.70mm             | 8.60mm              | 0.23mm          |
| RF292A2JCCB | Jack         | 12.70mm             | 8.60mm              | 0.30mm          |
| RF292A2JCCC | Jack         | 12.70mm             | 8.60mm              | 0.38mm          |
| RF292A2JCCE | Jack         | 12.70mm             | 8.60mm              | 0.51mm          |
| RF292A2JDFA | Jack         | 14.00mm             | 10.20mm             | 0.23mm          |
| RF292A2JDFB | Jack         | 14.00mm             | 10.20mm             | 0.30mm          |
| RF292A2JDFC | Jack         | 14.00mm             | 10.20mm             | 0.38mm          |
| RF292A2JDFA | Jack         | 14.00mm             | 10.20mm             | 0.51mm          |
| RF292A2PEGA | Plug         | 15.80mm             | 12.20mm             | 0.23mm          |
| RF292A2PEGB | Plug         | 15.80mm             | 12.20mm             | 0.30mm          |
| RF292A2PEGC | Plug         | 15.80mm             | 12.20mm             | 0.38mm          |
| RF292A2PEGE | Plug         | 15.80mm             | 12.20mm             | 0.51mm          |
| RF292A2PCEA | Plug         | 12.70mm             | 8.90mm              | 0.23mm          |
| RF292A2PCEB | Plug         | 12.70mm             | 8.90mm              | 0.30mm          |
| RF292A2PCEC | Plug         | 12.70mm             | 8.90mm              | 0.38mm          |
| RF292A2PCEE | Plug         | 12.70mm             | 8.90mm              | 0.51mm          |

2.92mm Series Pin with Extended PTFE 4 Hole Flange



RF292A2JCCADGA

- ⊕ Max Voltage 250V
- ⊕ Operating Temperature -40C to +85C
- ⊕ Frequency Range 0-40GHz
- ⊕ VSWR <1.30
- ⊕ Dielectric withstanding Voltage >750V
- ⊕ Available with Extended PTFE
- ⊕ Flange Mount Length 12.70mm
- ⊕ Mount Hole Distance 8.60mm



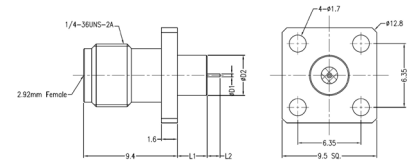
| Part Number    | Plug or Jack | Pin Diameter | Pin Length | Extended PTFE Dia | Extended PTFE Length |
|----------------|--------------|--------------|------------|-------------------|----------------------|
| RF292A4JCCADGA | Jack         | 0.30mm       | 1.50mm     | 4.00mm            | 1.40mm               |
| RF292A4JCCADGB | Jack         | 0.30mm       | 1.50mm     | 4.00mm            | 3.00mm               |
| RF292A4JCCCGH  | Jack         | 0.60mm       | 1.27mm     | 4.00mm            | 10.10mm              |
| RF292A4JCCADAA | Jack         | 0.30mm       | 1.50mm     | 1.67mm            | 1.40mm               |
| RF292A4JCCADAB | Jack         | 0.30mm       | 1.50mm     | 1.67mm            | 3.00mm               |

2.92mm Series Pin with Extended PTFE 4 Hole Flange



RF292A2JAAADGA

- ⊕ Max Voltage 250V
- ⊕ Operating Temperature -40C to +85C
- ⊕ Frequency Range 0-40GHz
- ⊕ VSWR <1.30
- ⊕ Dielectric withstanding Voltage >750V
- ⊕ Available with Extended PTFE
- ⊕ Flange Mount Length 9.50mm
- ⊕ Mount Hole Distance 6.35 mm



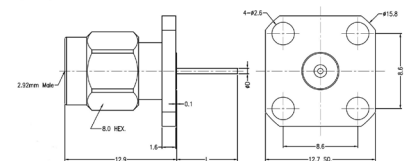
| Part Number    | Plug or Jack | Pin Diameter | Pin Length | Extended PTFE Dia | Extended PTFE Length |
|----------------|--------------|--------------|------------|-------------------|----------------------|
| RF292A4JAAADGA | Jack         | 0.30mm       | 1.50mm     | 4.00mm            | 1.40mm               |
| RF292A4JAAADGB | Jack         | 0.30mm       | 1.50mm     | 4.00mm            | 3.00mm               |
| RF292A4JAAACGH | Jack         | 0.60mm       | 1.27mm     | 4.00mm            | 10.10mm              |
| RF292A4JAAADAA | Jack         | 0.30mm       | 1.50mm     | 1.67mm            | 1.40mm               |
| RF292A4JAAADAB | Jack         | 0.30mm       | 1.50mm     | 1.67mm            | 3.00mm               |

2.92mm Series Pin without Extended PTFE 4 Hole Flange



RF292A4PCCDK

- ⊕ Max Voltage 250V
- ⊕ Operating Temperature -40C to +85C
- ⊕ Frequency Range 0-40GHz
- ⊕ VSWR <1.30
- ⊕ Dielectric withstanding Voltage >750V
- ⊕ Available with Extended PTFE



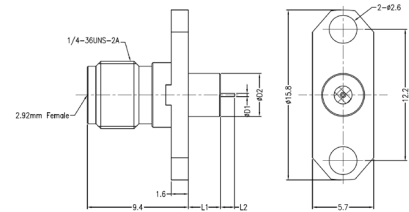
| Part Number  | Plug or Jack | Flange Mount Length | Pin Diameter | Pin Length |
|--------------|--------------|---------------------|--------------|------------|
| RF292A4JCCAL | Jack         | 12.70mm             | 0.30mm       | 7.00mm     |
| RF292A4JCCDK | Jack         | 12.70mm             | 0.64mm       | 6.84mm     |
| RF292A4JCCDP | Jack         | 12.70mm             | 0.64mm       | 10.92mm    |
| RF292A4JCCES | Jack         | 12.70mm             | 0.75mm       | 30.00mm    |
| RF292A4JAAAL | Jack         | 9.50mm              | 0.30mm       | 7.00mm     |
| RF292A4JAADK | Jack         | 9.50mm              | 0.64mm       | 6.84mm     |
| RF292A4JAADP | Jack         | 9.50mm              | 0.64mm       | 10.92mm    |
| RF292A4JAAES | Jack         | 9.50mm              | 0.75mm       | 30.00mm    |
| RF292A4PCCDK | Plug         | 12.70mm             | 0.64mm       | 6.84mm     |
| RF292A4PCCDP | Plug         | 12.70mm             | 0.64mm       | 10.92mm    |
| RF292A4PAADK | Plug         | 9.50mm              | 0.64mm       | 6.84mm     |
| RF292A4PAADP | Plug         | 9.50mm              | 0.64mm       | 10.92mm    |

2.92mm Series Pin with Extended PTFE 2 Hole Flange



RF292A2JEGADGA

- ⊕ Max Voltage 250V
- ⊕ Operating Temperature -40C to +85C
- ⊕ Frequency Range 0-40GHz
- ⊕ VSWR <1.30
- ⊕ Dielectric withstanding Voltage >750V
- ⊕ Available with Extended PTFE
- ⊕ Flange Mount Length 15.80mm
- ⊕ Mount Hole Distance 12.20mm



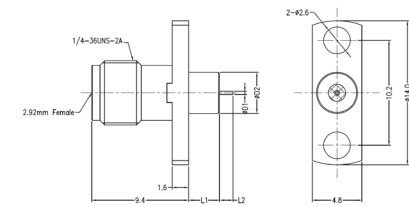
| Part Number    | Plug or Jack | Pin Diameter | Pin Length | Extended PTFE Dia | Extended PTFE Length |
|----------------|--------------|--------------|------------|-------------------|----------------------|
| RF292A2JEGADGA | Jack         | 0.30mm       | 1.50mm     | 4.00mm            | 1.40mm               |
| RF292A2JEGADGB | Jack         | 0.30mm       | 1.50mm     | 4.00mm            | 3.00mm               |
| RF292A2JEGCCGH | Jack         | 0.60mm       | 1.27mm     | 4.00mm            | 10.10mm              |
| RF292A2JEGADAA | Jack         | 0.30mm       | 1.50mm     | 1.67mm            | 1.40mm               |
| RF292A2JEGADAB | Jack         | 0.30mm       | 1.50mm     | 1.67mm            | 3.00mm               |

2.92mm Series Pin with Extended PTFE 2 Hole Flange



RF292A2JDFADGA

- ⊕ Max Voltage 250V
- ⊕ Operating Temperature -40C to +85C
- ⊕ Frequency Range 0-40GHz
- ⊕ VSWR <1.30
- ⊕ Dielectric withstanding Voltage >750V
- ⊕ Available with Extended PTFE
- ⊕ Flange Mount Length 14.00mm
- ⊕ Mount Hole Distance 10.20mm



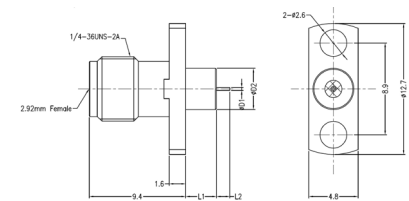
| Part Number    | Plug or Jack | Pin Diameter | Pin Length | Extended PTFE Dia | Extended PTFE Length |
|----------------|--------------|--------------|------------|-------------------|----------------------|
| RF292A2JDFADGA | Jack         | 0.30mm       | 1.50mm     | 4.00mm            | 1.40mm               |
| RF292A2JDFADGB | Jack         | 0.30mm       | 1.50mm     | 4.00mm            | 3.00mm               |
| RF292A2JDFCCGH | Jack         | 0.60mm       | 1.27mm     | 4.00mm            | 10.10mm              |
| RF292A2JDFADAA | Jack         | 0.30mm       | 1.50mm     | 1.67mm            | 1.40mm               |
| RF292A2JDFADAB | Jack         | 0.30mm       | 1.50mm     | 1.67mm            | 3.00mm               |

2.92mm Series Pin with Extended PTFE 2 Hole Flange



RF292A2JCEADGA

- ⊕ Max Voltage 250V
- ⊕ Operating Temperature -40C to +85C
- ⊕ Frequency Range 0-40GHz
- ⊕ VSWR <1.30
- ⊕ Dielectric withstanding Voltage >750V
- ⊕ Available with Extended PTFE
- ⊕ Flange Mount Length 12.70mm
- ⊕ Mount Hole Distance 8.90mm



| Part Number    | Plug or Jack | Pin Diameter | Pin Length | Extended PTFE Dia | Extended PTFE Length |
|----------------|--------------|--------------|------------|-------------------|----------------------|
| RF292A2JCEADGA | Jack         | 0.30mm       | 1.50mm     | 4.00mm            | 1.40mm               |
| RF292A2JCEADGB | Jack         | 0.30mm       | 1.50mm     | 4.00mm            | 3.00mm               |
| RF292A2JCECCGH | Jack         | 0.60mm       | 1.27mm     | 4.00mm            | 10.10mm              |
| RF292A2JCEADAA | Jack         | 0.30mm       | 1.50mm     | 1.67mm            | 1.40mm               |
| RF292A2JCEADAB | Jack         | 0.30mm       | 1.50mm     | 1.67mm            | 3.00mm               |

2.92mm Series Pin with Extended PTFE 2 Hole Flange



RF292A2JCCADGA

- ⊕ Max Voltage 250V
- ⊕ Operating Temperature -40C to +85C
- ⊕ Frequency Range 0-40GHz
- ⊕ VSWR <1.30
- ⊕ Dielectric withstanding Voltage >750V
- ⊕ Available with Extended PTFE
- ⊕ Flange Mount Length 12.70mm
- ⊕ Mount Hole Distance 8.60mm



| Part Number    | Plug or Jack | Pin Diameter | Pin Length | Extended PTFE Dia | Extended PTFE Length |
|----------------|--------------|--------------|------------|-------------------|----------------------|
| RF292A2JCCADGA | Jack         | 0.30mm       | 1.50mm     | 4.00mm            | 1.40mm               |
| RF292A2JCCADGB | Jack         | 0.30mm       | 1.50mm     | 4.00mm            | 3.00mm               |
| RF292A2JCCCGH  | Jack         | 0.60mm       | 1.27mm     | 4.00mm            | 10.10mm              |
| RF292A2JCCADAA | Jack         | 0.30mm       | 1.50mm     | 1.67mm            | 1.40mm               |
| RF292A2JCCADAB | Jack         | 0.30mm       | 1.50mm     | 1.67mm            | 3.00mm               |

2.92mm Series Pin without Extended PTFE 2 Hole Flange



RF292A2JEGAL

- ⊕ Max Voltage 250V
- ⊕ Operating Temperature -40C to +85C
- ⊕ Frequency Range 0-40GHz
- ⊕ VSWR <1.30
- ⊕ Dielectric withstanding Voltage >750V
- ⊕ Available with Extended PTFE



| Part Number  | Plug or Jack | Flange Mount Length | Mount Hole Distance | Pin Diameter | Pin Length |
|--------------|--------------|---------------------|---------------------|--------------|------------|
| RF292A2JEGAL | Jack         | 15.80mm             | 12.20mm             | 0.30mm       | 7.00mm     |
| RF292A2JEGDK | Jack         | 15.80mm             | 12.20mm             | 0.64mm       | 6.84mm     |
| RF292A2JEGDP | Jack         | 15.80mm             | 12.20mm             | 0.64mm       | 10.92mm    |
| RF292A2JEGES | Jack         | 15.80mm             | 12.20mm             | 0.75mm       | 30.00mm    |
| RF292A2JCCAL | Jack         | 12.70mm             | 8.60mm              | 0.30mm       | 7.00mm     |
| RF292A2JCCDK | Jack         | 12.70mm             | 8.60mm              | 0.64mm       | 6.84mm     |
| RF292A2JCCDP | Jack         | 12.70mm             | 8.60mm              | 0.64mm       | 10.92mm    |
| RF292A2JCCES | Jack         | 12.70mm             | 8.60mm              | 0.75mm       | 30.00mm    |
| RF292A2JDFAL | Jack         | 14.00mm             | 10.20mm             | 0.30mm       | 7.00mm     |
| RF292A2JDFDK | Jack         | 14.00mm             | 10.20mm             | 0.64mm       | 6.84mm     |
| RF292A2JDFDP | Jack         | 14.00mm             | 10.20mm             | 0.64mm       | 10.92mm    |
| RF292A2JDFES | Jack         | 14.00mm             | 10.20mm             | 0.75mm       | 30.00mm    |
| RF292A2JCEAL | Jack         | 12.70mm             | 8.90mm              | 0.30mm       | 7.00mm     |
| RF292A2JCEDK | Jack         | 12.70mm             | 8.90mm              | 0.64mm       | 6.84mm     |
| RF292A2JCEDP | Jack         | 12.70mm             | 8.90mm              | 0.64mm       | 10.92mm    |
| RF292A2JCEES | Jack         | 12.70mm             | 8.90mm              | 0.75mm       | 30.00mm    |
| RF292A2PEGDK | Plug         | 15.80mm             | 12.20mm             | 0.64mm       | 6.84mm     |
| RF292A2PEGDP | Plug         | 15.80mm             | 12.20mm             | 0.64mm       | 10.92mm    |
| RF292A2PDFDK | Plug         | 14.00mm             | 10.20mm             | 0.64mm       | 6.84mm     |
| RF292A2PDFDP | Plug         | 14.00mm             | 10.20mm             | 0.64mm       | 10.92mm    |
| RF292A2PCEDK | Plug         | 12.70mm             | 8.90mm              | 0.64mm       | 6.84mm     |
| RF292A2PCEDP | Plug         | 12.70mm             | 8.90mm              | 0.64mm       | 10.92mm    |

2.92mm Series Edge Launch Connector



RF292CP

- ⊕ Max Voltage 250V
- ⊕ Operating Temperature -40C to +85C
- ⊕ Frequency Range 0-40GHz
- ⊕ VSWR <1.30
- ⊕ Dielectric withstanding Voltage >750V
- ⊕ Only available in Brass with Gold Plating



| Part Number | Plug or Jack | PCB Thickness |
|-------------|--------------|---------------|
| RF292CPA    | Plug         | 0.61mm        |
| RF292CPB    | Plug         | 0.87mm        |
| RF292CPC    | Plug         | 1.78mm        |
| RF292CPD    | Plug         | 1.88mm        |

2.92mm Series End Launch Connector



RF292EJ

- ⊕ Max Voltage 250V
- ⊕ Operating Temperature -55C to +125C
- ⊕ Frequency Range 0-40GHz
- ⊕ VSWR <1.50
- ⊕ Dielectric withstanding Voltage >750V



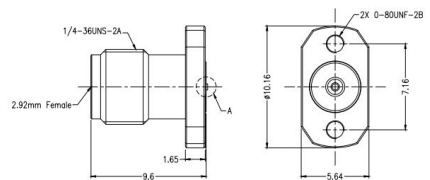
| Part Number | Plug or Jack |
|-------------|--------------|
| RF292EJ     | Jack         |
| RF292EP     | Plug         |

2.92mm Series Compression Mount Connector



RF292DJB

- ⊕ Max Voltage 250V
- ⊕ Operating Temperature -55C to +125C
- ⊕ Frequency Range 0-40GHz
- ⊕ VSWR <1.25
- ⊕ Dielectric withstanding Voltage >750V



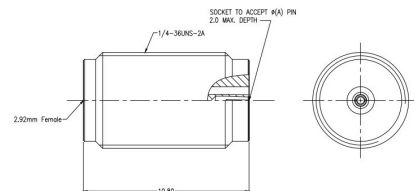
| Part Number | Plug or Jack | Stripline or Microstrip Line |
|-------------|--------------|------------------------------|
| RF292DJB    | Jack         | Stripline                    |
| RF292DJA    | Jack         | Microstrip Line              |

2.92mm Series Straight Connector



RF292AJA

- ⊕ Max Voltage 250V
- ⊕ Operating Temperature -65C to +165C
- ⊕ Frequency Range 0-40GHz
- ⊕ VSWR <1.30
- ⊕ Dielectric withstanding Voltage >750V



| Part Number | Plug or Jack | Flange Mount Length | STA 142, UFB, GORE, 1401 |
|-------------|--------------|---------------------|--------------------------|
| RF292AJA    | Jack         | 0.23mm              | -                        |
| RF292AJB    | Jack         | 0.30mm              | -                        |
| RF292AJC    | Jack         | 0.38mm              | -                        |
| RF292AJE    | Jack         | 0.51mm              | -                        |
| RF292APG    | Plug         | -                   | Yes                      |
| RF292AJG    | Jack         | -                   | Yes                      |