

The 2.92mm (K) connector range operate mode-free up to 40GHz and are ideal for high-frequency module and T&M applications. These connectors are also known as K connector, K Type, SMK adapter.

Bulgin's High-quality 2.92mm connectors are constructed with beryllium copper contacts, brass or stainless-steel bodies. These connectors have a thicker wall than a standard SMA and also mate with the SMA and 3.50mm connector offerings.



Key Features:

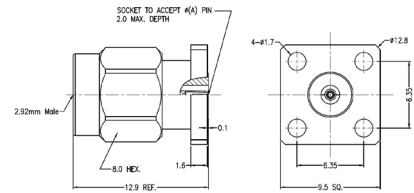
- 50-ohm Impedance
- Insulation resistance >5000MΩ
- Durability >500 Cycles
- Available in Male and Female Threads
- Available in Plug or Jack
- Beryllium Copper Contact Pin
- Body Material available in Stainless Steel Passivation and Brass

2.92mm Series Socket 4 Hole Flange



RF292A4PAAE

- ⊕ Max Voltage 250V
- ⊕ Operating Temperature -40C to +85C
- ⊕ Frequency Range 0-40GHz
- ⊕ VSWR <1.30
- ⊕ Dielectric withstanding Voltage >750V
- ⊕ Available with Extended PTFE



Part Number	Plug or Jack	Flange Mount Length	Mount Hole Distance	Socket Diameter
RF292A4JCCA	Jack	12.70mm	8.60mm	0.23mm
RF292A4JCCB	Jack	12.70mm	8.60mm	0.30mm
RF292A4JCCC	Jack	12.70mm	8.60mm	0.38mm
RF292A4JCCE	Jack	12.70mm	8.60mm	0.51mm
RF292A4JAAA	Jack	9.50mm	6.35mm	0.23mm
RF292A4JAAB	Jack	9.50mm	6.35mm	0.30mm
RF292A4JAAC	Jack	9.50mm	6.35mm	0.38mm
RF292A4JAAE	Jack	9.50mm	6.35mm	0.51mm
RF292A4PCCA	Plug	12.70mm	8.60mm	0.23mm
RF292A4PCCB	Plug	12.70mm	8.60mm	0.30mm
RF292A4PCCC	Plug	12.70mm	8.60mm	0.38mm
RF292A4PCCE	Plug	12.70mm	8.60mm	0.51mm
RF292A4PAAA	Plug	9.50mm	6.35mm	0.23mm
RF292A4PAAB	Plug	9.50mm	6.35mm	0.30mm
RF292A4PAAC	Plug	9.50mm	6.35mm	0.38mm
RF292A4PAAE	Plug	9.50mm	6.35mm	0.51mm

2.92mm Series Socket 2 Hole Flange



RF292A2JCCA

- ⊕ Max Voltage 250V
- ⊕ Operating Temperature -40C to +85C
- ⊕ Frequency Range 0-40GHz
- ⊕ VSWR <1.30
- ⊕ Dielectric withstanding Voltage >750V
- ⊕ Available with Extended PTFE



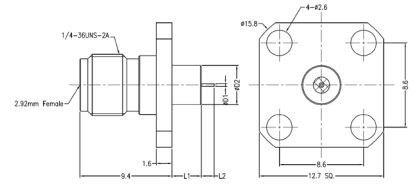
Part Number	Plug or Jack	Flange Mount Length	Mount Hole Distance	Socket Diameter
RF292A2JEGA	Jack	15.80mm	12.20mm	0.23mm
RF292A2JEGB	Jack	15.80mm	12.20mm	0.30mm
RF292A2JEGC	Jack	15.80mm	12.20mm	0.38mm
RF292A2JEGE	Jack	15.80mm	12.20mm	0.51mm
RF292A2JCCA	Jack	12.70mm	8.60mm	0.23mm
RF292A2JCCB	Jack	12.70mm	8.60mm	0.30mm
RF292A2JCCC	Jack	12.70mm	8.60mm	0.38mm
RF292A2JCCE	Jack	12.70mm	8.60mm	0.51mm
RF292A2JDFA	Jack	14.00mm	10.20mm	0.23mm
RF292A2JDFB	Jack	14.00mm	10.20mm	0.30mm
RF292A2JDFC	Jack	14.00mm	10.20mm	0.38mm
RF292A2JDFA	Jack	14.00mm	10.20mm	0.51mm
RF292A2PEGA	Plug	15.80mm	12.20mm	0.23mm
RF292A2PEGB	Plug	15.80mm	12.20mm	0.30mm
RF292A2PEGC	Plug	15.80mm	12.20mm	0.38mm
RF292A2PEGE	Plug	15.80mm	12.20mm	0.51mm
RF292A2PCEA	Plug	12.70mm	8.90mm	0.23mm
RF292A2PCEB	Plug	12.70mm	8.90mm	0.30mm
RF292A2PCEC	Plug	12.70mm	8.90mm	0.38mm
RF292A2PCEE	Plug	12.70mm	8.90mm	0.51mm

2.92mm Series Pin with Extended PTFE 4 Hole Flange



RF292A2JCCADGA

- Max Voltage 250V
- Operating Temperature -40C to +85C
- Frequency Range 0-40GHz
- VSWR <1.30
- Dielectric withstanding Voltage >750V
- Available with Extended PTFE
- Flange Mount Length 12.70mm
- Mount Hole Distance 8.60mm



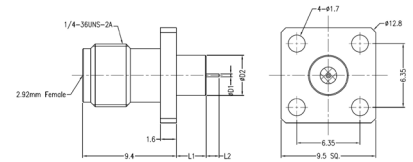
Part Number	Plug or Jack	Pin Diameter	Pin Length	Extended PTFE Dia	Extended PTFE Length
RF292A4JCCADGA	Jack	0.30mm	1.50mm	4.00mm	1.40mm
RF292A4JCCADGB	Jack	0.30mm	1.50mm	4.00mm	3.00mm
RF292A4JCCCGH	Jack	0.60mm	1.27mm	4.00mm	10.10mm
RF292A4JCCADAA	Jack	0.30mm	1.50mm	1.67mm	1.40mm
RF292A4JCCADAB	Jack	0.30mm	1.50mm	1.67mm	3.00mm

2.92mm Series Pin with Extended PTFE 4 Hole Flange



RF292A2JAAADGA

- Max Voltage 250V
- Operating Temperature -40C to +85C
- Frequency Range 0-40GHz
- VSWR <1.30
- Dielectric withstanding Voltage >750V
- Available with Extended PTFE
- Flange Mount Length 9.50mm
- Mount Hole Distance 6.35 mm



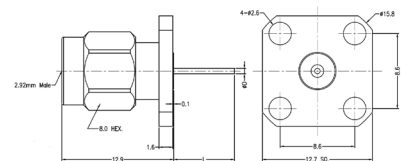
Part Number	Plug or Jack	Pin Diameter	Pin Length	Extended PTFE Dia	Extended PTFE Length
RF292A4JAAADGA	Jack	0.30mm	1.50mm	4.00mm	1.40mm
RF292A4JAAADGB	Jack	0.30mm	1.50mm	4.00mm	3.00mm
RF292A4JAAACGH	Jack	0.60mm	1.27mm	4.00mm	10.10mm
RF292A4JAAADAA	Jack	0.30mm	1.50mm	1.67mm	1.40mm
RF292A4JAAADAB	Jack	0.30mm	1.50mm	1.67mm	3.00mm

2.92mm Series Pin without Extended PTFE 4 Hole Flange



RF292A4PCCDK

- Max Voltage 250V
- Operating Temperature -40C to +85C
- Frequency Range 0-40GHz
- VSWR <1.30
- Dielectric withstanding Voltage >750V
- Available with Extended PTFE



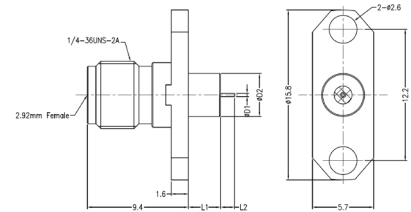
Part Number	Plug or Jack	Flange Mount Length	Pin Diameter	Pin Length
RF292A4JCCAL	Jack	12.70mm	0.30mm	7.00mm
RF292A4JCCDK	Jack	12.70mm	0.64mm	6.84mm
RF292A4JCCDP	Jack	12.70mm	0.64mm	10.92mm
RF292A4JCCES	Jack	12.70mm	0.75mm	30.00mm
RF292A4JAAAL	Jack	9.50mm	0.30mm	7.00mm
RF292A4JAADK	Jack	9.50mm	0.64mm	6.84mm
RF292A4JAADP	Jack	9.50mm	0.64mm	10.92mm
RF292A4JAAES	Jack	9.50mm	0.75mm	30.00mm
RF292A4PCCDK	Plug	12.70mm	0.64mm	6.84mm
RF292A4PCCDP	Plug	12.70mm	0.64mm	10.92mm
RF292A4PAADK	Plug	9.50mm	0.64mm	6.84mm
RF292A4PAADP	Plug	9.50mm	0.64mm	10.92mm

2.92mm Series Pin with Extended PTFE 2 Hole Flange



RF292A2JEGADGA

- ⊕ Max Voltage 250V
- ⊕ Operating Temperature -40C to +85C
- ⊕ Frequency Range 0-40GHz
- ⊕ VSWR <1.30
- ⊕ Dielectric withstanding Voltage >750V
- ⊕ Available with Extended PTFE
- ⊕ Flange Mount Length 15.80mm
- ⊕ Mount Hole Distance 12.20mm



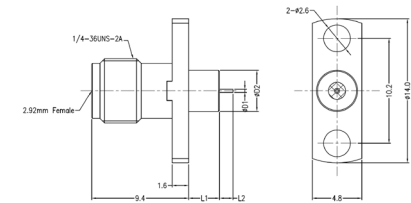
Part Number	Plug or Jack	Pin Diameter	Pin Length	Extended PTFE Dia	Extended PTFE Length
RF292A2JEGADGA	Jack	0.30mm	1.50mm	4.00mm	1.40mm
RF292A2JEGADGB	Jack	0.30mm	1.50mm	4.00mm	3.00mm
RF292A2JEGCCGH	Jack	0.60mm	1.27mm	4.00mm	10.10mm
RF292A2JEGADAA	Jack	0.30mm	1.50mm	1.67mm	1.40mm
RF292A2JEGADAB	Jack	0.30mm	1.50mm	1.67mm	3.00mm

2.92mm Series Pin with Extended PTFE 2 Hole Flange



RF292A2JDFADGA

- ⊕ Max Voltage 250V
- ⊕ Operating Temperature -40C to +85C
- ⊕ Frequency Range 0-40GHz
- ⊕ VSWR <1.30
- ⊕ Dielectric withstanding Voltage >750V
- ⊕ Available with Extended PTFE
- ⊕ Flange Mount Length 14.00mm
- ⊕ Mount Hole Distance 10.20mm



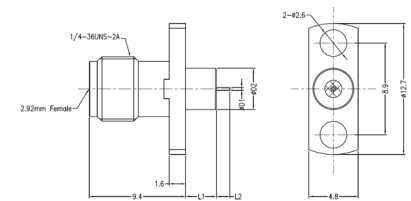
Part Number	Plug or Jack	Pin Diameter	Pin Length	Extended PTFE Dia	Extended PTFE Length
RF292A2JDFADGA	Jack	0.30mm	1.50mm	4.00mm	1.40mm
RF292A2JDFADGB	Jack	0.30mm	1.50mm	4.00mm	3.00mm
RF292A2JDFCCGH	Jack	0.60mm	1.27mm	4.00mm	10.10mm
RF292A2JDFADAA	Jack	0.30mm	1.50mm	1.67mm	1.40mm
RF292A2JDFADAB	Jack	0.30mm	1.50mm	1.67mm	3.00mm

2.92mm Series Pin with Extended PTFE 2 Hole Flange



RF292A2JCEADGA

- ⊕ Max Voltage 250V
- ⊕ Operating Temperature -40C to +85C
- ⊕ Frequency Range 0-40GHz
- ⊕ VSWR <1.30
- ⊕ Dielectric withstanding Voltage >750V
- ⊕ Available with Extended PTFE
- ⊕ Flange Mount Length 12.70mm
- ⊕ Mount Hole Distance 8.90mm



Part Number	Plug or Jack	Pin Diameter	Pin Length	Extended PTFE Dia	Extended PTFE Length
RF292A2JCEADGA	Jack	0.30mm	1.50mm	4.00mm	1.40mm
RF292A2JCEADGB	Jack	0.30mm	1.50mm	4.00mm	3.00mm
RF292A2JCECCGH	Jack	0.60mm	1.27mm	4.00mm	10.10mm
RF292A2JCEADAA	Jack	0.30mm	1.50mm	1.67mm	1.40mm
RF292A2JCEADAB	Jack	0.30mm	1.50mm	1.67mm	3.00mm

2.92mm Series Pin with Extended PTFE 2 Hole Flange



RF292A2JCCADGA

- ⊕ Max Voltage 250V
- ⊕ Operating Temperature -40C to +85C
- ⊕ Frequency Range 0-40GHz
- ⊕ VSWR <1.30
- ⊕ Dielectric withstanding Voltage >750V
- ⊕ Available with Extended PTFE
- ⊕ Flange Mount Length 12.70mm
- ⊕ Mount Hole Distance 8.60mm



Part Number	Plug or Jack	Pin Diameter	Pin Length	Extended PTFE Dia	Extended PTFE Length
RF292A2JCCADGA	Jack	0.30mm	1.50mm	4.00mm	1.40mm
RF292A2JCCADGB	Jack	0.30mm	1.50mm	4.00mm	3.00mm
RF292A2JCCCGH	Jack	0.60mm	1.27mm	4.00mm	10.10mm
RF292A2JCCADAA	Jack	0.30mm	1.50mm	1.67mm	1.40mm
RF292A2JCCADAB	Jack	0.30mm	1.50mm	1.67mm	3.00mm

2.92mm Series Pin without Extended PTFE 2 Hole Flange



RF292A2JEGAL

- ⊕ Max Voltage 250V
- ⊕ Operating Temperature -40C to +85C
- ⊕ Frequency Range 0-40GHz
- ⊕ VSWR <1.30
- ⊕ Dielectric withstanding Voltage >750V
- ⊕ Available with Extended PTFE



Part Number	Plug or Jack	Flange Mount Length	Mount Hole Distance	Pin Diameter	Pin Length
RF292A2JEGAL	Jack	15.80mm	12.20mm	0.30mm	7.00mm
RF292A2JEGDK	Jack	15.80mm	12.20mm	0.64mm	6.84mm
RF292A2JEGDP	Jack	15.80mm	12.20mm	0.64mm	10.92mm
RF292A2JEGES	Jack	15.80mm	12.20mm	0.75mm	30.00mm
RF292A2JCCAL	Jack	12.70mm	8.60mm	0.30mm	7.00mm
RF292A2JCCDK	Jack	12.70mm	8.60mm	0.64mm	6.84mm
RF292A2JCCDP	Jack	12.70mm	8.60mm	0.64mm	10.92mm
RF292A2JCCES	Jack	12.70mm	8.60mm	0.75mm	30.00mm
RF292A2JDFAL	Jack	14.00mm	10.20mm	0.30mm	7.00mm
RF292A2JDFDK	Jack	14.00mm	10.20mm	0.64mm	6.84mm
RF292A2JDFDP	Jack	14.00mm	10.20mm	0.64mm	10.92mm
RF292A2JDFES	Jack	14.00mm	10.20mm	0.75mm	30.00mm
RF292A2JCEAL	Jack	12.70mm	8.90mm	0.30mm	7.00mm
RF292A2JCEDK	Jack	12.70mm	8.90mm	0.64mm	6.84mm
RF292A2JCEDP	Jack	12.70mm	8.90mm	0.64mm	10.92mm
RF292A2JCEES	Jack	12.70mm	8.90mm	0.75mm	30.00mm
RF292A2PEGDK	Plug	15.80mm	12.20mm	0.64mm	6.84mm
RF292A2PEGDP	Plug	15.80mm	12.20mm	0.64mm	10.92mm
RF292A2PDFDK	Plug	14.00mm	10.20mm	0.64mm	6.84mm
RF292A2PDFDP	Plug	14.00mm	10.20mm	0.64mm	10.92mm
RF292A2PCEDK	Plug	12.70mm	8.90mm	0.64mm	6.84mm
RF292A2PCEDP	Plug	12.70mm	8.90mm	0.64mm	10.92mm

2.92mm Series Edge Launch Connector



RF292CP

- ⊕ Max Voltage 250V
- ⊕ Operating Temperature -40C to +85C
- ⊕ Frequency Range 0-40GHz
- ⊕ VSWR <1.30
- ⊕ Dielectric withstanding Voltage >750V
- ⊕ Only available in Brass with Gold Plating



Part Number	Plug or Jack	PCB Thickness
RF292CPA	Plug	0.61mm
RF292CPB	Plug	0.87mm
RF292CPC	Plug	1.78mm
RF292CPD	Plug	1.88mm

2.92mm Series End Launch Connector



RF292EJ

- ⊕ Max Voltage 250V
- ⊕ Operating Temperature -55C to +125C
- ⊕ Frequency Range 0-40GHz
- ⊕ VSWR <1.50
- ⊕ Dielectric withstanding Voltage >750V



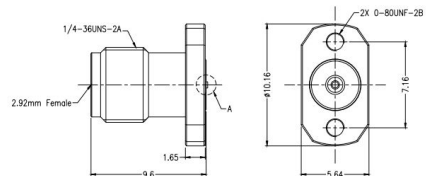
Part Number	Plug or Jack
RF292EJ	Jack
RF292EP	Plug

2.92mm Series Compression Mount Connector



RF292DJB

- ⊕ Max Voltage 250V
- ⊕ Operating Temperature -55C to +125C
- ⊕ Frequency Range 0-40GHz
- ⊕ VSWR <1.25
- ⊕ Dielectric withstanding Voltage >750V



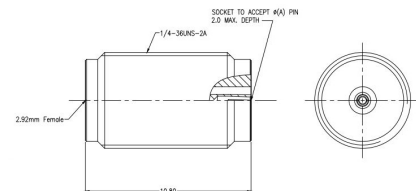
Part Number	Plug or Jack	Stripline or Microstrip Line
RF292DJB	Jack	Stripline
RF292DJA	Jack	Microstrip Line

2.92mm Series Straight Connector



RF292AJA

- ⊕ Max Voltage 250V
- ⊕ Operating Temperature -65C to +165C
- ⊕ Frequency Range 0-40GHz
- ⊕ VSWR <1.30
- ⊕ Dielectric withstanding Voltage >750V



Part Number	Plug or Jack	Flange Mount Length	STA 142, UFB, GORE, 1401
RF292AJA	Jack	0.23mm	-
RF292AJB	Jack	0.30mm	-
RF292AJC	Jack	0.38mm	-
RF292AJE	Jack	0.51mm	-
RF292APG	Plug	-	Yes
RF292AJG	Jack	-	Yes