

Our RF Adapter Series offers Straight series connectors in: 1.85mm, 2.40mm, 2.92mm, 3.50mm, N Type, SMA, TNC, BNC, APC-7, Flange Mount and Right Angle.

The RF Adapters are used to transfer signals from one connector interface to another. They are RoHS compliance and manufactured from Stainless Steel with Beryllium Copper contacts.



Key Features:

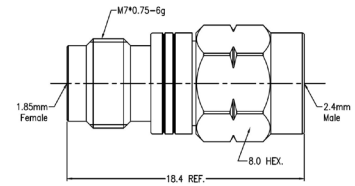
- ⊕ 50-ohm Impedance
- ⊕ Insulation resistance >5000MΩ
- ⊕ Durability >500 Cycles
- ⊕ Available in Male and Female Threads
- ⊕ Available in Plug or Jack
- ⊕ Beryllium Copper Contact Pin
- ⊕ Body Material available in Stainless Steel Passivation

1.85mm Adapters Series Straight



RFAA185J240P

- ⊕ Max Voltage 150V
- ⊕ Operating Temperature -40C to +65C
- ⊕ VSWR <1.25
- ⊕ Dielectric withstanding Voltage >500V
- ⊕ Frequency Range 0-65GHz



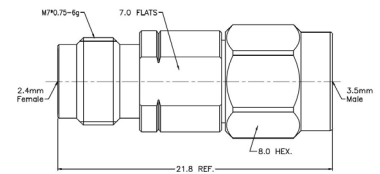
| Part Number | End 1 | Plug or Jack | End 2 | Plug or Jack |
|--------------|-------|--------------|-------|--------------|
| RFAA185J185J | 185 | Jack | 185 | Jack |
| RFAA185P185J | 185 | Plug | 185 | Jack |
| RFAA185P185P | 185 | Plug | 185 | Plug |
| RFAA185J240J | 185 | Jack | 240 | Jack |
| RFAA185P240P | 185 | Plug | 240 | Plug |
| RFAA185P240J | 185 | Plug | 240 | Jack |
| RFAA185J240P | 185 | Jack | 240 | Plug |
| RFAA185J292J | 185 | Jack | 292 | Jack |
| RFAA185J292P | 185 | Jack | 292 | Plug |
| RFAA185P292J | 185 | Plug | 292 | Jack |
| RFAA185P292P | 185 | Plug | 292 | Plug |
| RFAA185J350J | 185 | Jack | 350 | Jack |
| RFAA185J350P | 185 | Jack | 350 | Plug |
| RFAA185P350J | 185 | Plug | 350 | Jack |
| RFAA185P350P | 185 | Plug | 350 | Plug |

2.40mm Adapter Series Straight



RFAA240J350P

- ⊕ Max Voltage 150V
- ⊕ Operating Temperature -40C to +85C
- ⊕ VSWR <1.20
- ⊕ Dielectric withstanding Voltage >500V
- ⊕ Frequency Range 0-50GHz



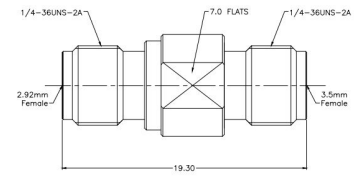
| Part Number | End 1 | Plug or Jack | End 2 | Plug or Jack |
|--------------|-------|--------------|-------|--------------|
| RFAA240J240J | 240 | Jack | 240 | Jack |
| RFAA240P240P | 240 | Plug | 240 | Plug |
| RFAA240P240J | 240 | Plug | 240 | Jack |
| RFAA240J292J | 240 | Jack | 292 | Jack |
| RFAA240J292P | 240 | Jack | 292 | Plug |
| RFAA240P292J | 240 | Plug | 292 | Jack |
| RFAA240P292P | 240 | Plug | 292 | Plug |
| RFAA240P350J | 240 | Plug | 350 | Jack |
| RFAA240J350P | 240 | Jack | 350 | Plug |
| RFAA240P350J | 240 | Plug | 350 | Jack |
| RFAA240P350P | 240 | Plug | 350 | Plug |

2.92mm Adapter Series Straight



RFAA292J292J

- Max Voltage 250V
- Operating Temperature -40C to +85C
- VSWR <1.20
- Dielectric withstanding Voltage >750V
- Frequency Range 0-40GHz



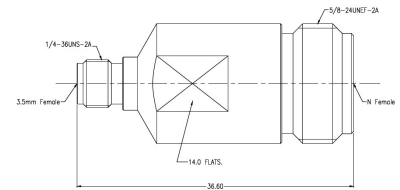
| Part Number | End 1 | Plug or Jack | End 2 | Plug or Jack |
|--------------|-------|--------------|-------|--------------|
| RFAA292J292P | 292 | Jack | 292 | Plug |
| RFAA292J292J | 292 | Jack | 292 | Jack |
| RFAA292P292P | 292 | Plug | 292 | Plug |
| RFAA292J350J | 292 | Jack | 350 | Jack |
| RFAA292J350P | 292 | Jack | 350 | Plug |
| RFAA292P350J | 292 | Plug | 350 | Jack |
| RFAA292P350P | 292 | Plug | 350 | Plug |

3.50mm Adapter Series Straight



RFAA350JNJ

- Max Voltage 250V
- Operating Temperature -40C to +85C
- VSWR <1.15
- Dielectric withstanding Voltage >750V
- Frequency Range 0-33GHz



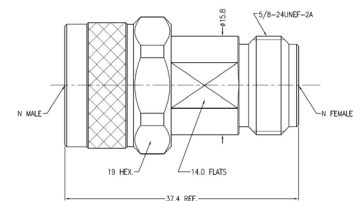
| Part Number | End 1 | Plug or Jack | End 2 | Plug or Jack |
|--------------|-------|--------------|-------|--------------|
| RFAA350J350J | 350 | Jack | 350 | Jack |
| RFAA350J350P | 350 | Jack | 350 | Plug |
| RFAA350P350P | 350 | Plug | 350 | Plug |
| RFAA350JNJ | 350 | Jack | N | Jack |
| RFAA350JNP | 350 | Jack | N | Plug |
| RFAA350PNJ | 350 | Plug | N | Jack |
| RFAA350PNP | 350 | Plug | N | Plug |

N Type Adapter Series Straight



RFAANPNJ

- Max Voltage 500V
- Operating Temperature -40C to +85C
- VSWR <1.15
- Dielectric withstanding Voltage >1500V
- Frequency Range 0-18GHz



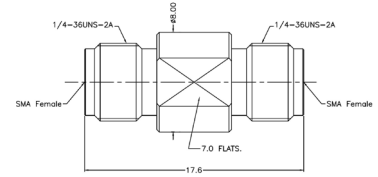
| Part Number | End 1 | Plug or Jack | End 2 | Plug or Jack |
|-------------|-------|--------------|-------|--------------|
| RFAANJNJ | N | Jack | N | Jack |
| RFAANPNJ | N | Plug | N | Jack |
| RFAANPNP | N | Plug | N | Plug |

SMA Adapter Series Straight



RFAASMAJSMAJ

- Max Voltage 335V
- Operating Temperature -65C to +165C
- VSWR <1.15
- Dielectric withstanding Voltage >750
- Frequency Range 0-26.5GHz



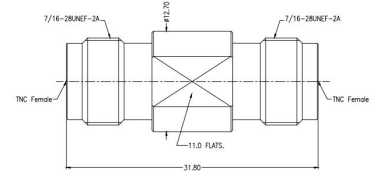
| Part Number | End 1 | Plug or Jack | End 2 | Plug or Jack |
|--------------|-------|--------------|-------|--------------|
| RFAASMAJSMAJ | SMA | Jack | SMA | Jack |
| RFAASMAPSMAJ | SMA | Plug | SMA | Jack |
| RFAASMAPSMAP | SMA | Plug | SMA | Plug |
| RFAASMAJNJ | SMA | Jack | N | Jack |
| RFAASMAJNP | SMA | Jack | N | Plug |
| RFAASMAPNP | SMA | Plug | N | Plug |
| RFAASMAPNJ | SMA | Plug | N | Jack |

TNC Adapter Series Straight



RFAATNCJTNCJ

- Max Voltage 500V
- Operating Temperature -65C to +165C
- VSWR <1.15
- Dielectric withstanding Voltage >1500V
- Frequency Range 0-11GHz



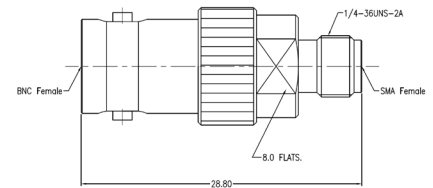
| Part Number | End 1 | Plug or Jack | End 2 | Plug or Jack |
|--------------|-------|--------------|-------|--------------|
| RFAATNCJTNCJ | TNC | Jack | TNC | Jack |
| RFAATNCJTNCJ | TNC | Jack | TNC | Plug |
| RFAATNCPTNCJ | TNC | Plug | TNC | Plug |
| RFAATNCJNP | TNC | Plug | N | Jack |

BNC Adapter Series Straight



RFAABNCJSMAJ

- Max Voltage 335V
- Operating Temperature -65C to +165C
- VSWR <1.15
- Dielectric withstanding Voltage >750V
- Frequency Range 0-8GHz



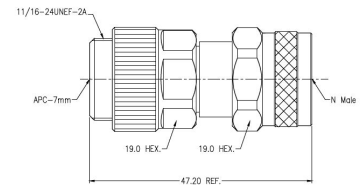
| Part Number | End 1 | Plug or Jack | End 2 | Plug or Jack |
|--------------|-------|--------------|-------|--------------|
| RFAABNCJSMAJ | BNC | Jack | SMA | Jack |
| RFAABNCPSMAJ | BNC | Plug | SMA | Jack |
| RFAABNCJSMAP | BNC | Jack | SMA | Plug |
| RFAABNCPSMAP | BNC | Plug | SMA | Plug |

APC-7 Adapter Series Straight



RFAAAPC7NP

- Max Voltage 1000V
- Operating Temperature -40C to +85C
- VSWR <1.15
- Dielectric withstanding Voltage >2500V
- Frequency Range 0-18GHz



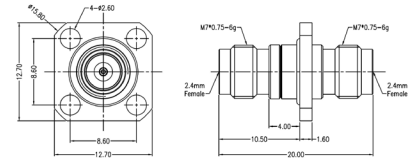
| Part Number | End 1 | Plug or Jack | End 2 | Plug or Jack |
|-------------|-------|--------------|-------|--------------|
| RFAAAPC7NJ | APC7 | - | N | Jack |
| RFAAAPC7NP | APC7 | - | N | Plug |

Adapter Series Flange Mount
2.40mm Adapter



RFAA4240J240J

- Max Voltage 150V
- Operating Temperature -40C to +85C
- VSWR <1.20
- Dielectric withstanding Voltage >500V
- Frequency Range 0-50GHz



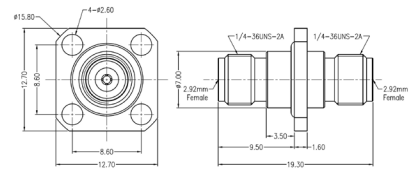
| Part Number | End 1 | Plug or Jack | End 2 | Plug or Jack |
|---------------|-------|--------------|-------|--------------|
| RFAA4240J240J | 240 | Jack | 240 | Jack |

2.92mm Adapter Series Flange Mount



RFAA4292J292J

- Max Voltage 250V
- Operating Temperature -40C to +85C
- VSWR <1.20
- Dielectric withstanding Voltage >750V
- Frequency Range 0-40GHz



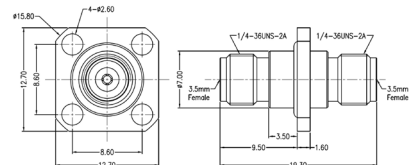
| Part Number | End 1 | Plug or Jack | End 2 | Plug or Jack |
|---------------|-------|--------------|-------|--------------|
| RFAA4292J292J | 240 | Jack | 240 | Jack |

3.50mm Adapter Series Flange Mount



RFAA4350J350J

- Max Voltage 335V
- Operating Temperature -40C to +85C
- VSWR <1.20
- Dielectric withstanding Voltage >750V
- Frequency Range 0-33GHz



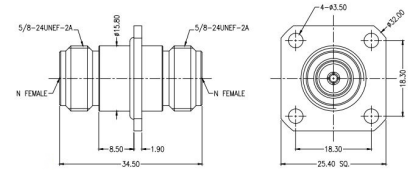
| Part Number | End 1 | Plug or Jack | End 2 | Plug or Jack |
|---------------|-------|--------------|-------|--------------|
| RFAA4350J350J | 350 | Jack | 350 | Jack |

N Type Adapter Series Flange Mount



RFAA4NJNI

- Max Voltage 500V
- Operating Temperature -40C to +85C
- VSWR <1.15
- Dielectric withstanding Voltage >1500V
- Frequency Range 0-18GHz



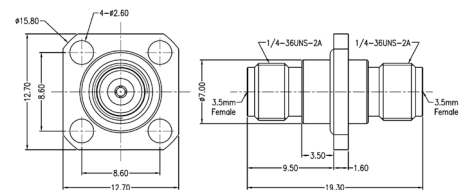
| Part Number | End 1 | Plug or Jack | End 2 | Plug or Jack |
|-------------|-------|--------------|-------|--------------|
| RFAA4NJNI | N | Jack | N | Jack |
| RFAA4NJNI | N | Jack | N | Plug |

SMA Adapter Series Flange Mount



RFAA4350J350J

- Max Voltage 335V
- Operating Temperature -65C to +165C
- VSWR <1.15
- Dielectric withstanding Voltage >750V
- Frequency Range 0-26.5GHz



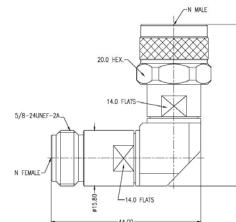
| Part Number | End 1 | Plug or Jack | End 2 | Plug or Jack | SMA or N Side |
|---------------|-------|--------------|-------|--------------|---------------|
| RFAA4SMAJSMAJ | SMA | Jack | SMA | Jack | - |
| RFAA4SMAJSMAJ | SMA | Jack | SMA | Jack | - |
| RFAA4SMAPMAJ | SMA | Plug | SMA | Jack | - |
| RFAA4SMAPSMAP | SMA | Plug | SMA | Plug | - |
| RFAA4SMAJNJA | SMA | Jack | N | Jack | SMA Side |
| RFAA4SMAJNJB | SMA | Jack | N | Jack | N Side |
| RFAA4SMAPNJA | SMA | Plug | N | Jack | SMA Side |
| RFAA4SMAPNJB | SMA | Plug | N | Jack | N Side |
| RFAA4SMAPNP | SMA | Plug | N | Plug | - |

N Type Adapter Series Right Angle



RFABNJNP

- Max Voltage 500V
- Operating Temperature -40C to +85C
- VSWR <1.25
- Dielectric withstanding Voltage >1500V
- Frequency Range 0-18GHz



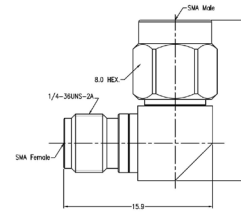
| Part Number | End 1 | Plug or Jack | End 2 | Plug or Jack |
|-------------|-------|--------------|-------|--------------|
| RFABNJNI | N | Jack | N | Jack |
| RFABNJNP | N | Jack | N | Plug |
| RFABNPNP | N | Plug | N | Plug |

SMA Adapter Series Right Angle



RFABSMAJSMAP

- ⬡ Max Voltage 335V
- ⬡ Operating Temperature -65C to +165C
- ⬡ VSWR <1.25
- ⬡ Dielectric withstanding Voltage >750V
- ⬡ Frequency Range 0-26.5GHz



| Part Number | End 1 | Plug or Jack | End 2 | Plug or Jack |
|--------------|-------|--------------|-------|--------------|
| RFABSMAJSMAJ | SMA | Jack | SMA | Jack |
| RFABSMAJSMAP | SMA | Jack | SMA | Plug |
| RFABSMAJSMAP | SMA | Plug | SMA | Plug |