

Our RF Adapter Series offers Straight series connectors in: 1.85mm, 2.40mm, 2.92mm, 3.50mm, N Type, SMA, TNC, BNC, APC-7, Flange Mount and Right Angle.

The RF Adapters are used to transfer signals from one connector interface to another. They are RoHS compliance and manufactured from Stainless Steel with Beryllium Copper contacts.



Key Features:

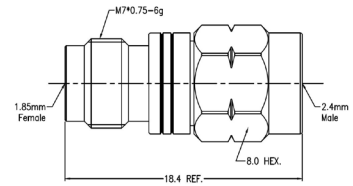
- ⊕ 50-ohm Impedance
- ⊕ Insulation resistance >5000MΩ
- ⊕ Durability >500 Cycles
- ⊕ Available in Male and Female Threads
- ⊕ Available in Plug or Jack
- ⊕ Beryllium Copper Contact Pin
- ⊕ Body Material available in Stainless Steel Passivation

1.85mm Adapters Series Straight



RFAA185J240P

- ⊕ Max Voltage 150V
- ⊕ Operating Temperature -40C to +65C
- ⊕ VSWR <1.25
- ⊕ Dielectric withstanding Voltage >500V
- ⊕ Frequency Range 0-65GHz



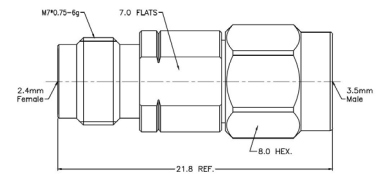
Part Number	End 1	Plug or Jack	End 2	Plug or Jack
RFAA185J185J	185	Jack	185	Jack
RFAA185P185J	185	Plug	185	Jack
RFAA185P185P	185	Plug	185	Plug
RFAA185J240J	185	Jack	240	Jack
RFAA185P240P	185	Plug	240	Plug
RFAA185P240J	185	Plug	240	Jack
RFAA185J240P	185	Jack	240	Plug
RFAA185J292J	185	Jack	292	Jack
RFAA185J292P	185	Jack	292	Plug
RFAA185P292J	185	Plug	292	Jack
RFAA185P292P	185	Plug	292	Plug
RFAA185J350J	185	Jack	350	Jack
RFAA185J350P	185	Jack	350	Plug
RFAA185P350J	185	Plug	350	Jack
RFAA185P350P	185	Plug	350	Plug

2.40mm Adapter Series Straight



RFAA240J350P

- ⊕ Max Voltage 150V
- ⊕ Operating Temperature -40C to +85C
- ⊕ VSWR <1.20
- ⊕ Dielectric withstanding Voltage >500V
- ⊕ Frequency Range 0-50GHz



Part Number	End 1	Plug or Jack	End 2	Plug or Jack
RFAA240J240J	240	Jack	240	Jack
RFAA240P240P	240	Plug	240	Plug
RFAA240P240J	240	Plug	240	Jack
RFAA240J292J	240	Jack	292	Jack
RFAA240J292P	240	Jack	292	Plug
RFAA240P292J	240	Plug	292	Jack
RFAA240P292P	240	Plug	292	Plug
RFAA240P350J	240	Plug	350	Jack
RFAA240J350P	240	Jack	350	Plug
RFAA240P350J	240	Plug	350	Jack
RFAA240P350P	240	Plug	350	Plug

2.92mm Adapter Series Straight



RFAA292J292J

- Max Voltage 250V
- Operating Temperature -40C to +85C
- VSWR <1.20
- Dielectric withstanding Voltage >750V
- Frequency Range 0-40GHz



Part Number	End 1	Plug or Jack	End 2	Plug or Jack
RFAA292J292P	292	Jack	292	Plug
RFAA292J292J	292	Jack	292	Jack
RFAA292P292P	292	Plug	292	Plug
RFAA292J350J	292	Jack	350	Jack
RFAA292J350P	292	Jack	350	Plug
RFAA292P350J	292	Plug	350	Jack
RFAA292P350P	292	Plug	350	Plug

3.50mm Adapter Series Straight



RFAA350JNJ

- Max Voltage 250V
- Operating Temperature -40C to +85C
- VSWR <1.15
- Dielectric withstanding Voltage >750V
- Frequency Range 0-33GHz



Part Number	End 1	Plug or Jack	End 2	Plug or Jack
RFAA350J350J	350	Jack	350	Jack
RFAA350J350P	350	Jack	350	Plug
RFAA350P350P	350	Plug	350	Plug
RFAA350JNJ	350	Jack	N	Jack
RFAA350JNP	350	Jack	N	Plug
RFAA350PNJ	350	Plug	N	Jack
RFAA350PNP	350	Plug	N	Plug

N Type Adapter Series Straight



RFAANPNJ

- Max Voltage 500V
- Operating Temperature -40C to +85C
- VSWR <1.15
- Dielectric withstanding Voltage >1500V
- Frequency Range 0-18GHz



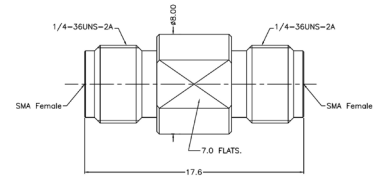
Part Number	End 1	Plug or Jack	End 2	Plug or Jack
RFAANJNJ	N	Jack	N	Jack
RFAANPNJ	N	Plug	N	Jack
RFAANPNP	N	Plug	N	Plug

SMA Adapter Series Straight



RFAASMAJSMAJ

- ⊕ Max Voltage 335V
- ⊕ Operating Temperature -65C to +165C
- ⊕ VSWR <1.15
- ⊕ Dielectric withstanding Voltage >750
- ⊕ Frequency Range 0-26.5GHz



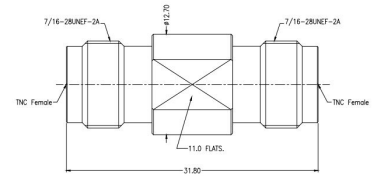
Part Number	End 1	Plug or Jack	End 2	Plug or Jack
RFAASMAJSMAJ	SMA	Jack	SMA	Jack
RFAASMAPSMAJ	SMA	Plug	SMA	Jack
RFAASMAPSMAP	SMA	Plug	SMA	Plug
RFAASMAJNJ	SMA	Jack	N	Jack
RFAASMAJNP	SMA	Jack	N	Plug
RFAASMAPNP	SMA	Plug	N	Plug
RFAASMAPNJ	SMA	Plug	N	Jack

TNC Adapter Series Straight



RFAATNCJTNCJ

- ⊕ Max Voltage 500V
- ⊕ Operating Temperature -65C to +165C
- ⊕ VSWR <1.15
- ⊕ Dielectric withstanding Voltage >1500V
- ⊕ Frequency Range 0-11GHz



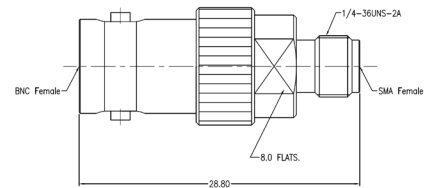
Part Number	End 1	Plug or Jack	End 2	Plug or Jack
RFAATNCJTNCJ	TNC	Jack	TNC	Jack
RFAATNCJTNCJ	TNC	Jack	TNC	Plug
RFAATNCPTNCP	TNC	Plug	TNC	Plug
RFAATNCPNJ	TNC	Plug	N	Jack

BNC Adapter Series Straight



RFAABNCJSMAJ

- ⊕ Max Voltage 335V
- ⊕ Operating Temperature -65C to +165C
- ⊕ VSWR <1.15
- ⊕ Dielectric withstanding Voltage >750V
- ⊕ Frequency Range 0-8GHz



Part Number	End 1	Plug or Jack	End 2	Plug or Jack
RFAABNCJSMAJ	BNC	Jack	SMA	Jack
RFAABNCPSMAJ	BNC	Plug	SMA	Jack
RFAABNCJSMAP	BNC	Jack	SMA	Plug
RFAABNCPSMAP	BNC	Plug	SMA	Plug

APC-7 Adapter Series Straight



RFAAAPC7NP

- Max Voltage 1000V
- Operating Temperature -40C to +85C
- VSWR <1.15
- Dielectric withstanding Voltage >2500V
- Frequency Range 0-18GHz



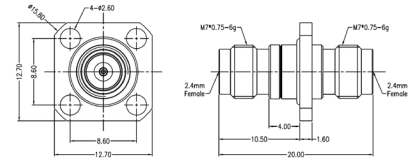
Part Number	End 1	Plug or Jack	End 2	Plug or Jack
RFAAAPC7NJ	APC7	-	N	Jack
RFAAAPC7NP	APC7	-	N	Plug

Adapter Series Flange Mount
2.40mm Adapter



RFAA4240J240J

- Max Voltage 150V
- Operating Temperature -40C to +85C
- VSWR <1.20
- Dielectric withstanding Voltage >500V
- Frequency Range 0-50GHz



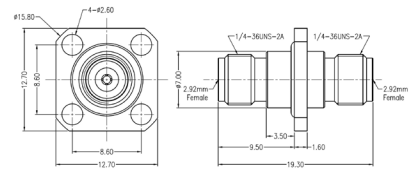
Part Number	End 1	Plug or Jack	End 2	Plug or Jack
RFAA4240J240J	240	Jack	240	Jack

2.92mm Adapter Series Flange Mount



RFAA4292J292J

- Max Voltage 250V
- Operating Temperature -40C to +85C
- VSWR <1.20
- Dielectric withstanding Voltage >750V
- Frequency Range 0-40GHz



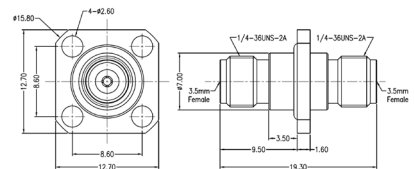
Part Number	End 1	Plug or Jack	End 2	Plug or Jack
RFAA4292J292J	240	Jack	240	Jack

3.50mm Adapter Series Flange Mount



RFAA4350J350J

- Max Voltage 335V
- Operating Temperature -40C to +85C
- VSWR <1.20
- Dielectric withstanding Voltage >750V
- Frequency Range 0-33GHz



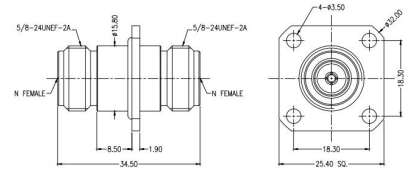
Part Number	End 1	Plug or Jack	End 2	Plug or Jack
RFAA4350J350J	350	Jack	350	Jack

N Type Adapter Series Flange Mount



RFAA4NJNI

- Max Voltage 500V
- Operating Temperature -40C to +85C
- VSWR <1.15
- Dielectric withstanding Voltage >1500V
- Frequency Range 0-18GHz



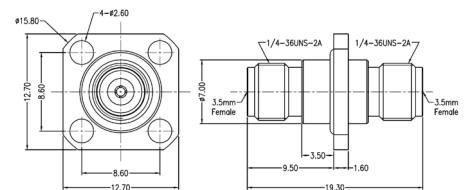
Part Number	End 1	Plug or Jack	End 2	Plug or Jack
RFAA4NJNI	N	Jack	N	Jack
RFAA4NJNI	N	Jack	N	Plug

SMA Adapter Series Flange Mount



RFAA4350J350J

- Max Voltage 335V
- Operating Temperature -65C to +165C
- VSWR <1.15
- Dielectric withstanding Voltage >750V
- Frequency Range 0-26.5GHz



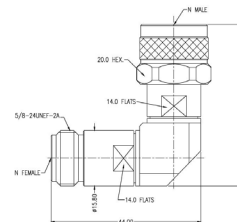
Part Number	End 1	Plug or Jack	End 2	Plug or Jack	SMA or N Side
RFAA4SMAJSMAJ	SMA	Jack	SMA	Jack	-
RFAA4SMAJSMAJ	SMA	Jack	SMA	Jack	-
RFAA4SMAPMAJ	SMA	Plug	SMA	Jack	-
RFAA4SMAPSMAP	SMA	Plug	SMA	Plug	-
RFAA4SMAJNJA	SMA	Jack	N	Jack	SMA Side
RFAA4SMAJNJB	SMA	Jack	N	Jack	N Side
RFAA4SMAPNJA	SMA	Plug	N	Jack	SMA Side
RFAA4SMAPNJB	SMA	Plug	N	Jack	N Side
RFAA4SMAPNP	SMA	Plug	N	Plug	-

N Type Adapter Series Right Angle



RFABNJNI

- Max Voltage 500V
- Operating Temperature -40C to +85C
- VSWR <1.25
- Dielectric withstanding Voltage >1500V
- Frequency Range 0-18GHz



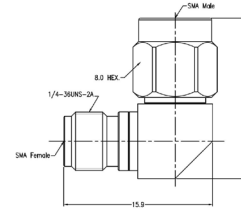
Part Number	End 1	Plug or Jack	End 2	Plug or Jack
RFABNJNI	N	Jack	N	Jack
RFABNJNI	N	Jack	N	Plug
RFABNJNI	N	Plug	N	Plug

SMA Adapter Series Right Angle



RFABSMAJSMAP

- ⬡ Max Voltage 335V
- ⬡ Operating Temperature -65C to +165C
- ⬡ VSWR <1.25
- ⬡ Dielectric withstanding Voltage >750V
- ⬡ Frequency Range 0-26.5GHz



Part Number	End 1	Plug or Jack	End 2	Plug or Jack
RFABSMAJSMAJ	SMA	Jack	SMA	Jack
RFABSMAJSMAP	SMA	Jack	SMA	Plug
RFABSMAJSMAP	SMA	Plug	SMA	Plug