

RK10J With Knob Type

Dimensions

Unit:mm

No.	Photo	Style	PC board mounting hole dimensions (Viewed from mounting side)
2	<p>RK10J1 □ R Reflow</p>		<p>Center of knob</p> <p>Shaded area: Solder land</p>

Circuit Diagram

Single-unit	Dual-unit	Dual-unit resistance taper 15C

With Knob Type / Other Specifications

In addition to the Product Line, we accommodate the following specifications. Combinations not included in the Product Line are treated as semi-standard products.

Total Resistance Variety

Total resistance (k Ω)	10	20	50	100

Resistance Taper

Resistance taper	15A	1B	3B	15C

Terminal Layout

	Resistance taper A or B		Resistance taper C	
	Single-unit	Dual-unit	Single-unit	Dual-unit
10mm Single-unit/ Dual-unit RK10J1 □ E (Manual)				
10mm Single-unit/ Dual-unit RK10J1 □ R (Reflow)				

Refer to P.340 for ordering products not listed.

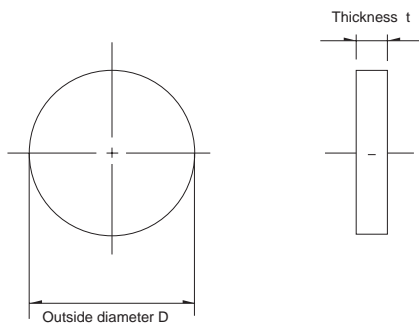
With Knob Type / Other Specifications

In addition to the Product Line, we accommodate the following specifications. Combinations not included in the Product Line are treated as semi-standard products.

■ Mounting Plate Types and Terminal Types

RK10J1 □ E (Manual)		Unit:mm
Terminal length : 2.0	Terminal length : 2.8	

■ Knob Variety



Applicable models	Knob variety			Body thickness (mm)
	Type	Outer diameter D	Thickness (mm)	
RK10J11E RK10J12E (Manual)	K4	$\phi 14$	0.9	Black
	K5	$\phi 16$	3.0	
RK10J11R RK10J12R (Reflow)	K1	$\phi 14$	1.0	Black
	K2	$\phi 14$	2.5	
	K3	$\phi 16$		

Note

Marked are specifications recommended by Alps Alpine.

Rotary
Potentiometers

Slide
Potentiometers

Metal Shaft

Insulated
Shaft

Knob
Operating

Through
Shaft Type

Ring Type

With Knob Type / Ordering Products Not Listed

In addition to the Product Line, we accommodate the following specifications. Combinations not included in the Product Line are treated as semi-standard products. Please refer to the notation example below.

Sample Part Number

R K 1 0 J 1 1 R — **K 1** — **B 2 0 3**

Model type

Code	Model type
RK10J11E	10mm size single-unit Manual
RK10J12E	10mm size dual-unit Manual
RK10J11R	10mm size single-unit Reflow
RK10J12R	10mm size dual-unit Reflow

Shaft type (Outer diameter/Thickness) (mm)

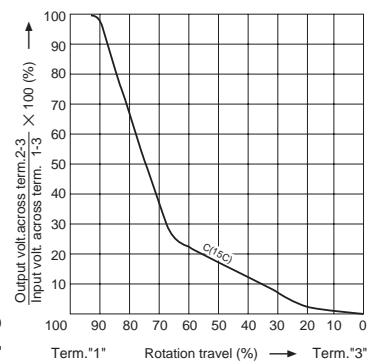
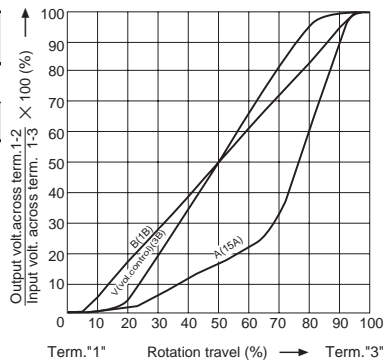
Code	RK10J1□E	RK10J1□R
K1	—	V14 t1.0
K2	—	V14 t2.5
K3	—	V16 t2.5
K4	V14 t0.9	—
K5	V16 t3.0	—

*Color : Black

Resistance taper

Code	Resistance taper	Code	Resistance taper
A	15A	C	15C
B	1B	V	3B

B: For tone & general
V: For vol.



Total resistance

Code	Total resistance (k Ω)	Code	Total resistance (k Ω)
103	10	503	50
203	20	104	100

Note

Marked are specifications recommended by Alps Alpine.

Rotary Potentiometers

Slide Potentiometers

Metal Shaft

Insulated Shaft







Knob Operating

Through Shaft Type

Ring Type

Knob Operating Type Potentiometers

List of Varieties

Type	Without knob type		With knob type	
Series	RK08H1 □ 1	RK08H1 □ 3	RK10J1 □ E	RK10J1 □ R
	Single-unit/Dual-unit	Single-unit/Dual-unit	Single-unit/Dual-unit	Single-unit/Dual-unit
Photo				
Terminal orientation	Vertical	Reflow type	—	—
Operating temperature range	-10°C to +60°C			
Operating life	Without detent 10,000 cycles With detent 5,000 cycles		10,000 cycles	
Automotive use	—	—	—	—
Life cycle				
Electrical performance	Total resistance (k Ω)	5, 10, 20, 50, 100		10, 20, 50, 100
	Resistance taper	15A, 1B, 3B, 15C		
	Rated power	0.03W		
	Insulation resistance	—	—	100MΩ min. 100V DC
	Voltage proof	—	—	100V AC for 1minute
Mechanical performance	Detent	Without / Center detent		Without
	Stopper strength	0.1N		70mN·m
	Push-pull strength	10N		5N
Terminal style	Insertion	Reflow	Insertion	Reflow
Page	333		337	

Residual Resistance

※ Applies only to products with specified residual resistance

Nominal total resistance	※ Residual resistance
100kΩ ≥ R ≥ 50kΩ	0.1% or less of nominal total resistance
50kΩ > R > 10kΩ	30Ω or less
10kΩ ≥ R	20Ω or less

Maximum Attenuation

Nominal total resistance	Maximum attenuation
R ≥ 100kΩ	90dB min.
100kΩ > R ≥ 50kΩ	80dB min.
50kΩ > R ≥ 10kΩ	70dB min.
10kΩ > R	60dB min.

Knob Operating Type Potentiometers Soldering Conditions	341
Potentiometers Cautions	384
Potentiometers Measurement and Test Methods	386
Potentiometers Resistance Taper	388