

# 12mm Size Insulated Shaft Snap-in Type RK12L Series

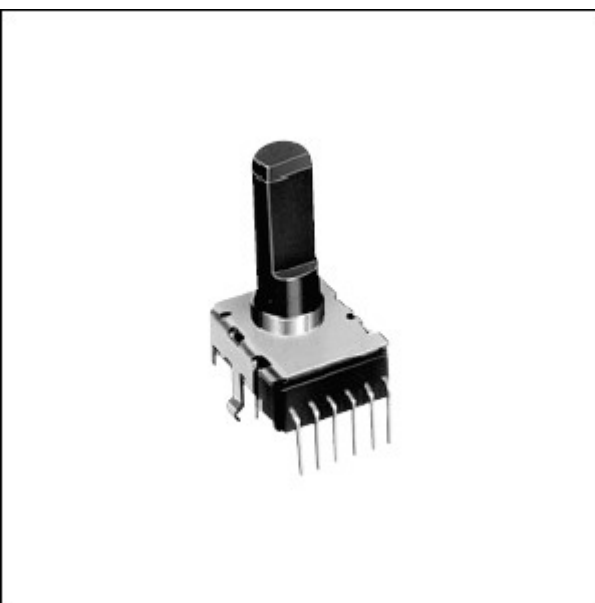
- [Photo](#) | 
 [Dimensions](#) | 
 [Mounting Hole Dimensions](#) | 
 [Terminal Layout / Circuit Diagram](#) | 
 [Packing Specifications](#) | 
 [Soldering Conditions](#) |

PRINT

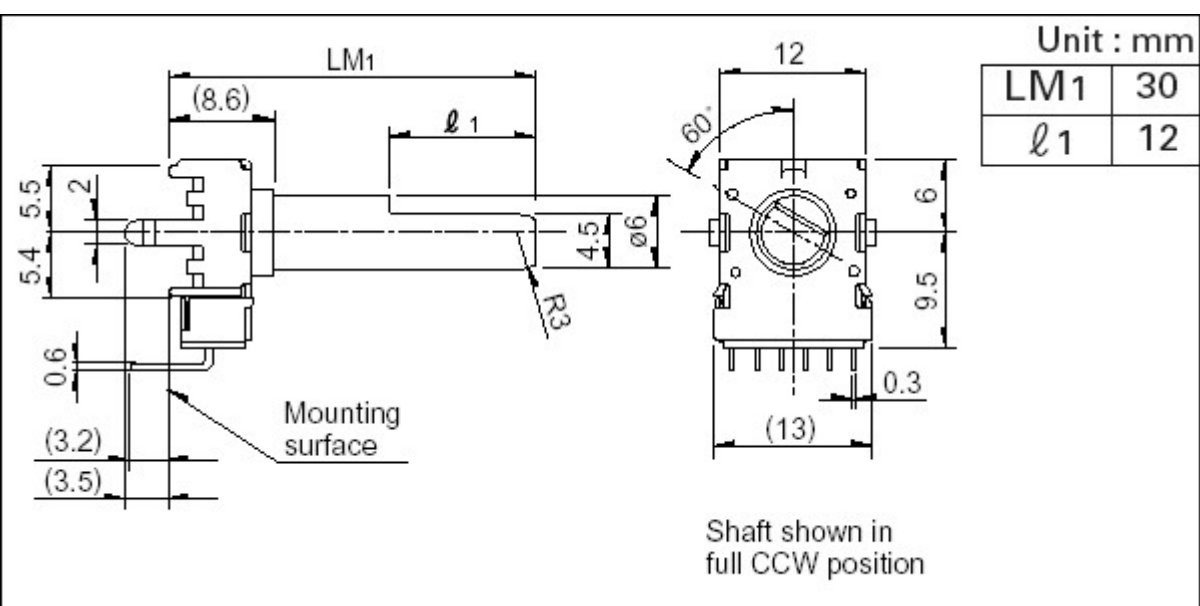
Part number	<b>RK12L12C0A0A</b>	
Number of resistor elements	Dual-unit	
Mounting direction	Vertical type	
Shaft types	Flat	
Length of the shaft LM1	30mm	
Center detent	Without	
Total resistance	20kΩ	
Resistance taper	15A	
Operating temperature range	-10 to +70	
Electrical Performance	Total resistance tolerance	±20%
	Rated power	0.05W
	Maximum operating voltage	50V AC for AC only
	Gang error	-40dB to 0dB 3dB max.
	Insulation resistance	100MΩ min. 250V DC
	Voltage proof	300V AC for 1 minute
Mechanical Performance	Total rotational angle	300°±5°
	Rotational torque	2 to 15mN·m
	Stopper strength	0.5N·m
	Push-pull strength	80N max.
	Vibration	10 to 55 to 10Hz/min., the amplitude is 1.5mm for all the frequencies, in the 3 direction of X, Y and Z and for 2 hours respectively
Durability	Operating life	15,000 cycles
Minimum order unit (pcs.)	Japan	800
	Export	1,600



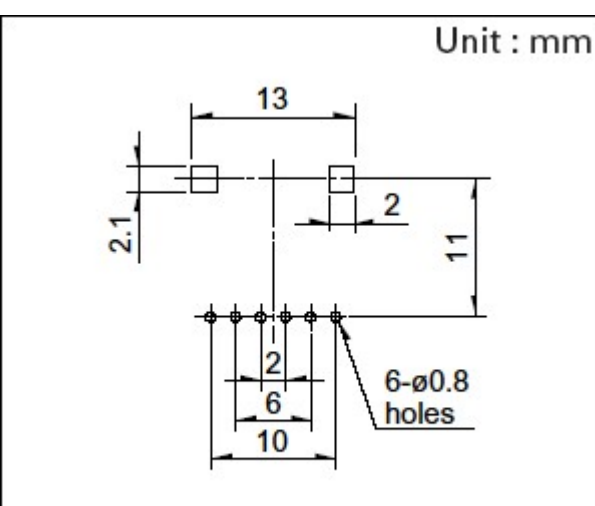
## Photo



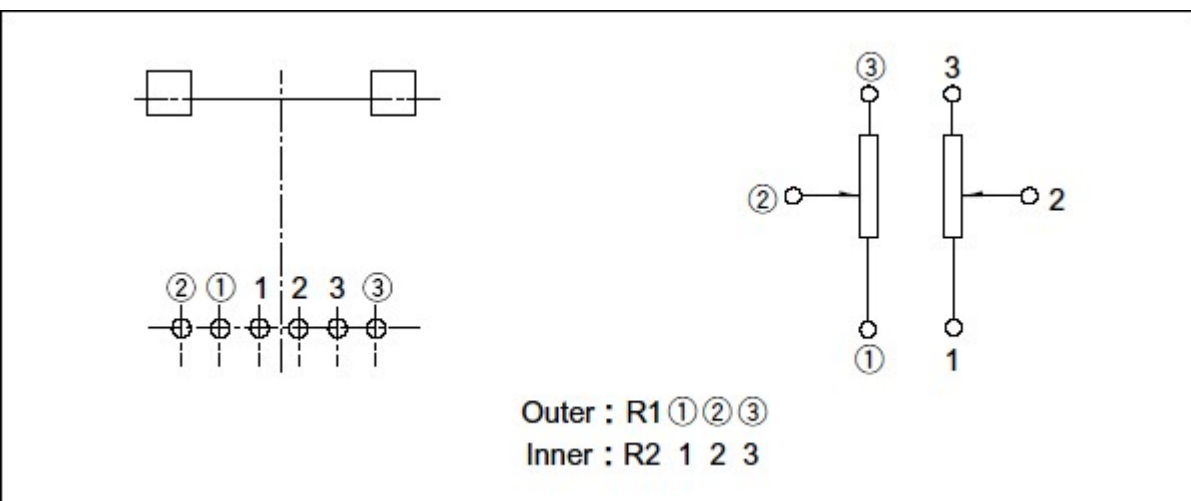
## Dimensions



## Mounting Hole Dimensions



## Terminal Layout / Circuit Diagram



## Packing Specifications

## Tray

Number of packages (pcs.)	1 case / Japan	800
	1 case / export packing	1,600
Export package measurements (mm)	374×532×240	

## Soldering Conditions

## Reference for Dip Soldering

Preheating	Soldering surface temperature	100℃ max.
	Heating time	1 min. max.
Dip soldering	Soldering temperature	260℃ max.
	Soldering time	5s max.
No. of solders	2 time max.	

## Reference for Hand Soldering

Tip temperature	350℃ max.
Soldering time	3s max.
No. of solders	1 time

## Notes are common to this series/models.

1. This site catalog shows only outline specifications. When using the products, please obtain formal specifications for supply.
2. Please place purchase orders per minimum order unit (integer).