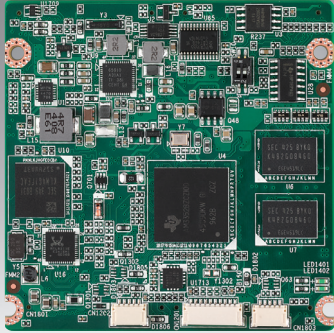


# ROM-3310

## TI Sitara™ ARM® AM3352 Cortex®-A8 1GHz RTX2.0 Module



### Features

- TI Sitara™ ARM® AM3352 Cortex®-A8 1GHz high performance processor
- On board DDR3 512MB memory / 4GB EMMC
- Supports wide range power input 5V-24V
- Supports 1 GbE, 1 USB 2.0, 1 USB 2.0 OTG, 2 CANbus, 10 GPIO, 4 UART, 1 I<sup>2</sup>C, 1 I<sup>2</sup>S, 1 SPI, 1 SDIO
- Operating temperature 0 ~ 60 °C / -40 ~ 85 °C
- Low power consumption, fanless design
- Supports Linux BSP



### Introduction

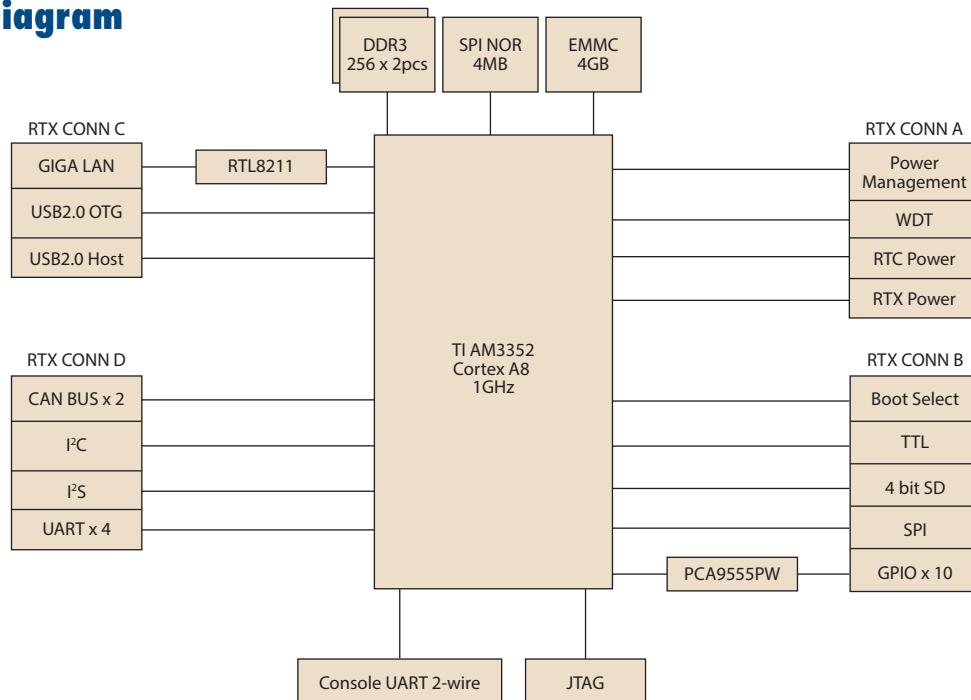
ROM-3310 RTX2.0 module integrates an ARM Cortex A8 single core 1 GHz TI AM3352 series ultra low power SoC and I/O solution with Linux. TI AM3352 supports multiple serial ports, 5V-24V wide range power inputs, and wide temperature -40 ~ 85 °C operation for data collection in industrial applications. Based on a thickness of 2 mm board, it uses an anti-oxidization golden finger design.

ROM-3310 RTX2.0 module offers an Advantech ROM-DB3900 evaluation carrier board for easy integration and hardware design reference, and also provides a Linux BSP utility and reference codes for application development and device integration.

### Specifications

Form Factor		RTX 2.0
Processor System	CPU	TI Sitara Cortex A8 AM3352 1GHz
Memory	Technology	DDR3 on board 800MHz
	Capacity	512MB
	Flash	4GB EMMC NAND Flash for O.S & 4MB SPI NOR Flash for ADV loader
Graphics	Parallel RGB	1 x 24-bit TTL, 1366 x 768
Ethernet	Chipset	TI AM3352 Integrated RGMII
	Speed	1 x 10/100/1000 Mbps
RTC	RTC	Yes
WatchDog Timer		MSP430G2202 (time out : 0.1-6553.5s, power on/off 4s)
I/O	USB	1 x USB 2.0 host, 1 x USB 2.0 OTG
	I <sup>2</sup> S	1
	SDIO	1
	Serial Port	4 x UART (1 x 4 wire, 3 x 2 wire w/ 3.3V)
	SPI	1
	CAN	2 x CAN 2.0
	GPIO	10
Power	Power Supply Voltage	5 ~ 24 V
	Power Consumption	2.11W (Max)
Environment	Operating Temperature	0 ~ 60 °C/ -40 ~ 85 °C
	Operating Humidity	0% ~ 90% relative humidity, non-condensing
Mechanical	Dimensions (W x D)	68 x 68 mm
Operating System		Linux Kernel v3.2.0
Certifications		CE/FCC Class B

### Block Diagram



### Ordering Information

Part Number	CPU	Memory	Flash	Parallel RGB	LAN	GPIO	USB Host	USB OTG	I <sup>2</sup> C	I <sup>2</sup> S	SD	SPI	UART	CAN	Operating Temperature
ROM-3310WS-MCA1E	Ti Sitara AM 3352 Cortex A8 1GHz	512MB	4GB	1	1	10	1	1	1	1	1	1	4	2	-40 ~ 85 °C
ROM-3310CS-MCA1E	Ti Sitara AM 3352 Cortex A8 1GHz	512MB	4GB	1	1	10	1	1	1	1	1	1	4	2	0 ~ 60 °C

### Development Board

Part No.	Description
ROM-DB3900-SWA1E	Development board for RTX2.0 module
ROM-DK3310-F0A1E	ROM-3310 EVK Kit (RTX v2.0)

### Optional Accessories

Part Number	Description
9696ED2000E	Debug adapter board
1700022373-01	Debug port cable for ROM-3420/5420/3310
1960070578T001	Heatsink_Black for ROM-3310
1930002234	Screws M2.5x12.5L, for Heatsink

### Dimensions

Unit: mm

