

Surface Mount

# Power Splitter/Combiner

2 Way-0° 50Ω 10 to 3000 MHz

RPS-2-30+



Generic photo used for illustration purposes only  
CASE STYLE: TT1413

**+RoHS Compliant**  
The +Suffix identifies RoHS Compliance. See our web site for RoHS Compliance methodologies and qualifications

Reel Size	Available Tape and Reel at no extra cost
7"	10, 20, 50, 100, 200
13"	500

## Maximum Ratings

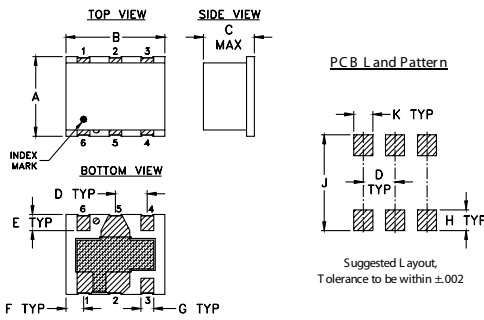
Operating Temperature	-40°C to 85°C
Storage Temperature	-55°C to 100°C
Power Input (as a splitter)	0.5W max.
Internal Dissipation	0.125W max.

Permanent damage may occur if any of these limits are exceeded.

## Pin Connections

SUM PORT	6
PORT 1	4
PORT 2	3
GROUND	1,2,5

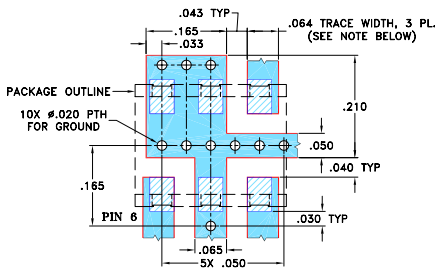
## Outline Drawing



## Outline Dimensions (inch/mm)

A	B	C	D	E	F	G	H	J	K	wt.
.250	.310	.20	.100	.050	.055	.040	.070	.270	.050	grams
6.35	7.87	5.08	2.54	1.27	1.40	1.02	1.78	6.86	1.27	0.5

## Demo Board MCL P/N: TB-155 Suggested PCB Layout (PL-110)



- NOTES: 1. TRACE WIDTH IS SHOWN FOR ROGERS RO4350B WITH DIELECTRIC THICKNESS 0.030" ± 0.002"; COPPER: 1/2 OZ. EACH SIDE. FOR OTHER MATERIALS TRACE WIDTH MAY NEED TO BE MODIFIED.  
2. BOTTOM SIDE OF THE PCB IS CONTINUOUS GROUND PLANE.
- DENOTES PCB COPPER LAYOUT WITH SMOBC (SOLDER MASK OVER BARE COPPER)
  - DENOTES COPPER LAND PATTERN FREE OF SOLDER MASK

## Notes

- A. Performance and quality attributes and conditions not expressly stated in this specification document are intended to be excluded and do not form a part of this specification document.  
B. Electrical specifications and performance data contained in this specification document are based on Mini-Circuit's applicable established test performance criteria and measurement instructions.  
C. The parts covered by this specification document are subject to Mini-Circuit's standard limited warranty and terms and conditions (collectively, "Standard Terms"); Purchasers of this part are entitled to the rights and benefits contained therein. For a full statement of the Standard Terms and the exclusive rights and remedies thereunder, please visit Mini-Circuit's website at [www.minicircuits.com/MCLStore/terms.jsp](http://www.minicircuits.com/MCLStore/terms.jsp)

## Features

- wideband, 10 to 3000 MHz
- good isolation, 22 dB typ.
- small size

## Applications

- instrumentation
- catv
- cellular
- PCS
- GSM

## Electrical Specifications

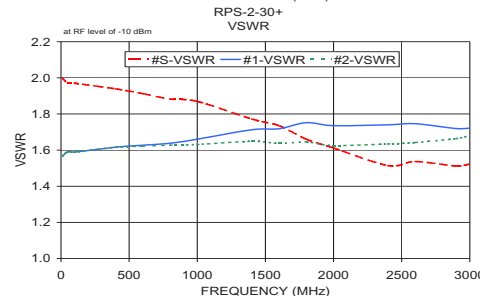
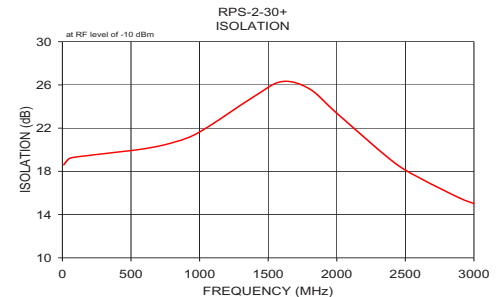
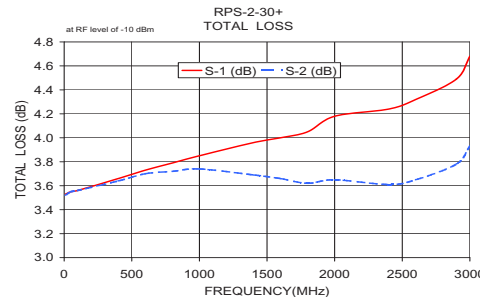
FREQ. RANGE (MHz)	ISOLATION (dB)						INSERTION LOSS (dB) ABOVE 3.0 dB						PHASE UNBALANCE (Degrees)			AMPLITUDE UNBALANCE (dB)		
	L		M		U		L		M		U		L	M	U	L	M	U
	Typ.	Min	Typ.	Min	Typ.	Min	Typ.	Max.	Typ.	Max.	Typ.	Max.	Max.	Max.	Max.	Max.	Max.	Max.
10-3000	19	12	22	15	15	9	0.6	1.0	0.9	1.5	1.2	2.5	2.0	4.0	8.0	0.3	0.6	1.2

L = low range [ $f_L$  to  $10 f_L$ ] M = mid range [ $10 f_L$  to  $f_U/2$ ] U = upper range [ $f_U/2$  to  $f_U$ ]

## Typical Performance Data

Frequency (MHz)	Total Loss <sup>1</sup> (dB)		Amplitude Unbalance (dB)	Isolation (dB)	Phase Unbalance (deg.)	VSWR S	VSWR 1	VSWR 2
	S-1	S-2						
10.00	3.53	3.52	0.01	18.61	0.01	2.00	1.57	1.57
50.00	3.55	3.55	0.01	19.19	0.04	1.97	1.59	1.59
100.00	3.56	3.56	0.00	19.33	0.06	1.97	1.59	1.59
400.00	3.66	3.64	0.02	19.78	0.09	1.94	1.62	1.62
600.00	3.73	3.70	0.03	20.10	0.14	1.91	1.63	1.62
800.00	3.79	3.72	0.07	20.65	0.09	1.88	1.64	1.63
1000.00	3.85	3.74	0.11	21.64	0.02	1.87	1.66	1.63
1400.00	3.96	3.69	0.27	24.95	0.59	1.77	1.71	1.65
1600.00	4.00	3.66	0.34	26.31	0.88	1.74	1.72	1.64
1800.00	4.05	3.62	0.43	25.64	1.27	1.66	1.75	1.64
2000.00	4.18	3.65	0.52	23.38	1.59	1.61	1.74	1.63
2400.00	4.24	3.61	0.63	19.00	2.43	1.51	1.74	1.63
2600.00	4.32	3.65	0.67	17.42	2.83	1.54	1.75	1.64
2900.00	4.49	3.78	0.71	15.51	3.65	1.51	1.72	1.66
3000.00	4.68	3.93	0.75	15.02	4.13	1.52	1.72	1.68

1. Total Loss = Insertion Loss + 3dB splitter loss.



## electrical schematic



[www.minicircuits.com](http://www.minicircuits.com) P.O. Box 350166, Brooklyn, NY 11235-0003 (718) 934-4500 sales@minicircuits.com

REV. E  
M151107  
RPS-2-30+  
EDR-5398  
RVN/HY/CP/AM  
200924  
Page 1 of 1