

10BASE-T NETWORK COMPONENTS

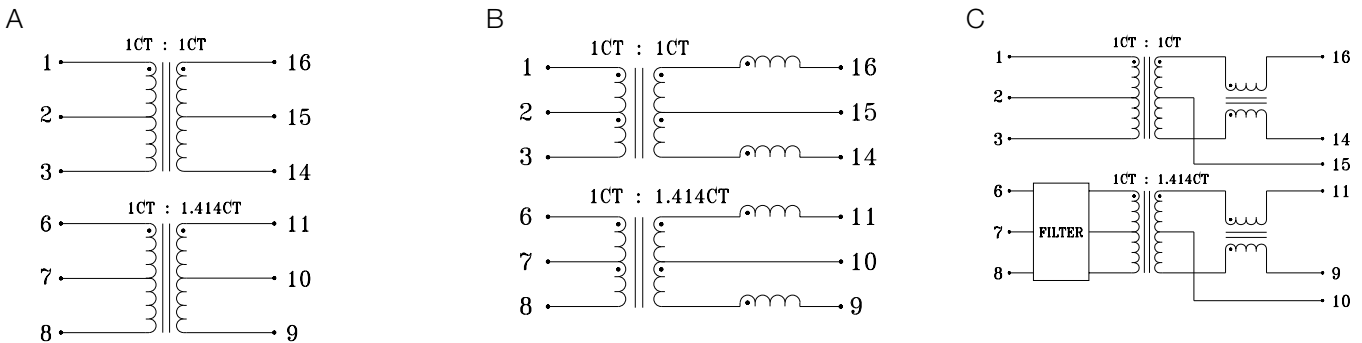
960051B

- Designed for use with Level One 10Base-T chipset LXT901 LXT907, LXT914 or Texas Instruments Quad PHY (TNETE 2004)
- 1:1 or 1:√2 turns ratio on transmit, 1:1 turns ratio on receive
- Single port components, available with and without common mode chokes
- Through-hole and surface mount packaging
- Models with additional differential filtering available
- 2000 Vrms isolation

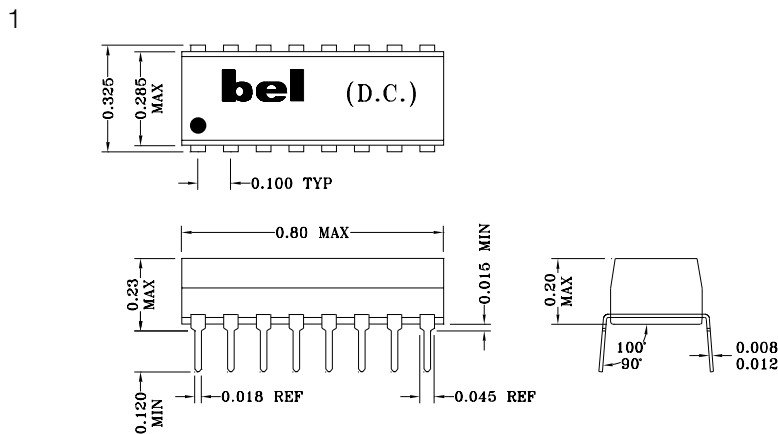
ELECTRICALS AT 25°C

| Part No. | Insertion Loss (dB) Max | | Return Loss (dB) Min | Crosstalk (dB) Min | Attenuation (dB) Min | | | CM-CM Rej (dB) Min | | Package Style |
|--------------|-------------------------|--------------|----------------------|--------------------|----------------------|------------|-----|--------------------|----|---------------|
| | 1-10MHz | OCL (μH) Min | | | 1-10MHz | 1MHz-10MHz | 25 | 30 | 40 | |
| A553-0716-00 | -1.0 | 140 | -18 | -40 | N/A | N/A | N/A | N/A | A | 1 |
| A553-5999-64 | -1.0 | 200 | -18 | -40 | N/A | N/A | N/A | N/A | A | 1 |
| S553-0716-00 | -1.0 | 140 | -18 | -40 | N/A | N/A | N/A | N/A | A | 2 |
| S553-5999-08 | -1.0 | 110 | -15 | -40 | N/A | -40 | -30 | B | 2 | |
| S556-5999-26 | -1.0 | 110 | -15 | -40 | -5 | -10 | -16 | C | 2 | |
| S556-5999-53 | -1.0 | 110 | -15 | -40 | -5 | -10 | -16 | C | 3 | |

SCHEMATICS



MECHANICALS



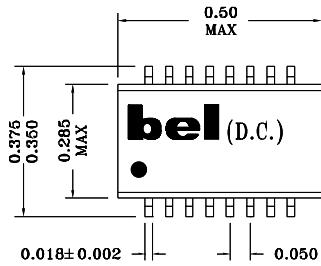
Specifications subject to change without notice.

10BASE-T NETWORK COMPONENTS

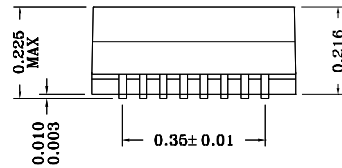
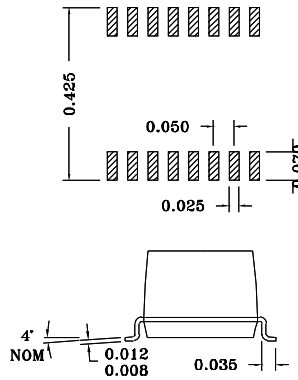
960051B

MECHANICALS (CONT'D)

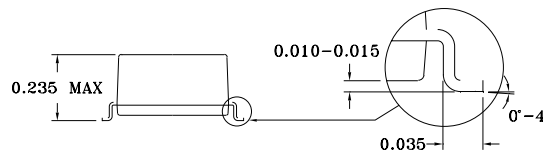
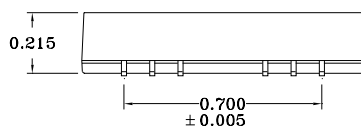
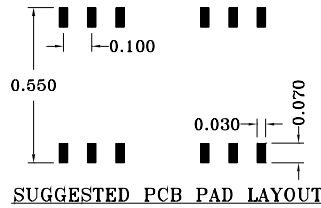
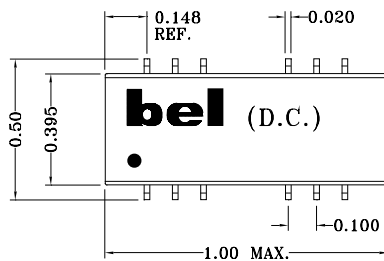
2



SUGGESTED PCB PAD LAYOUT



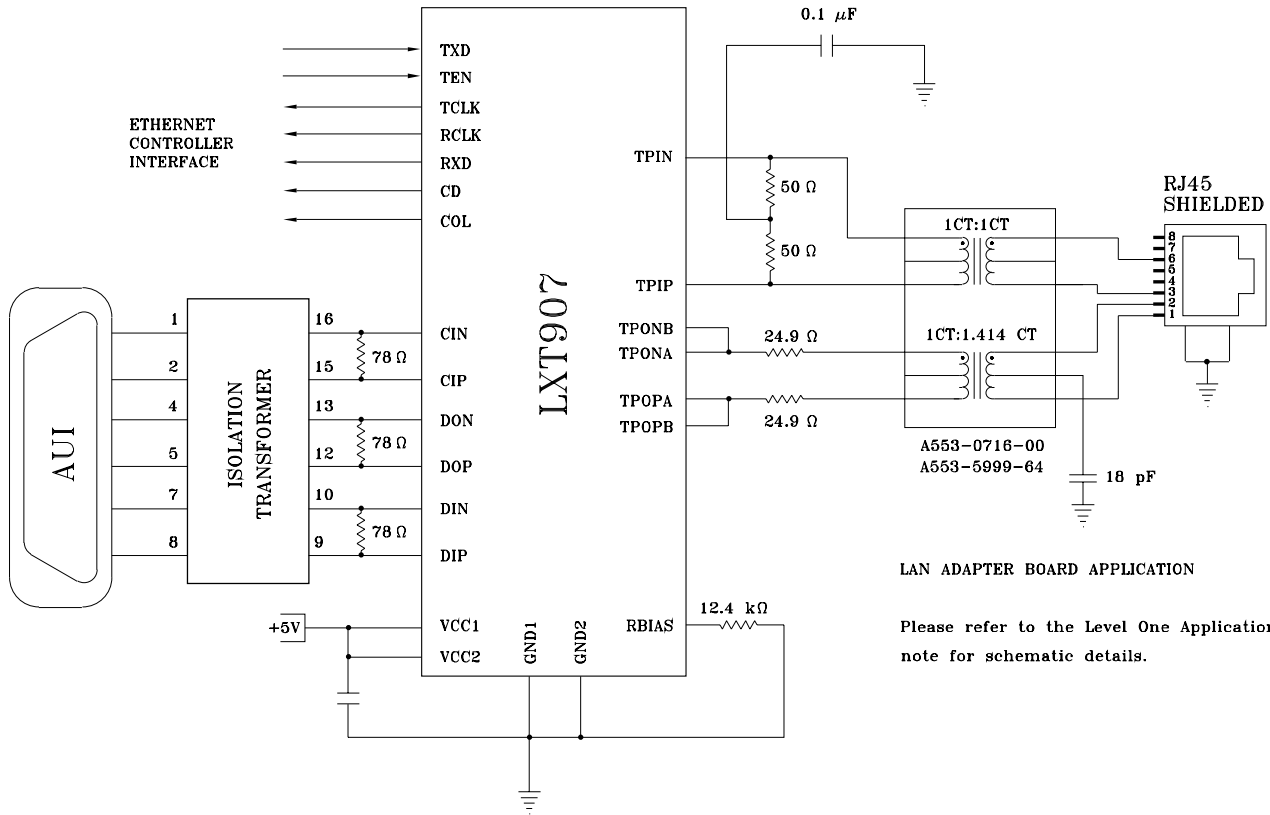
3



Specifications subject to change without notice.

10BASE-T NETWORK COMPONENTS

APPLICATION CIRCUIT



LAN ADAPTER BOARD APPLICATION

Please refer to the Level One Application note for schematic details.

Specifications subject to change without notice.