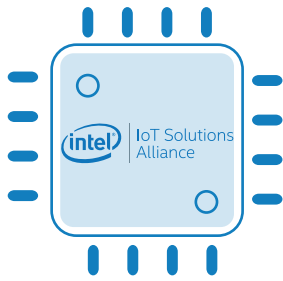




THE NEXT-GEN INTEL® X86 II OPEN HARDWARE SBC

www.udoo.org

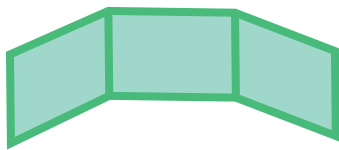
X86 II



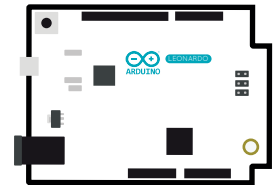
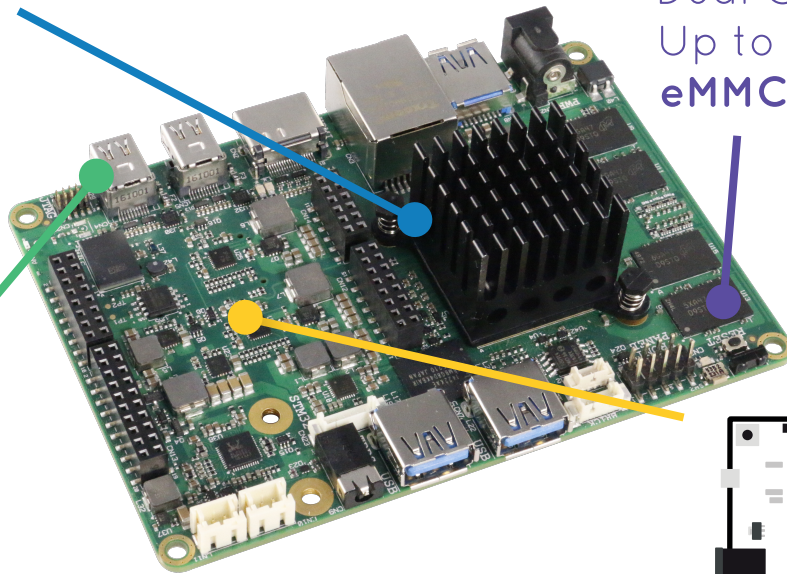
Quad core 64 BIT
CPU Up to **2.56 GHz**
GPU Up to **700 MHz**



Up to **8 GB**
Dual Channel **RAM**
Up to **32 GB**
eMMC Drive*



Up to **3 simultaneous screens**
1x HDMI, 2x MiniDP++



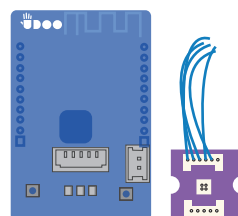
Embedded
Arduino™ Leonardo-compatible

Bluetooth 4.0 and Wi-Fi**



IoT Ready:

Main cloud services,
UDOO BRICKS &
UDOO BLU



Operating Systems:

Windows 10, 8.1, 7,
+ All Linux Flavors
for x86, Android






Low Consumption and Fanless



* Depends on version
** Optional



FEATURES	UDOO X86	
	ADVANCED PLUS	ULTRA
PROCESSOR	2.24 GHZ INTEL® CELERON® N3160	2.56 GHZ INTEL® PENTIUM® N3710
CORES	4	
MEMORY	4 GB DDR3L DUAL CHANNEL	8 GB DDR3L DUAL CHANNEL
MASS STORAGE	SATA connector - M.2 Key B SSD Slot - Micro SD card slot	
USB	eMMC 32 GB	
NETWORKING	3x USB 3.0 type-A sockets	
VIDEO INTERFACE	Gigabit Ethernet LAN interface M.2 Key E slot for optional Wireless modules	
GRAPHICS	1 x HDMI 2 x mini DP++	
MULTIMEDIA	Intel HD Graphics 400 Up to 640 MHz 12 execution units	Intel HD Graphics 405 Up to 700 MHz 16 execution units
AUDIO	HW Video decode: H.265/HEVC, H.264, MPEG2, MVC, VC-1, WMV9, JPEG, VP8, VP9 HW Video encode: H.264, MVC, JPEG	
IR	HD audio codec ALC 283CG Microphone+Headphone combo connector Preamplified speaker output - S/PDIF output	
OTHER INTERFACES	RC5 IR interface	
OPERATING SYSTEM	Up to 20 GPIOs - 2x I2C - 2x UART - LPC - SDIO - Touch Screen signals on external pin headers	
DIMENSIONS	  	
	120 mm x 85 mm (4.72 inch x 3.35 inch)	

Main Fields of Application



Digital Signage



3D Scanning



Gaming



Development platform



Interactive Installation



Smart Home Gateway



Rovers and Drones



Educational

The communication between the Braswell SoC and the ATmega32U4 Microcontroller goes through an internal USB interface just like Arduino Leonardo boards connect to external PCs.

Arduino Leonardo Microcontroller

Microcontroller	ATmega32U4
Other Interfaces	1 UART 1 x i2C 1 x SPI
Arduino Pinout	Arduino® Leonardo-compatible and compatible with most Arduino shields 5V compliant
Digital I/O Pinout	Up to 23 x digital I/O (7 PWM)
Analog I/O Pinout	12 x Analog input

UDOO X86 II is ARDUINO LEONARDO-COMPATIBLE

ARDUINO™ PINOUT

