

Surface Mount Low Pass Filter

SCLF-550+ SCLF-550

50Ω DC to 550 MHz

Maximum Ratings

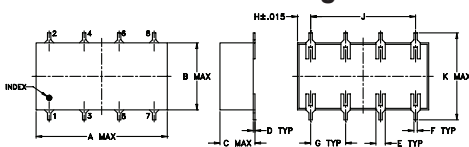
Operating Temperature	-40°C to 85°C
Storage Temperature	-55°C to 100°C
Power Input	0.5W max.

Permanent damage may occur if any of these limits are exceeded.

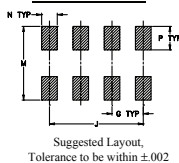
Pin Connections

INPUT	1
OUTPUT	8
GROUND	2,3,4,5,6,7

Outline Drawing



PCB Land Pattern

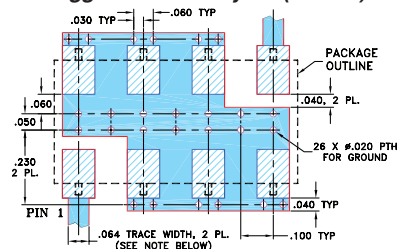


Outline Dimensions (inch)

A	B	C	D	E	F	G
0.75	0.38	0.28	0.01	0.05	0.02	0.2
19.05	9.65	7.11	0.25	1.27	0.51	5.08

H	J	K	M	N	P	wt
0.075	0.6	0.45	0.47	0.1	0.15	grams
1.91	15.24	11.43	11.94	2.54	3.81	1.60

Demo Board MCL P/N: TB-187+ Suggested PCB Layout (PL-049)



- NOTES: 1. TRACE WIDTH IS SHOWN FOR ROGERS RO4350B WITH DIELECTRIC THICKNESS .030" ± .002"; COPPER: 1/2 OZ. EACH SIDE. FOR OTHER MATERIALS TRACE WIDTH MAY NEED TO BE MODIFIED.
2. BOTTOM SIDE OF THE PCB IS CONTINUOUS GROUND PLANE.
- DENOTES PCB COPPER LAYOUT WITH SMOBC (SOLDER MASK OVER BARE COPPER)
 - ▨ DENOTES COPPER LAND PATTERN FREE OF SOLDER MASK

Features

- wide selection of cut-off frequencies
- excellent rejection
- custom models available

Applications

- defense communications
- receivers/transmitters
- harmonic rejection of VCOs



Generic photo used for illustration purposes only
CASE STYLE: YY161

+RoHS Compliant

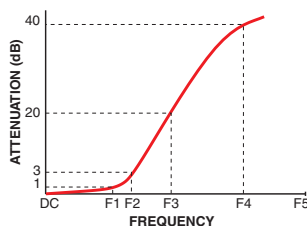
The +Suffix identifies RoHS Compliance. See our web site for RoHS Compliance methodologies and qualifications

Electrical Specifications

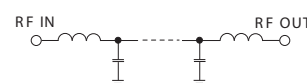
Parameter	F#	Frequency (MHz)	Min.	Typ.	Max.	Unit	
Pass Band	Insertion Loss	DC-F1	DC-550	—	—	1.0	dB
	Freq. Cut-Off	F2	605	—	3.0	—	dB
	VSWR	DC-F1	DC-550	—	1.7	—	:1
Stop Band	Rejection Loss	F3-F4	800-1050	20	—	—	dB
		F4-F5	1050-2000*	40	—	—	dB
	VSWR	F3-F5	800-2000	—	18	—	:1

* Loss > 35 dB

Typical Frequency Response

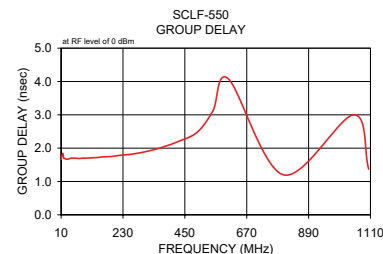
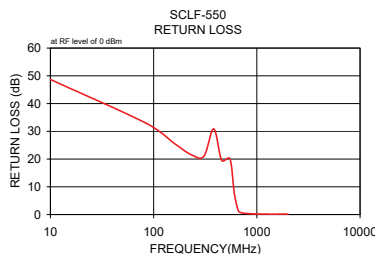


Electrical Schematic



Typical Performance Data

Frequency (MHz)	Insertion Loss (dB)		Return Loss (dB)	Frequency (MHz)	Group Delay (nsec)
	\bar{x}	σ			
10.00	0.03	0.00	48.70	10.00	1.66
84.40	0.08	0.00	32.94	11.85	1.74
158.80	0.13	0.00	25.63	13.97	1.78
233.10	0.20	0.01	21.50	16.35	1.84
307.50	0.25	0.01	21.08	19.44	1.70
381.90	0.29	0.01	30.87	22.93	1.69
456.30	0.44	0.02	19.57	27.05	1.67
550.00	0.70	0.02	20.04	31.90	1.67
605.00	2.21	0.29	7.56	37.63	1.68
660.00	9.74	0.62	1.40	44.38	1.70
688.00	14.38	0.63	0.82	52.35	1.70
716.00	18.81	0.64	0.59	61.74	1.70
744.00	23.02	0.63	0.48	72.83	1.69
772.00	27.05	0.64	0.41	85.90	1.70
800.00	30.94	0.66	0.37	100.21	1.70
828.00	34.76	0.71	0.33	118.20	1.71
872.40	40.79	0.84	0.28	137.89	1.72
916.80	47.07	1.09	0.24	162.64	1.74
961.20	54.10	1.62	0.23	189.73	1.75
1005.60	63.67	3.21	0.20	223.79	1.79
1050.00	72.37	1.21	0.18	261.07	1.82
1100.00	68.33	2.87	0.18	307.93	1.89
1212.50	66.09	1.64	0.16	359.23	2.00
1325.00	71.09	2.35	0.14	423.71	2.19
1437.50	80.39	4.11	0.13	494.29	2.48
1550.00	73.52	3.11	0.13	550.00	3.12
1662.50	66.16	1.26	0.15	605.00	4.08
1775.00	63.13	0.38	0.15	800.00	1.20



Notes

- Performance and quality attributes and conditions not expressly stated in this specification document are intended to be excluded and do not form a part of this specification document.
- Electrical specifications and performance data contained in this specification document are based on Mini-Circuit's applicable established test performance criteria and measurement instructions.
- The parts covered by this specification document are subject to Mini-Circuit's standard limited warranty and terms and conditions (collectively, "Standard Terms"); Purchasers of this part are entitled to the rights and benefits contained therein. For a full statement of the Standard Terms and the exclusive rights and remedies thereunder, please visit Mini-Circuit's website at www.minicircuits.com/MCLStore/terms.jsp



www.minicircuits.com P.O. Box 350166, Brooklyn, NY 11235-0003 (718) 934-4500 sales@minicircuits.com

REV. E
M151107
SCLF-550
200813

Surface Mount Low Pass Filter

SCLF-550+

Typical Performance Data

FREQ. (MHz)	INSERTION LOSS (dB)			INPUT RETURN LOSS (dB)			OUTPUT RETURN LOSS (dB)		
	@ -40° C	@ +25° C	@ +85° C	@ -40° C	@ +25° C	@ +85° C	@ -40° C	@ +25° C	@ +85° C
10	0.03	0.03	0.04	42.90	40.93	39.51	42.78	40.87	39.51
20	0.04	0.04	0.05	38.10	35.97	34.57	37.97	35.78	34.43
30	0.05	0.04	0.06	34.94	32.87	31.69	34.83	32.76	31.49
40	0.07	0.06	0.07	32.54	30.71	29.74	32.40	30.55	29.53
50	0.06	0.07	0.07	30.55	29.07	28.30	30.46	28.89	28.04
60	0.07	0.07	0.08	28.88	27.75	27.24	28.78	27.53	26.92
70	0.05	0.07	0.07	27.43	26.65	26.44	27.31	26.44	26.06
80	0.07	0.09	0.08	26.10	25.79	25.74	26.01	25.59	25.41
90	0.07	0.09	0.08	24.96	25.09	25.27	24.89	24.93	24.93
100	0.08	0.10	0.09	23.96	24.53	24.91	23.94	24.35	24.60
110	0.10	0.09	0.10	23.16	24.09	24.72	23.11	23.92	24.35
120	0.10	0.10	0.10	22.46	23.74	24.62	22.46	23.58	24.27
130	0.12	0.12	0.12	21.88	23.49	24.61	21.91	23.31	24.31
140	0.11	0.12	0.12	21.48	23.32	24.75	21.53	23.15	24.42
150	0.11	0.13	0.12	21.19	23.24	24.93	21.22	23.05	24.56
200	0.13	0.14	0.15	21.53	23.98	25.84	21.46	23.72	25.44
250	0.12	0.16	0.18	25.23	25.99	26.67	25.26	25.68	26.36
300	0.14	0.16	0.19	28.93	28.07	27.46	29.28	27.57	27.09
320	0.15	0.17	0.21	29.63	29.05	28.22	29.92	28.38	27.78
330	0.15	0.18	0.21	29.93	29.71	28.74	30.29	28.92	28.18
340	0.15	0.18	0.22	30.47	30.49	29.36	30.75	29.57	28.70
350	0.16	0.19	0.23	31.33	31.46	30.10	31.46	30.40	29.22
400	0.19	0.22	0.27	34.78	34.32	29.61	34.31	32.70	28.93
450	0.22	0.27	0.31	26.41	26.38	25.29	26.04	26.28	25.13
500	0.28	0.33	0.38	29.53	29.27	30.95	28.80	29.08	29.76
550	0.49	0.60	0.68	15.15	15.13	14.38	15.21	15.22	14.42
600	3.07	3.25	3.47	3.86	3.84	3.73	3.83	3.88	3.74
660	11.21	11.53	11.71	0.76	0.76	0.80	0.71	0.78	0.79
688	15.44	15.80	15.95	0.47	0.49	0.53	0.42	0.50	0.51
716	19.79	20.19	20.33	0.34	0.38	0.41	0.30	0.39	0.39
744	23.33	23.77	23.88	0.27	0.32	0.35	0.23	0.34	0.33
772	27.31	27.80	27.87	0.23	0.28	0.31	0.21	0.29	0.31
800	31.72	32.07	32.17	0.21	0.26	0.30	0.19	0.27	0.29
828	35.22	35.78	35.92	0.19	0.25	0.28	0.16	0.26	0.28
900	47.67	48.33	48.64	0.16	0.23	0.27	0.15	0.23	0.28
1000	54.97	54.68	55.00	0.12	0.21	0.26	0.12	0.22	0.27
1050	50.73	50.82	50.95	0.11	0.20	0.25	0.12	0.22	0.27
1100	50.07	49.99	50.37	0.09	0.21	0.26	0.12	0.21	0.29
1200	49.76	49.91	50.29	0.07	0.21	0.27	0.11	0.22	0.30
1300	50.40	50.51	50.50	0.08	0.21	0.28	0.13	0.23	0.33
1400	52.67	51.88	53.60	0.08	0.22	0.29	0.13	0.24	0.33
1500	55.23	54.94	56.95	0.08	0.21	0.31	0.11	0.23	0.33
1550	55.73	56.58	56.97	0.09	0.22	0.31	0.13	0.24	0.34
1600	58.48	58.32	59.50	0.10	0.22	0.31	0.10	0.24	0.34
1700	62.00	62.43	65.66	0.10	0.25	0.31	0.11	0.24	0.32
1800	74.10	74.33	76.58	0.12	0.25	0.33	0.11	0.25	0.32
1900	69.27	69.45	66.25	0.12	0.25	0.33	0.11	0.24	0.32
2000	68.98	65.13	64.57	0.13	0.26	0.33	0.09	0.24	0.30
2100	59.38	58.56	58.61	0.13	0.26	0.33	0.11	0.24	0.29
2200	60.88	55.36	58.53	0.12	0.26	0.33	0.10	0.24	0.28
2300	56.23	55.32	54.25	0.12	0.25	0.32	0.09	0.27	0.27
2400	52.93	51.80	53.70	0.14	0.26	0.34	0.09	0.26	0.28
2500	52.57	53.18	52.77	0.12	0.26	0.34	0.07	0.26	0.26
2600	53.86	54.21	53.40	0.14	0.25	0.36	0.07	0.27	0.27

REV. X2

SCLF-550+

101116

Page 1 of 2



IF/RF MICROWAVE COMPONENTS • ISO 9001 ISO 14001 AS 9100 CERTIFIED • RoHS compliant

P.O. Box 350166, Brooklyn, New York 11235-0003 (718) 934-4500 Fax (718) 332-4661



The Design Engineers Search Engine finds the model you need, Instantly • For detailed performance specs & shopping online see



Surface Mount Low Pass Filter

SCLF-550+

Typical Performance Data

FREQ. (MHz)	GROUP DELAY (nsec)		
	@ -40° C	@ +25° C	@ +85° C
0.1	2.75	2.75	2.59
10	0.94	0.91	0.84
20	1.00	0.94	0.99
30	0.85	0.87	0.89
40	0.98	1.01	0.99
50	0.89	0.92	0.87
60	0.98	0.85	0.88
70	0.89	0.84	0.89
80	0.85	0.97	0.96
90	0.96	0.93	0.90
100	0.98	0.98	0.94
120	0.92	0.81	0.88
130	0.96	0.98	1.00
140	1.04	0.82	0.90
150	0.98	0.93	0.97
160	1.07	0.89	0.89
170	1.03	0.98	0.99
180	0.96	0.98	1.06
190	0.97	1.01	0.99
200	0.90	0.95	0.95
220	0.99	0.96	0.90
230	0.95	0.99	0.98
240	1.01	0.94	0.98
250	0.96	0.97	0.94
260	0.98	1.04	1.01
270	1.16	1.11	1.14
280	1.05	0.95	1.09
290	1.14	1.16	1.14
300	1.18	1.08	1.03
320	1.17	1.19	1.28
330	1.15	1.12	1.15
340	1.23	1.24	1.11
350	1.20	1.19	1.21
360	1.07	1.13	1.23
370	1.19	1.19	1.12
380	1.45	1.31	1.32
390	1.40	1.31	1.22
400	1.44	1.43	1.43
420	1.41	1.42	1.32
430	1.41	1.42	1.43
440	1.54	1.52	1.66
450	1.61	1.56	1.46
460	1.57	1.51	1.44
470	1.74	1.60	1.61
480	1.79	1.76	1.73
490	1.77	1.85	1.98
500	1.96	1.87	1.98
520	2.13	2.08	2.10
530	2.19	2.25	2.17
540	2.32	2.37	2.54
550	2.63	2.57	2.68
600	3.03	2.98	2.98
700	0.58	0.52	1.02
800	0.32	0.15	0.03
900	0.04	0.60	0.31

REV. X2
SCLF-550+
101116
Page 2 of 2



IF/RF MICROWAVE COMPONENTS • ISO 9001 ISO 14001 AS 9100 CERTIFIED RoHS compliant
P.O. Box 350166, Brooklyn, New York 11235-0003 (718) 934-4500 Fax (718) 332-4661

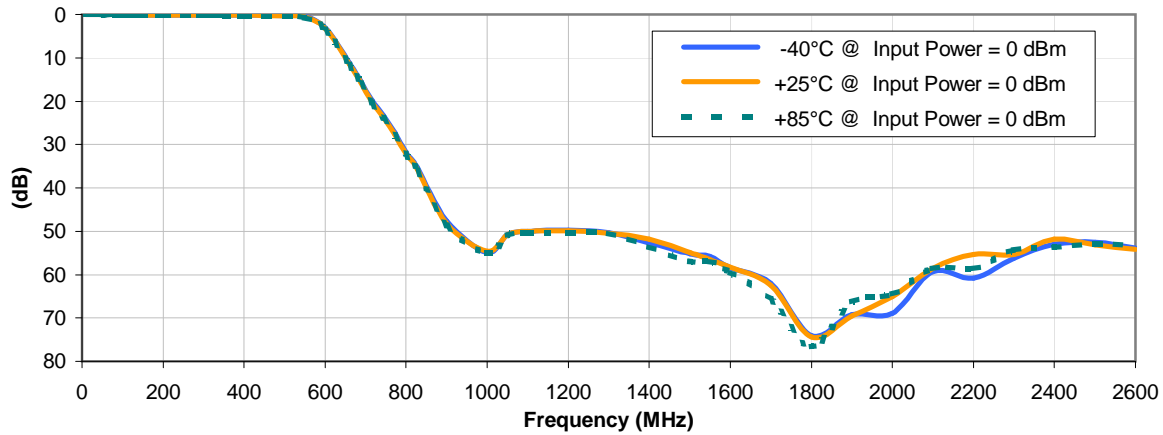


The Design Engineers Search Engine finds the model you need, Instantly • For detailed performance specs & shopping online see

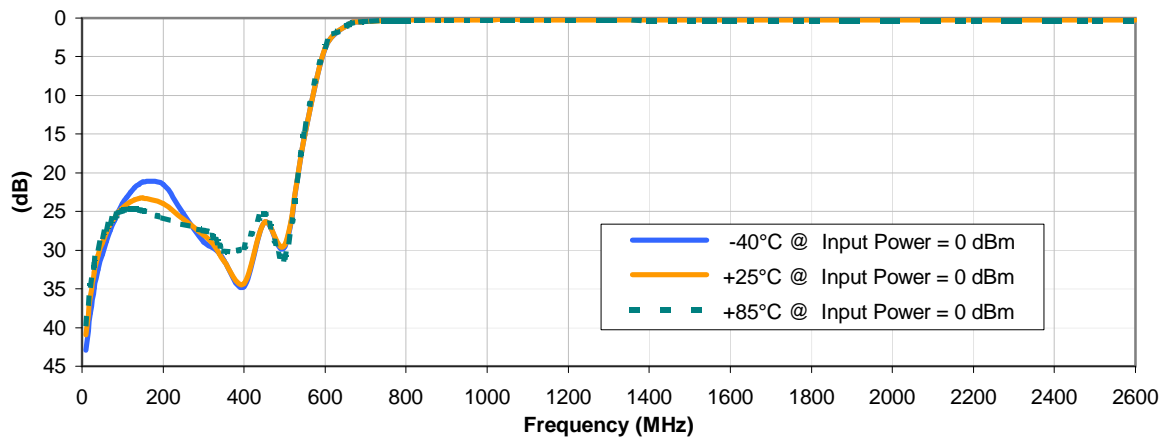


Typical Performance Curves

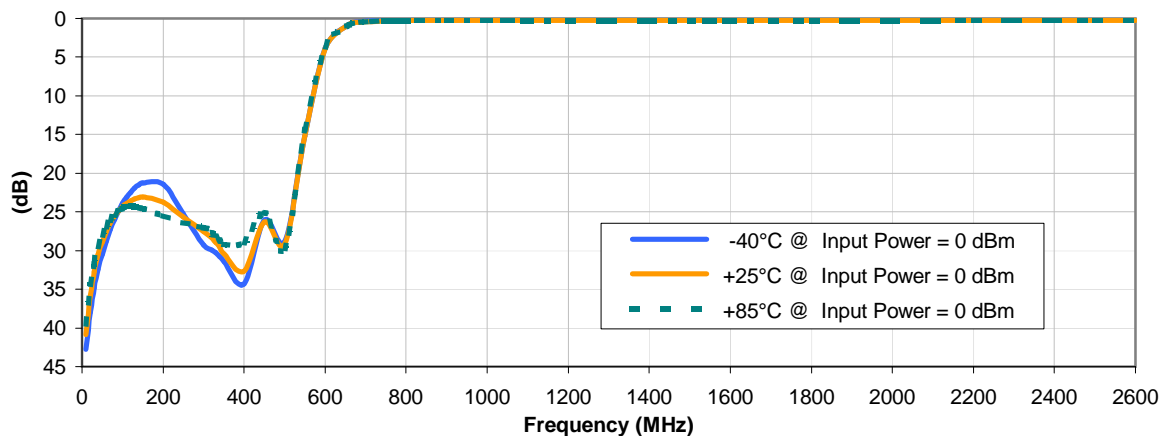
INSERTION LOSS vs. TEMPERATURE



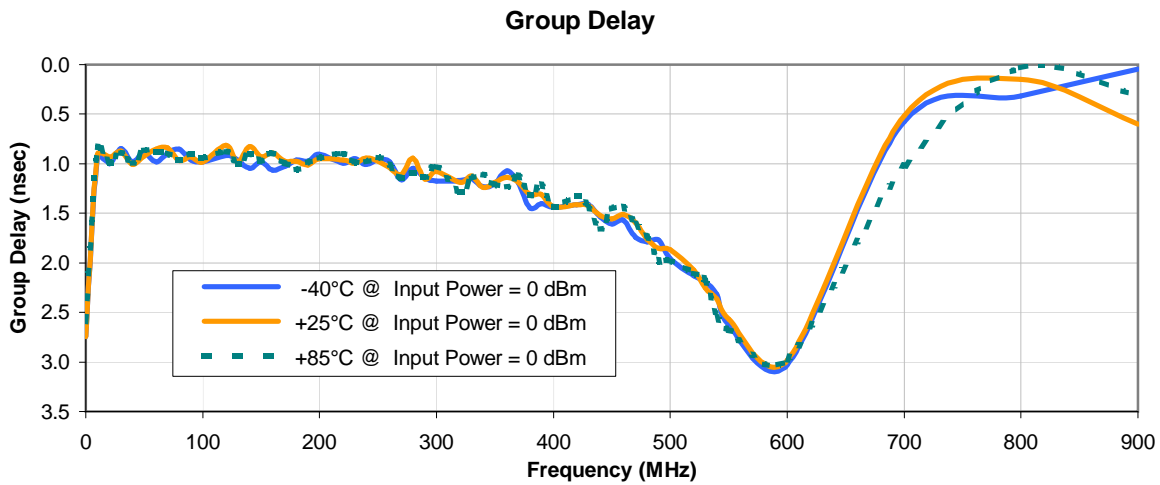
INPUT RETURN LOSS vs. TEMPERATURE



OUTPUT RETURN LOSS vs. TEMPERATURE

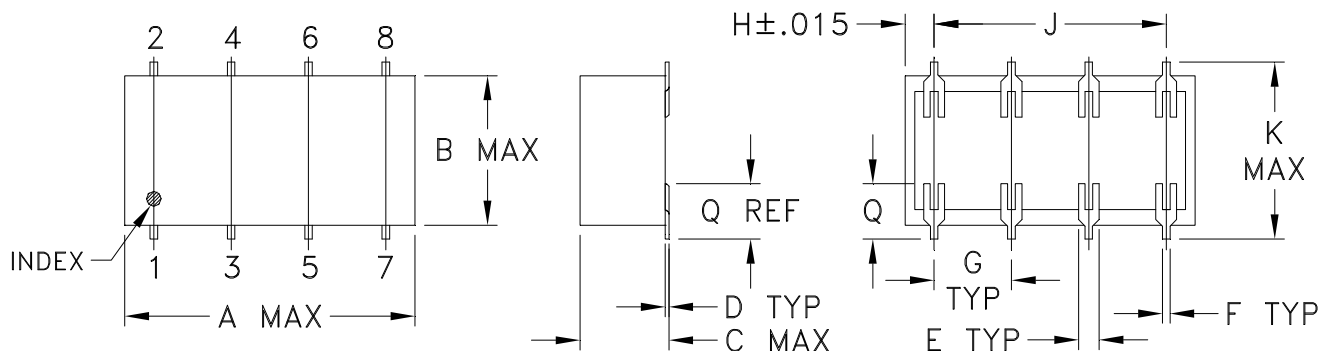


Typical Performance Curves

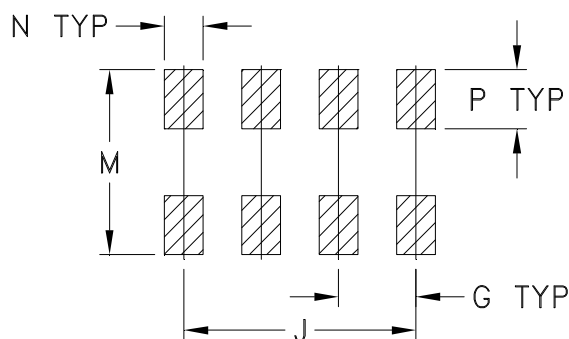


Outline Dimensions

YY101
YY109
YY161



PCB Land Pattern



Suggested Layout
Tolerance to be within $\pm .002$

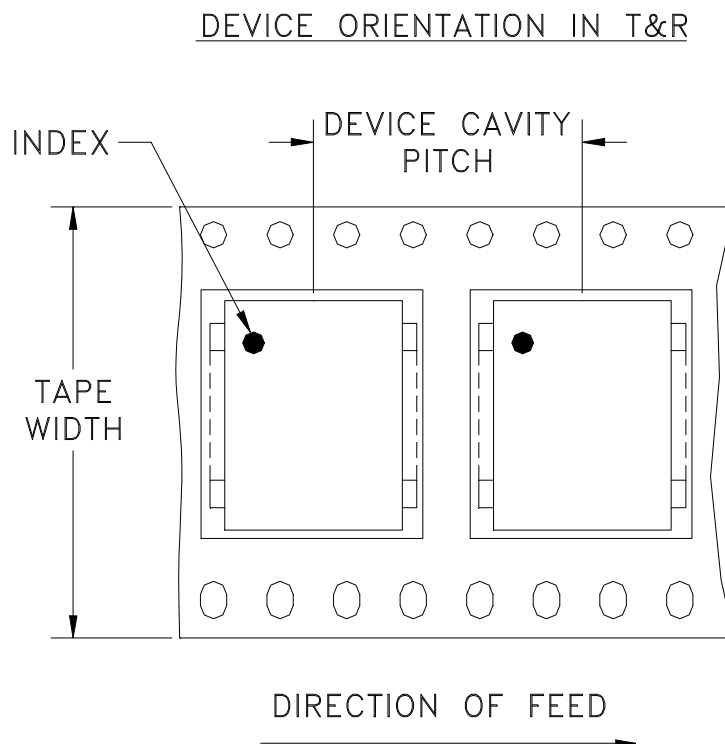
CASE#	A	B	C	D	E	F	G	H	J	K	L	M	N	P	Q	WT. GRAMS
YY101*			.20 (5.08)							.450 (11.43)	-- (11.94)	.470 (11.94)				1.6
YY109*	.75 (19.05)	.38 (9.65)	.20 (5.08)	.010 (0.25)	.050 (1.27)	.020 (0.51)	.200 (5.08)	.075 (1.91)	.600 (15.24)	.720 (18.29)	-- (18.80)	.740 (18.80)	.100 (2.54)	.150 (3.81)	.148 (3.76)	1.6
YY161			.28 (7.11)							.450 (11.43)	-- (11.94)	.470 (11.94)				1.6

Dimensions are in inches (mm). Tolerances: 2 Pl. $\pm .01$; 3 Pl. $\pm .005$

Notes:

- Case material: Plastic.
- Termination finish:
For RoHS Case Styles: Tin plate over Nickel plate.
For RoHS-5 Case Styles: Tin-Lead plate.
- Special Tolerances: Termination thickness $\pm .003$ inch.
- * Denotes: For SCM mixers, long termination version (case YY109) is available upon request, consult factory. To order short termination version (case YY101) add -NL suffix.

Tape & Reel Packaging TR-F5



Tape Width, mm	Device Cavity Pitch, mm	Reel Size, inches	Devices per Reel
32	16	13	500

Mini-Circuits carrier tape materials provide protection from ESD (Electro-Static Discharge) during handling and transportation. Tapes are static dissipative and comply with industry standards EIA-481/EIA-541.

Go to: www.minicircuits.com/pages/pdfs/tape.pdf



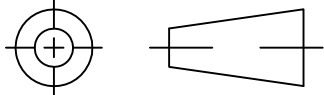
Distribution Centers NORTH AMERICA 800-654-7949 • 417-335-5935 • Fax 417-335-5945 • EUROPE 44-1252-832600 • Fax 44-1252-837010

Mini-Circuits ISO 9001 & ISO 14001 Certified

INTERNET <http://www.minicircuits.com>

P.O. Box 350166, Brooklyn, New York 11235-0003 (718) 934-4500 Fax (718) 332-4661

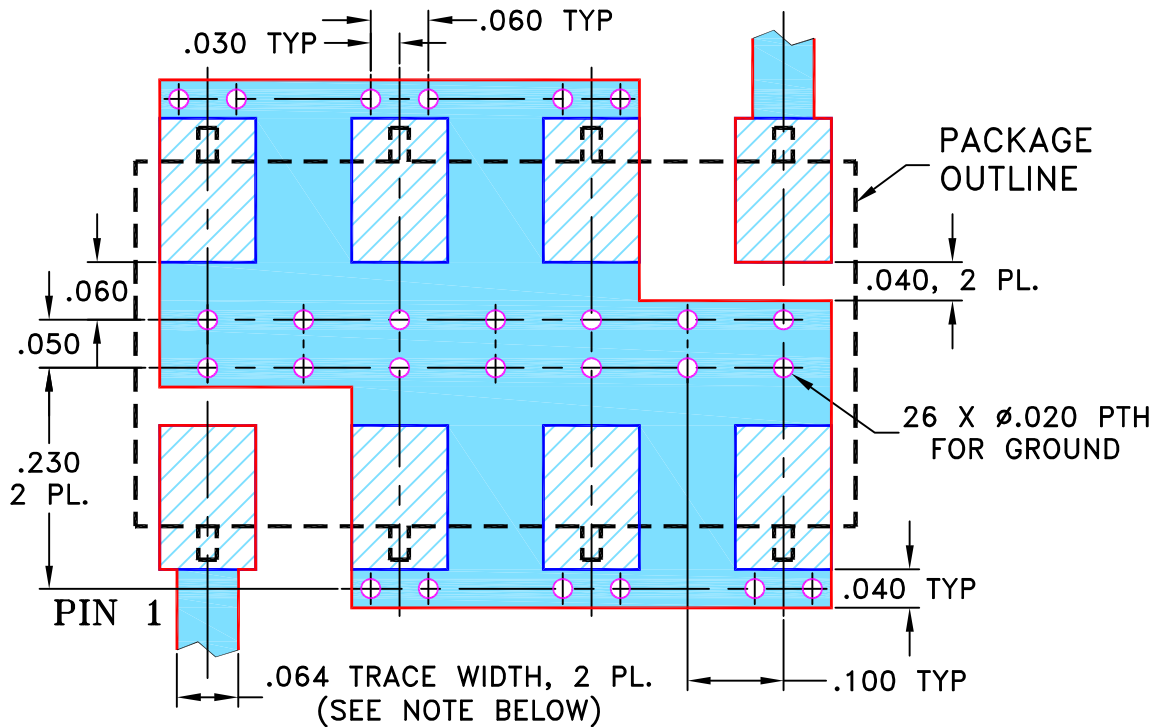
THIRD ANGLE PROJECTION



REVISIONS

REV	ECN No.	DESCRIPTION	DATE	DR	AUTH
OR	M81561	NEW RELEASE	09/11/02	GF	ABD
A	M101145	ADDED YY101 CASE STYLE & NOTE 2	10/07/05	MMG	ABD
B	M102713	ADDED "...WITH SMOBC"	01/16/06	GT	IL
C	M165986	TB-187+ (WAS TB-187)	02/01/18	ITG	IL

SUGGESTED MOUNTING CONFIGURATION FOR
YY101/YY161 CASE STYLE, "cr" PIN CONNECTION



- NOTES:** 1. TRACE WIDTH IS SHOWN FOR ROGERS R04350B WITH DIELECTRIC THICKNESS .030" ± .002"; COPPER: 1/2 OZ. EACH SIDE. FOR OTHER MATERIALS TRACE WIDTH MAY NEED TO BE MODIFIED.
2. BOTTOM SIDE OF THE PCB IS CONTINUOUS GROUND PLANE.



DENOTES PCB COPPER LAYOUT WITH SMOBC (SOLDER MASK OVER BARE COPPER)



DENOTES COPPER LAND PATTERN FREE OF SOLDER MASK

UNLESS OTHERWISE SPECIFIED	INITIALS		DATE
DIMENSIONS ARE IN INCHES	DRAWN	GF	08/12/02
TOLERANCES ON:	CHECKED	AV	09/11/02
2 PL DECIMALS ±	APPROVED	ABD	09/11/02
3 PL DECIMALS ± .005			
ANGLES ±			
FRACTIONS ±			



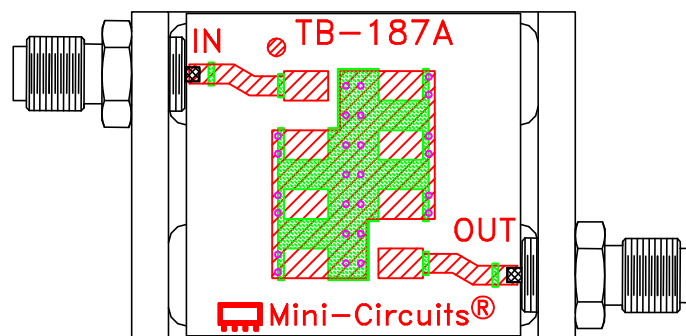
Mini-Circuits® 13 Neptune Avenue
Brooklyn NY 11235

PL, cr, YY101/YY161, SCLF, TB-187+

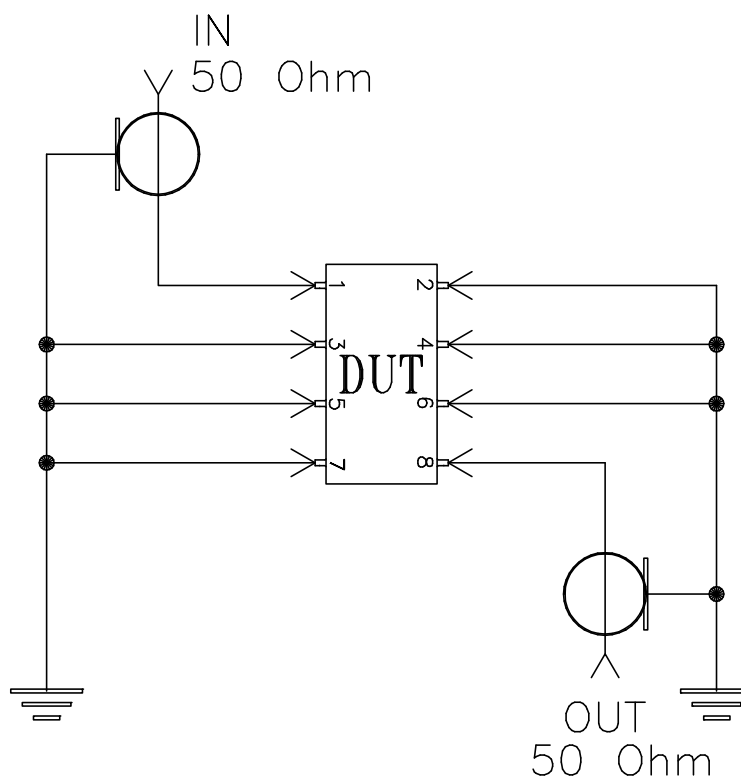
SIZE	CODE IDENT	DRAWING NO:	REV:
A	15542	98-PL-049	C
FILE:	98PL049	SCALE:	5:1
		SHEET:	1 OF 1

Mini-Circuits®
THIS DOCUMENT AND ITS CONTENTS ARE THE PROPERTY OF MINI-CIRCUITS. EXCEPT FOR USE EXPRESSLY GRANTED, IN WRITING, TO ITS VENDORS, VENDEE AND THE UNITED STATES GOVERNMENT, MINI-CIRCUITS RESERVES ALL PROPRIETARY DESIGN, USE, MANUFACTURING AND REPRODUCTION RIGHTS THERETO. THESE CONTENTS SHALL NOT BE USED, DUPLICATED OR DISCLOSED TO ANY OUTSIDE PARTY, IN WHOLE OR IN PART, WITHOUT WRITTEN PERMISSION OF MINI-CIRCUITS.

Evaluation Board and Circuit




TB-187+



Schematic Diagram

Notes:

1. SMA Female connectors.
2. PCB Material: Rogers R04350 or equivalent, Dielectric Constant=3.5, Thickness=.030 inch.

 **Mini-Circuits®**