

SD290-11-31-241



FEATURES

- Large Area
- Red Enhanced
- High Response

DESCRIPTION

The **SD 290-11-31-241** is a general-purpose silicon PIN photodiode, red enhanced, packaged in a leaded hermetic TO-8 metal package.

APPLICATIONS

- Instrumentation
- Industrial
- Medical

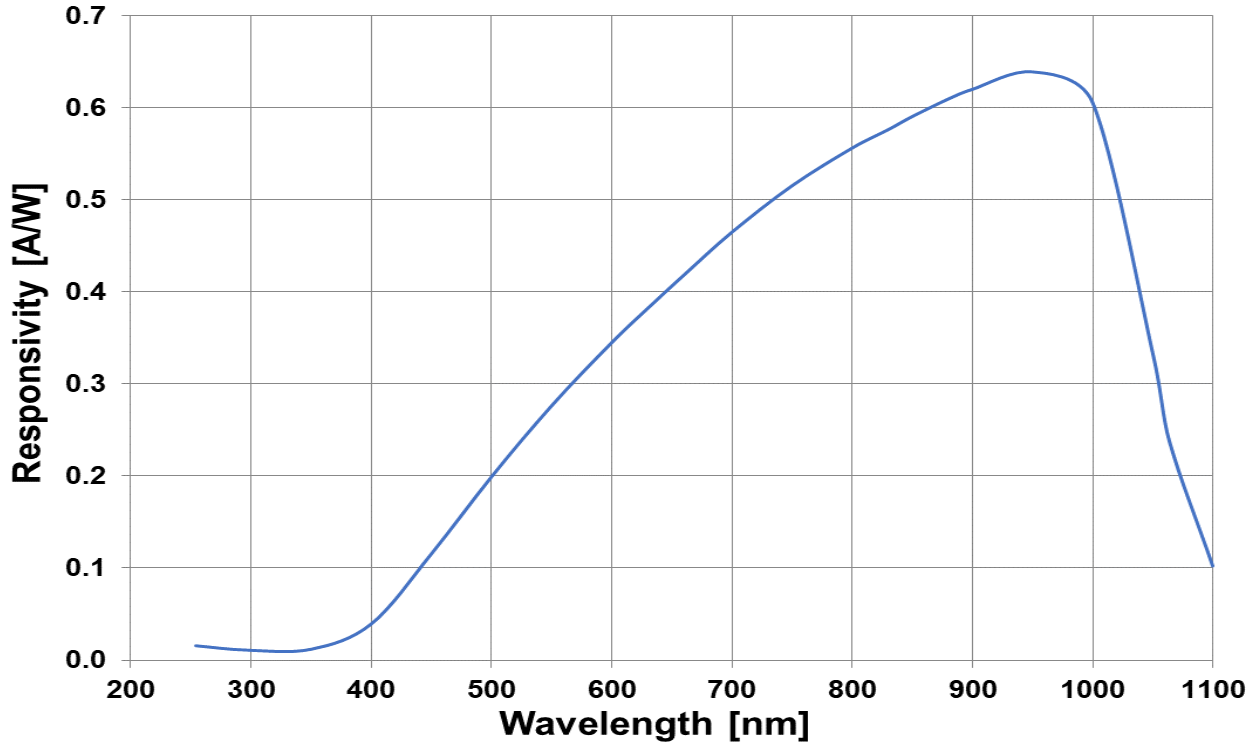
> Absolute Maximum Ratings

Part No.	Wavelength Range [nm]	Reverse Voltage [V]	Operating Temperature [C]	Storage Temperature [C]	Package
SD290-11-31-241	350 to 1100	75	-40 to +125	-55 to +150	TO-8

> Electrical and Optical Characteristics

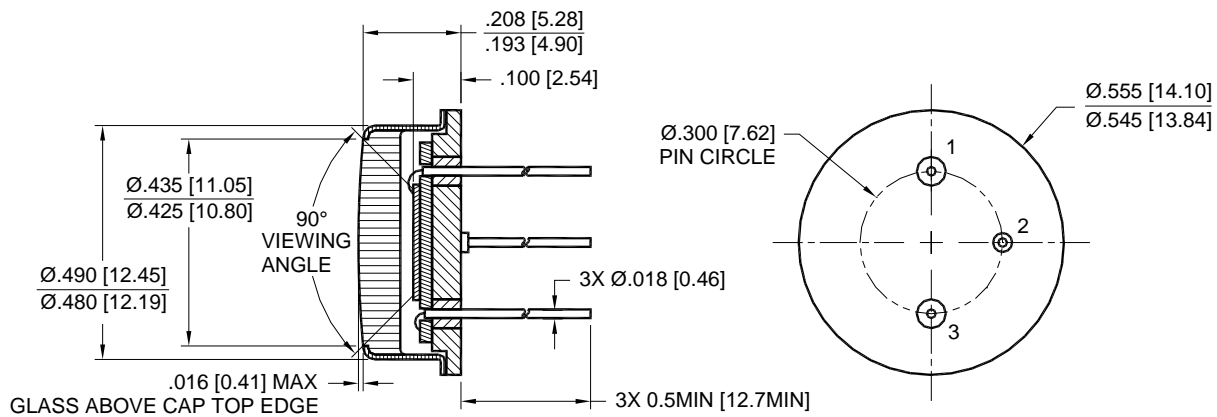
Typical Characteristics per elements (T=23°C unless specified)						
Parameter	Test Conditions	Symbol	Min	Typical	Max	Unit
Dark Current	$V_R=50V$	I_D	-	110	425	nA
Junction Capacitance	$V_R=0V, f=1MHz$	C_J	-	235	-	pF
	$V_R=50V, f=1MHz$		-	22	-	
Responsivity	$\lambda=900nm, V_R=0V$	R	0.5	0.55	-	A/W
Breakdown Voltage	$I=10\mu A$	V_{BR}	-	75	-	V
Noise Equivalent Power	$V_R=5V @ \lambda=950nm$	NEP	-	2.4×10^{-13}	-	W/√Hz
Response Time	$RL=50\Omega, V_R=0V$	t_r	-	300	-	nS
	$RL=50\Omega, V_R=50V$		-	12	-	

> Typical Spectral Response

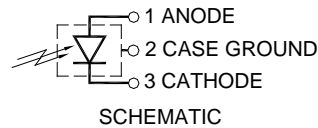
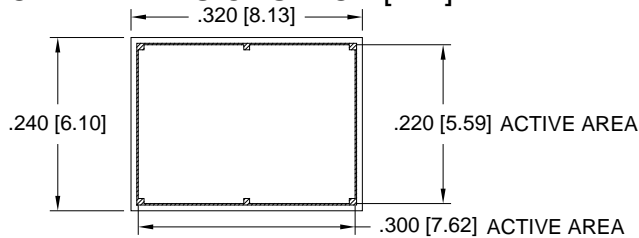


> Package Dimensions

PACKAGE DIMENSIONS INCH [mm]



CHIP DIMENSIONS INCH [mm]



TO-8 PACKAGE

> Soldering Conditions: 260°C 1/16 inch away from case for 3 seconds max.