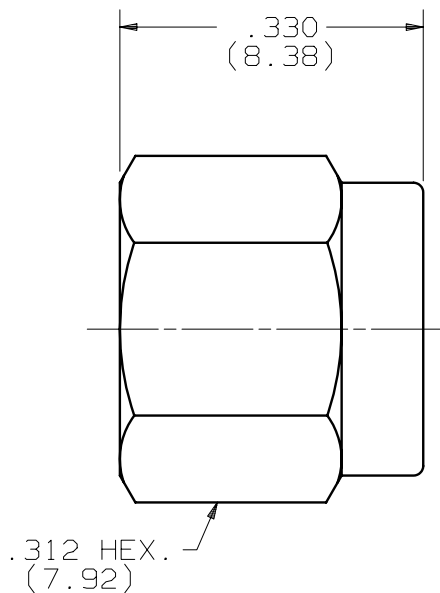


PRODUCT DATA DRAWING

CAD
GENERATED
DRAWING

DCN
CONTROLLED
DOCUMENT

DWG. NO.
SF2998-6001



MATERIAL:

BODY
 COUPLING NUT: STAINLESS STEEL PER AMS-5640,
 UNS S30300, TYPE I.
 LOCK RING: BERYLLIUM COPPER PER ASTM B196.
 GASKET: SILICONE RUBBER PER ZZ-R-765, CLASS II,
 GRADE 50/60

FINISH:

BODY
 COUPLING NUT: PASSIVATED PER QQ-P-35, TYPE II

| | | | | | | | | |
|------|----------------|-------|-------|--|---|--------------------------|----------------------------------|--|
| SYM. | DESCRIPTION | DATE | APPR. | UNLESS OTHERWISE SPECIFIED: 1) ALL DIMENSIONS ARE AFTER PLATING. 2) BREAK CORNERS & EDGES .005 R. MAX. 3) CHAM. 1st & LAST THDS. 4) SURFACE ROUGHNESS 63 / MIL-STD-10. 5) DIAS. ON COMMON CENTERS TO BE CONCENTRIC WITHIN .005 T.I.R. 6) REMOVE ALL BURRS. | DIMENSIONS ARE IN INCHES TOLERANCES: | | | <i>SV Microwave, Inc.</i> 2400 Centrepark West Drive, Suite 100 West Palm Beach, FL 33409 |
| B | REL. DCN 32690 | 02/05 | VMJ | | DECIMALS .X ±.030 .XX ±.015 .XXX ±.005 | FRACTIONAL ±1/64 | ANGULAR X° ±1°0' X°X' ±15' | |
| | | | | DRAWN: MEB 02/02/05 | MATERIAL: SEE ABOVE | | | SMA PLUG NON SHORTING DUST CAP |
| | | | | CHECKED: VMJ 02/02/05 | FINISH: SEE ABOVE | AREA: N/A | | DWG. NO. |
| | | | | APPROVED: VMJ 02/02/05 | SIZE A | CAGE NO. 95077 | SCALE N/A | SF2998-6001 |