

PRODUCT DATA DRAWING

CAD GENERATED DRAWING	DCN CONTROLLED DOCUMENT	DWG.NO. SF8934-6006
-----------------------------	-------------------------------	-------------------------------

ROHS COMPLIANT

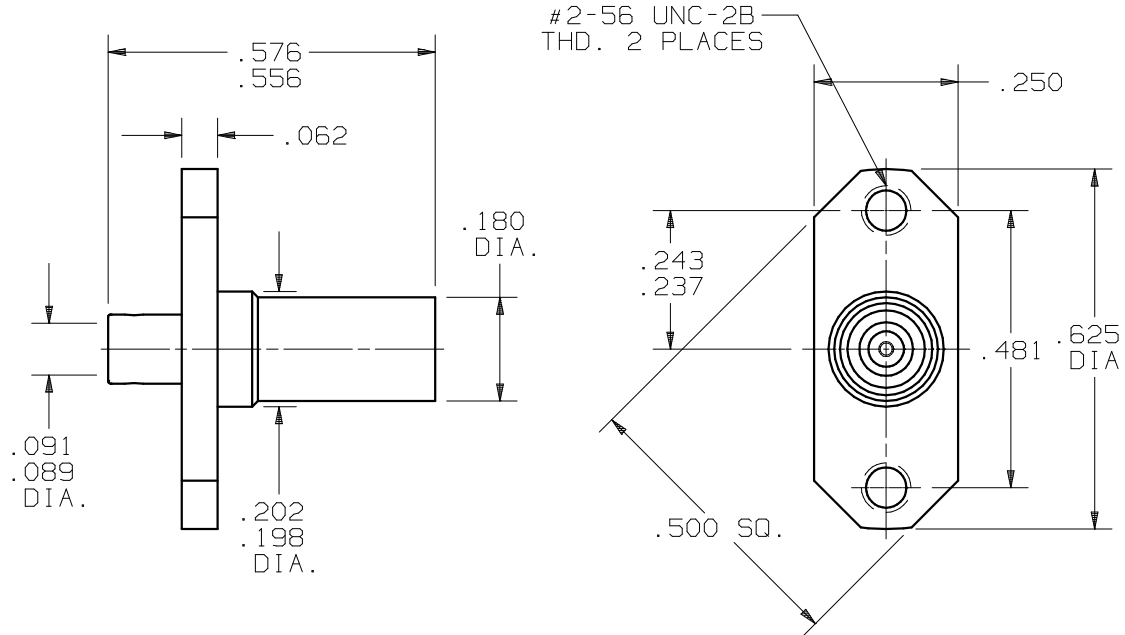
MATERIALS:

BODY: STAINLESS STEEL PER AMS-5640,
 UNS 530300, TYPE I
 REAR BODY: BRASS PER ASTM-B-16, ALLOY
 UNS C36000, H02
 CONTACT: BERYLLIUM COPPER PER ASTM-196,
 COND. TD04, ALLOY UNS-C17300
 INSULATORS: TEFLON PER ASTM-D-1457

FINISHES:

BODY: PASSIVATE PER QQ-P-35C TYPE II
 REAR BODY,
 CONTACT: GOLD PER MIL-G-45204, TYPE I,
 GRADE C, OVER NICKEL PER
 QQ-N-290, CLASS 1

IMPEDANCE: 50 OHMS
 FREQ. RANGE: 2.0 GHz TO 18 GHz
 D.W.V.: 1000 VRMS
 INSUL. RES.: 100,000 MEGOHMS MIN.



SYM.	DESCRIPTION	DATE	APPR.	UNLESS OTHERWISE SPECIFIED:	DIMENSIONS ARE IN INCHES			<i>SV Microwave, Inc.</i> www.svmicrowave.com
—	REL. NRN 28967	10/02	STW	1) ALL DIMENSIONS ARE AFTER PLATING. 2) BREAK CORNERS & EDGES .005 R. MAX. 3) CHAM. 1st & LAST THDS. 4) SURFACE ROUGHNESS 63 J MIL-STD-10. 5) DIAS. ON COMMON CENTERS TO BE CONCENTRIC WITHIN .005 T.I.R. 6) REMOVE ALL BURRS.	TOLERANCES: DECIMALS FRACTIONAL ANGULAR .X ±.030 X° ±1°0' .XX ±.015 ±1/64 X°X' ±15' .XXX ±.005			
				DRAWN: VMJ 10/02/02	MATERIAL: SEE P/L			"BMZ" 2 HOLE FLANGE MT. JACK, TO .085 S.R. CABLE
				CHECKED: STW 10/03/02	FINISH: SEE P/L	AREA: N/A	DWG. NO.	
				APPROVED: STW 10/03/02	SIZE A	SCALE 3X	SF8934-6006	