



Features

- IEEE 802.3 Ethernet compatible
- 10 GbE
- PoE+
- RoHS compliant* and halogen free**

SM43P01EL - 10 GbE Chip LAN Transformer Module

Electrical Specifications @ 25 °C

Inductance

..... 120 μ H min. @ 100 kHz, 0.1 V

Insertion Loss (TD-MX)

1-500 MHz..... -3.0 dB max.

Return Loss (TD-MX)

1-40 MHz..... -16 dB min.

40 \leq f \leq 500 MHz

..... -(16-10 log (f/40)) min.

Cross Talk

1-500 MHz..... -30 dB min.

DCMR (TD-MX)

1-250 MHz..... -22 dB min.

250-550 MHz..... -18 dB min.

Hi-Pot..... 1500 Vac, 60 s

PoE+ Current..... 600 mA

Operating Temperature.... 0 °C to +85 °C

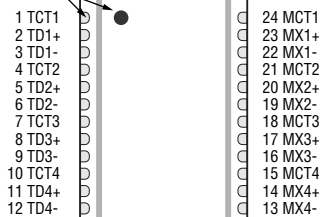
Storage Temperature.... -25 °C to +85 °C

Packaging Specifications

Tape & Reel..... 800 pcs./reel

Pin Layout

PIN 1 DOT



How To Order

SM43P01 E L

Model _____
 Packaging _____
 E = Tape and Reel (800 pcs. per reel)
 Termination _____
 L = Tin (RoHS Compliant)



WARNING Cancer and Reproductive Harm
www.P65Warnings.ca.gov

* RoHS Directive 2015/863, Mar 31, 2015 and Annex.
 ** Bourns considers a product to be "halogen free" if
 (a) the Bromine (Br) content is 900 ppm or less; (b)
 the Chlorine (Cl) content is 900 ppm or less; and (c)
 the total Bromine (Br) and Chlorine (Cl) content is
 1500 ppm or less.

Specifications are subject to change without notice.
 Users should verify actual device performance in their
 specific applications. The products described herein and
 this document are subject to specific legal disclaimers as
 set forth on the last page of this document, and at www.bourns.com/docs/legal/disclaimer.pdf.

Additional Information

Click these links for more information:



[PRODUCT](#)



[TECHNICAL
LIBRARY](#)

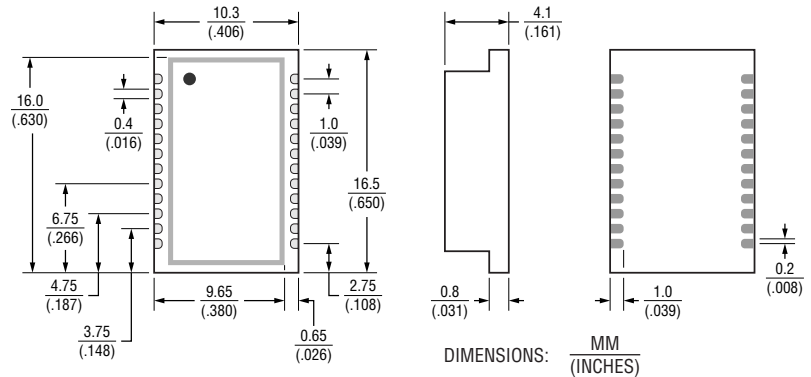


[INVENTORY](#)

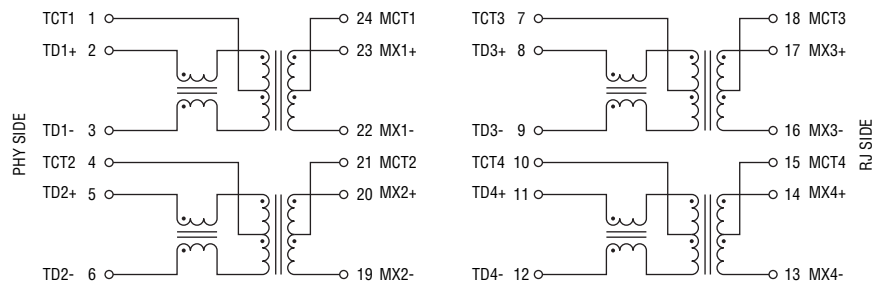


[SAMPLES](#)

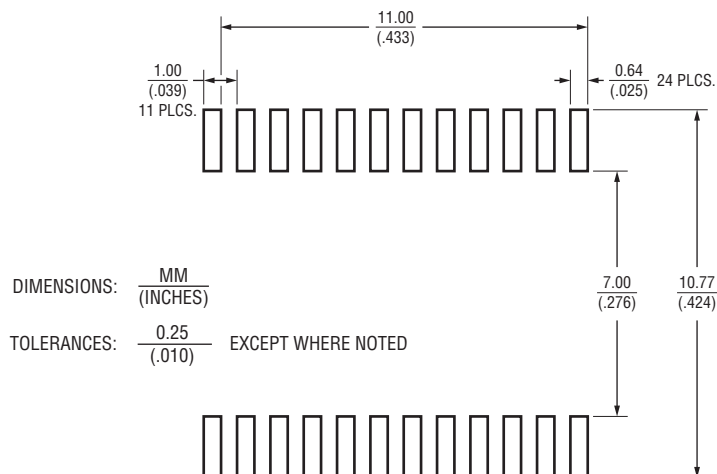
Product Dimensions



Electrical Schematic



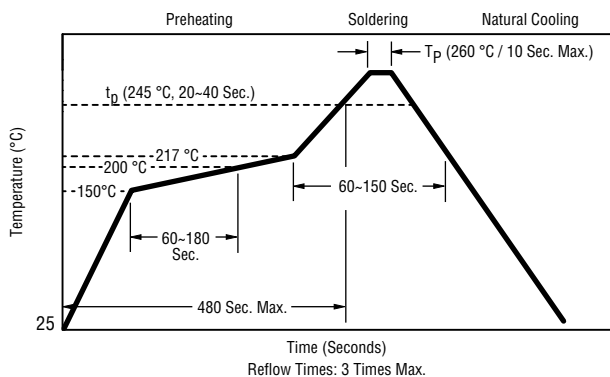
Recommended Layout



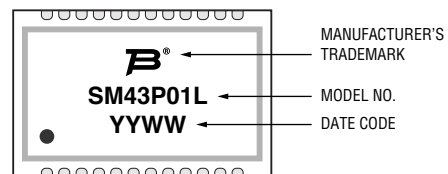
SM43P01EL - 10 GbE Chip LAN Transformer Module

BOURNS®

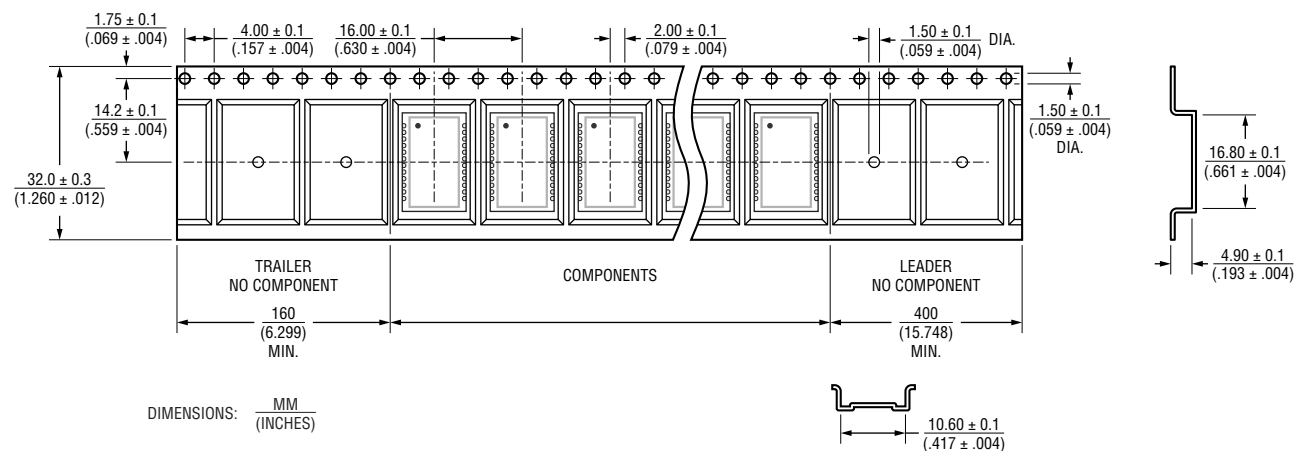
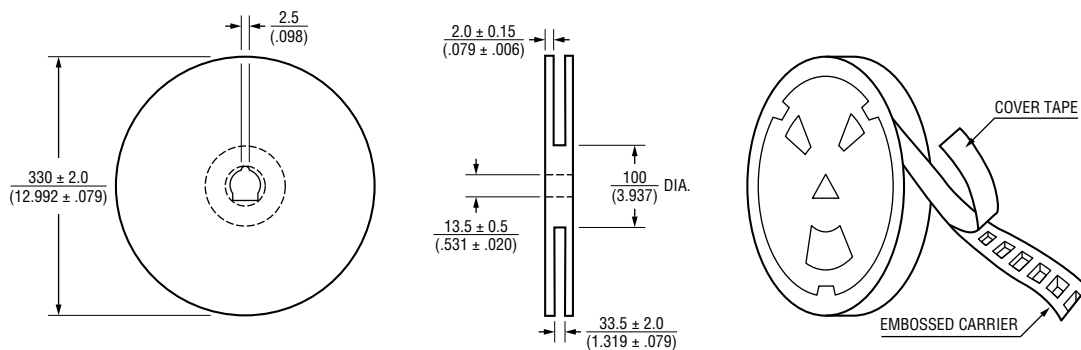
Solder Profile



Typical Part Marking



Packaging Specifications



USER DIRECTION OF FEED

QTY: 800 PCS. PER REEL

01/21

Specifications are subject to change without notice. Users should verify actual device performance in their specific applications. The products described herein and this document are subject to specific legal disclaimers as set forth on the last page of this document, and at www.bourns.com/docs/legal/disclaimer.pdf.

BOURNS®

Asia-Pacific: Tel: +886-2 2562-4117 • Email: asiacus@bourns.com

EMEA: Tel: +36 88 885 877 • Email: eurocus@bourns.com

The Americas: Tel: +1-951 781-5500 • Email: americus@bourns.com

www.bourns.com