

Features

- Compliant with IEEE802.3 standards
- Designed for 10/100/1000 Base-T and PoE++
- PoE up to 1.2 ADC per center tap
- RoHS compliant*

Applications

- LAN
- Ethernet
- Power over Ethernet - PoE+

SM51625EL LAN 10/100/1000 Base-T (PoE++) Transformer

Electrical Specifications @ 25 °C

Turns Ratio (TD:MX) $\pm 5\%$ 1CT:1CT
 OCL (@100 kHz, 0.1 V,
 28 mA, DC Bias) 80 μ H min.
 Leakage Inductance (TD, MX Short)
 @100 kHz, 0.1 V 0.5 μ H max.
 DCR (TD) 1.4 ohms max.
 C_{ww} (TD to MX) @ 100 kHz, 0.1 V
 25 pF typ.
 Hi-Pot (Pri to Sec) 1500 V_{rms}, 1 mA,
 60 seconds

Insertion Loss (TD:MX)
 0.3 to 1 MHz -1.1 dB max.
 1 to 65 MHz -0.8 dB max.
 65 to 100 MHz -1 dB max.

Return Loss (TD, MX w/100 Ω load)
 1 to 40 MHz -16 dB min.
 40 to 100 MHz -10+20*Log₁₀
 (f/80 MHz) dB min.

Cross Talk (Between Each Channel)
 1 to 30 MHz -41 dB min.
 30 to 60 MHz -37 dB min.
 60 to 100 MHz -33 dB min.

Common Mode Rejection (TD:MX)
 0.3 to 100 MHz -30 dB min.

PoE++ Current
 Up to 1.2 ADC per center tap

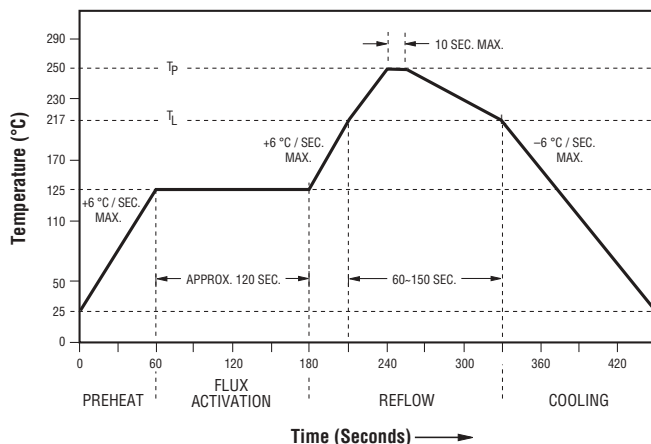
Operating Temperature Range
 -40 °C to +85 °C

Storage Temperature Range
 -55 °C to +125 °C

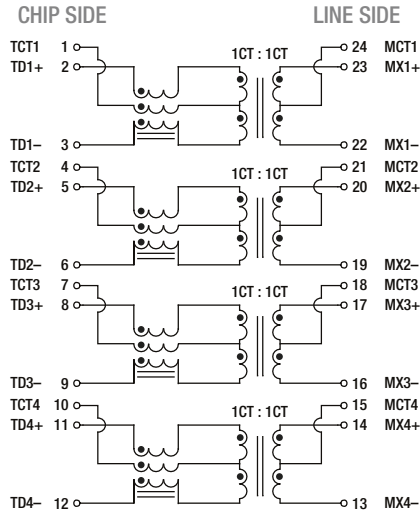
Packaging Specifications

Tape & Reel 350 pcs./reel

Reflow Solder Profile



Electrical Schematic



How To Order

Model **SM51625 E L**

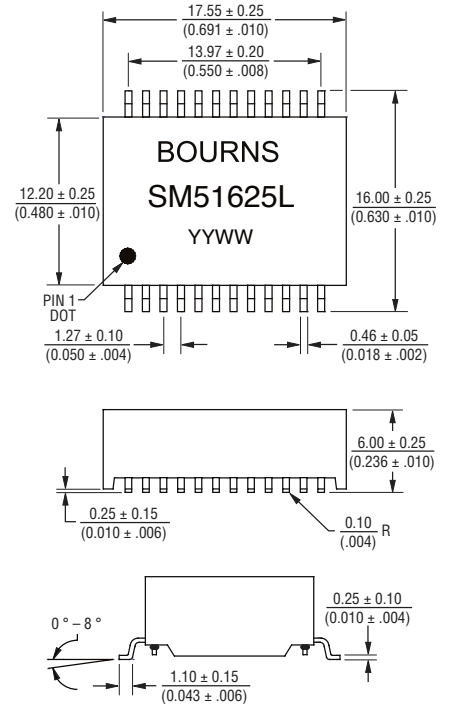
Packaging _____
 E = Tape and Reel (350 pcs./reel)

Termination _____
 L = Tin (RoHS Compliant)

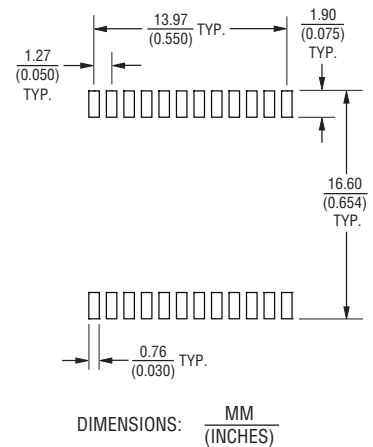
Environmental Specifications

Moisture Sensitivity Level 1
 ESD Classification (HBM) N/A

Product Dimensions



Recommended Layout



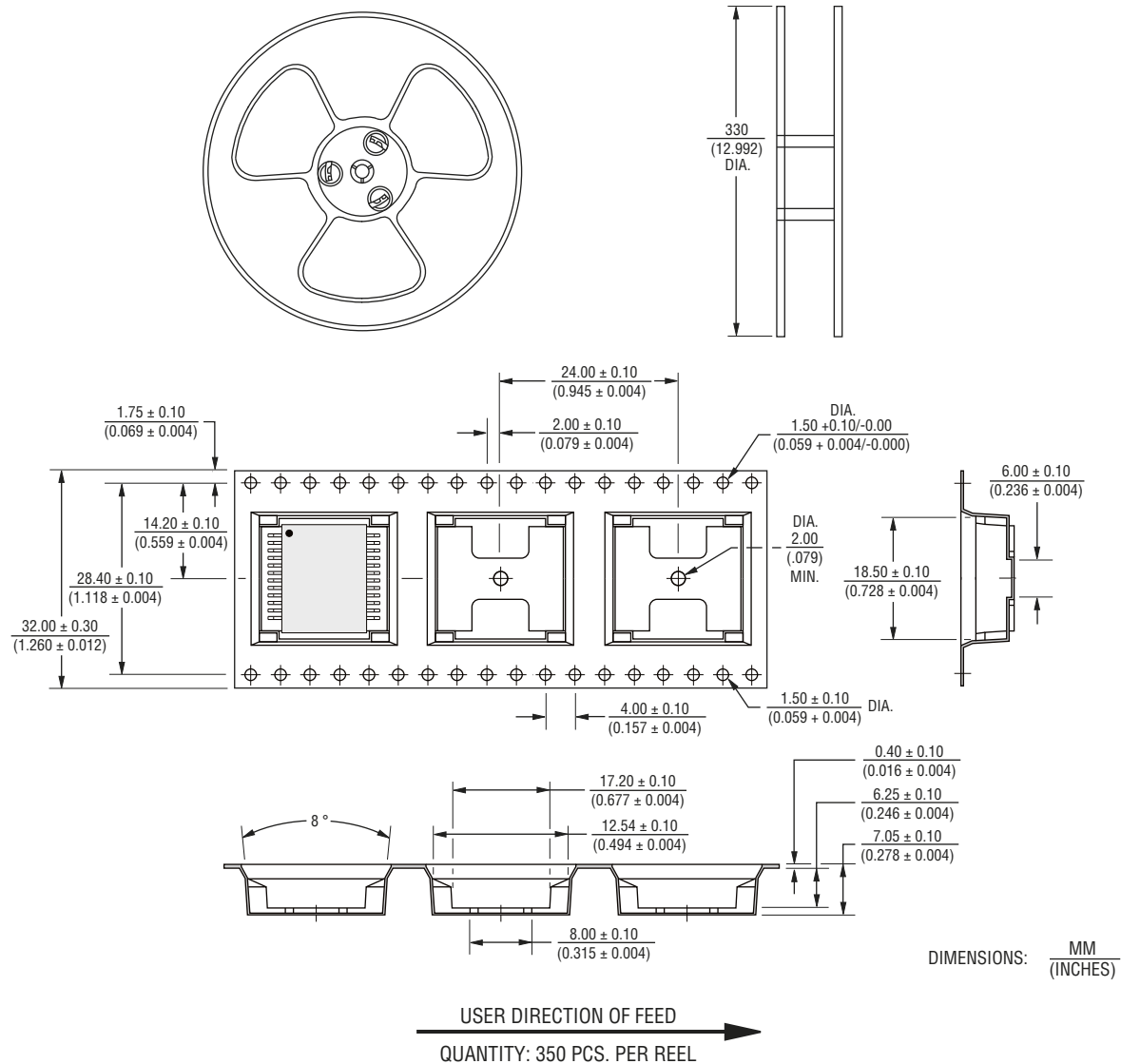
WARNING Cancer and Reproductive Harm
www.P65Warnings.ca.gov

*RoHS Directive 2002/95/EC Jan. 27, 2003 including annex and RoHS Recast 2011/65/EU June 8, 2011.
 Specifications are subject to change without notice. Users should verify actual device performance in their specific applications. The products described herein and this document are subject to specific legal disclaimers as set forth on the last page of this document, and at www.bourns.com/docs/legal/disclaimer.pdf.

SM51625EL LAN 10/100/1000 Base-T (PoE+) Transformer

BOURNS®

Packaging Specifications



BOURNS®

Asia-Pacific: Tel: +886-2 2562-4117 • Email: asiacus@bourns.com

EMEA: Tel: +36 88 520 390 • Email: eurocus@bourns.com

The Americas: Tel: +1-951 781-5500 • Email: americus@bourns.com

www.bourns.com

REV. 05/18

Specifications are subject to change without notice.

Users should verify actual device performance in their specific applications.

The products described herein and this document are subject to specific legal disclaimers as set forth on the last page of this document, and at www.bourns.com/docs/legal/disclaimer.pdf.