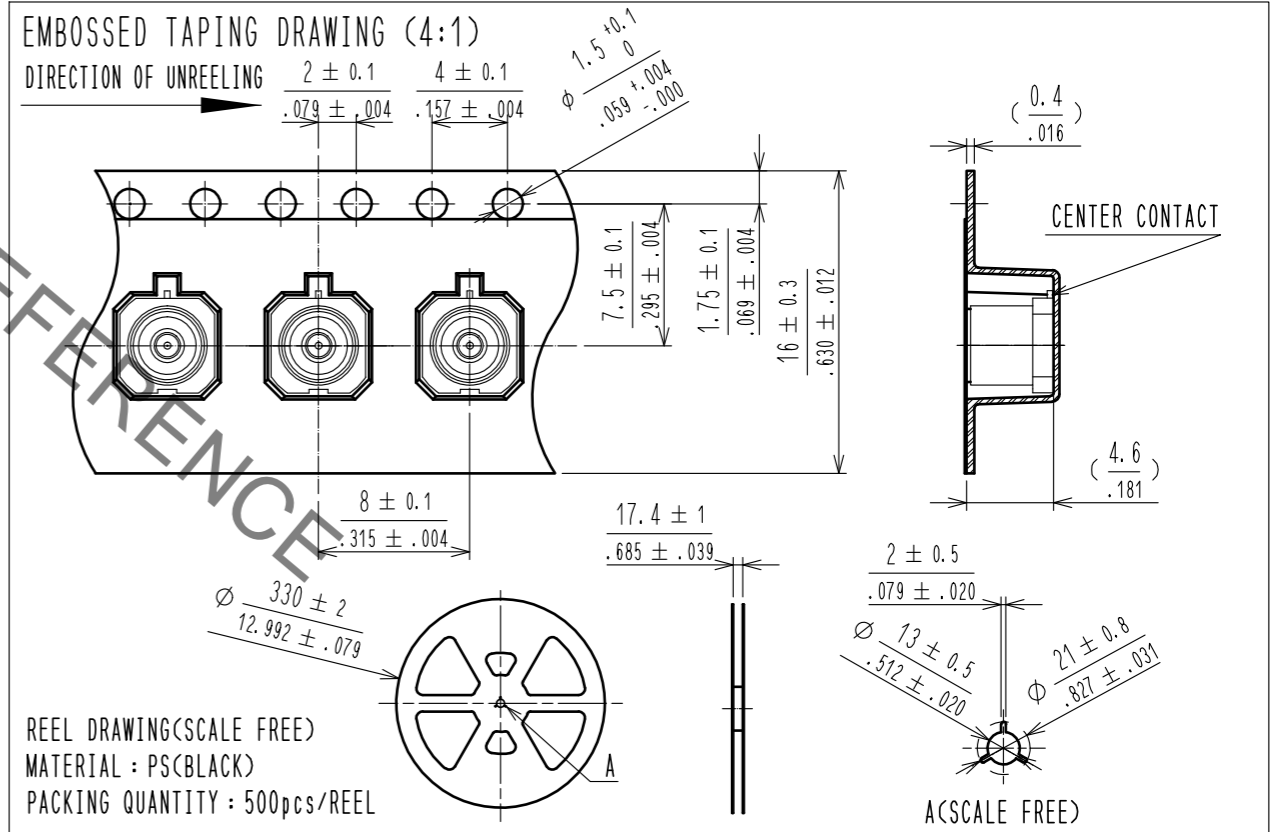
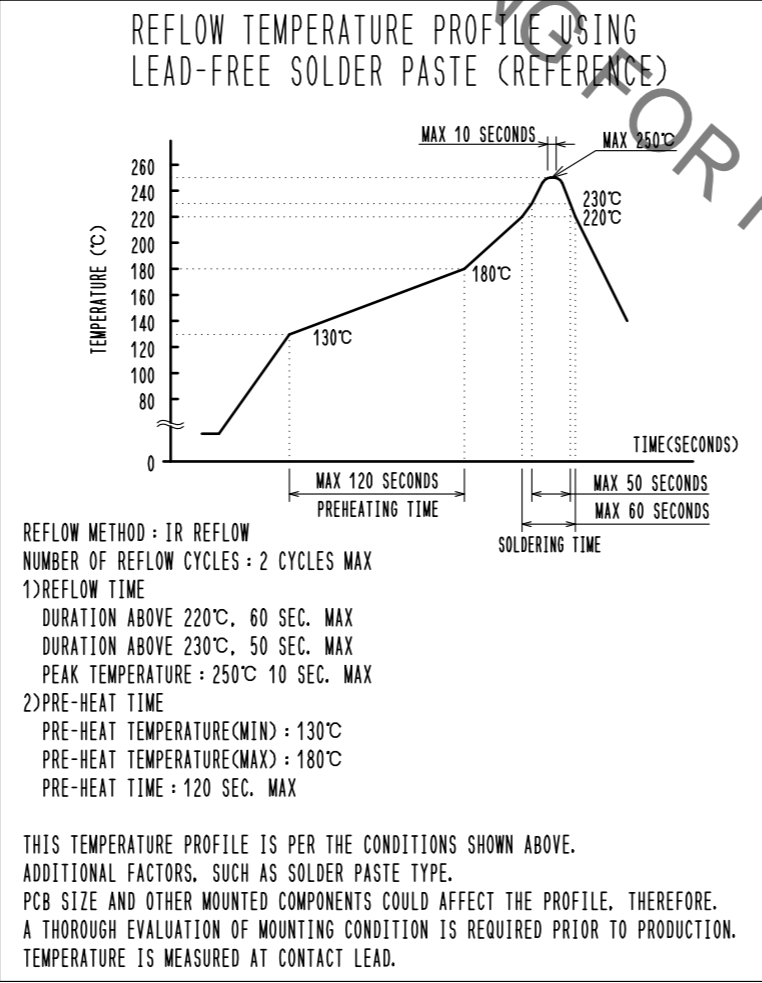
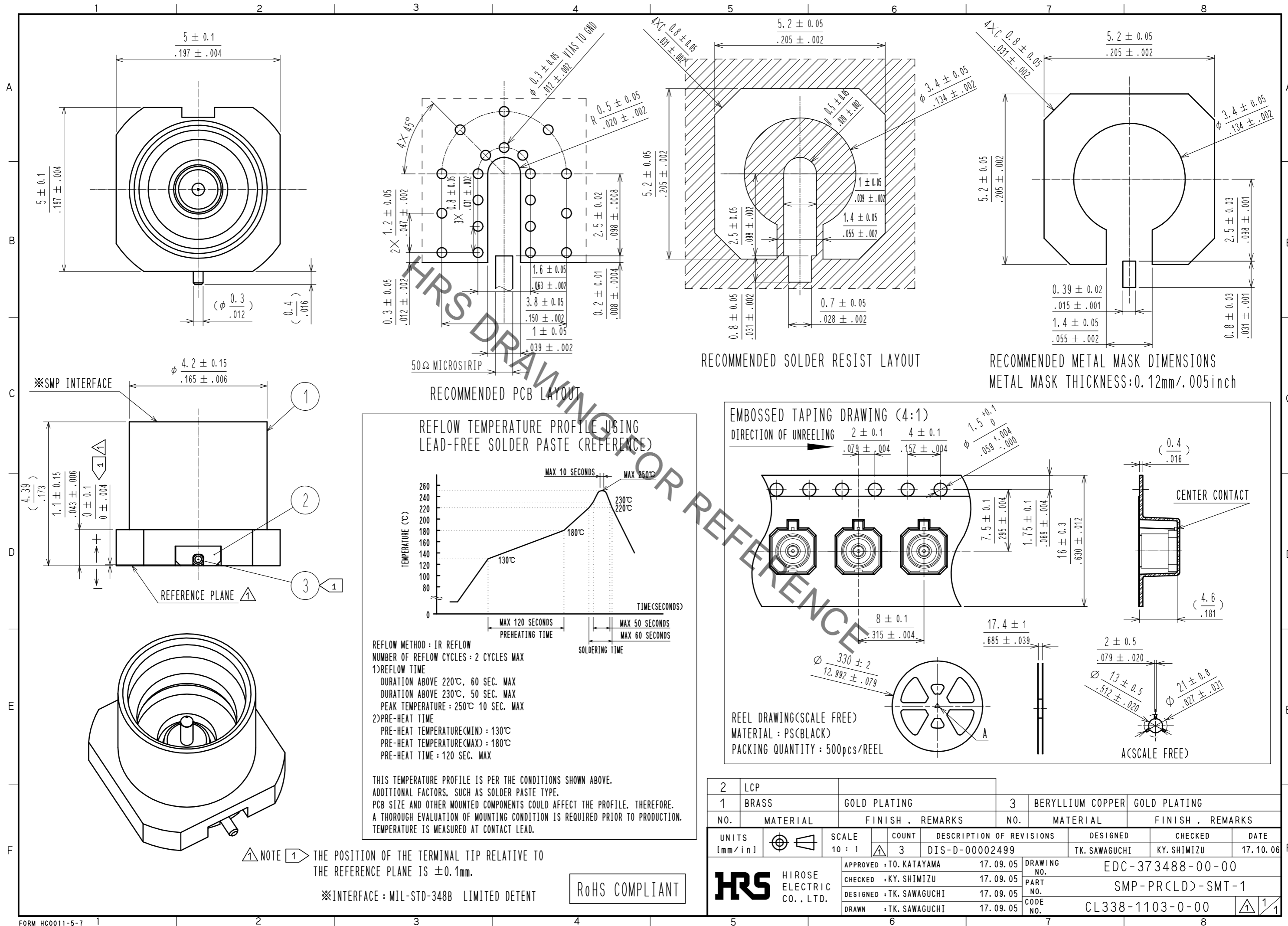


Jan.1.2022 Copyright 2022 HIROSE ELECTRIC CO., LTD. All Rights Reserved.  
 In case of consideration for using Automotive equipment / device which demand high reliability, kindly contact our sales window correspondents.



| 2                                 | LCP      |              | 3       | BERYLLIUM COPPER             | GOLD PLATING |                        |                     |               |
|-----------------------------------|----------|--------------|---------|------------------------------|--------------|------------------------|---------------------|---------------|
| 1                                 | BRASS    | GOLD PLATING |         |                              |              |                        |                     |               |
| NO.                               | MATERIAL | FINISH       | REMARKS | NO.                          | MATERIAL     | FINISH                 | REMARKS             |               |
| UNITS [mm/in]                     |          | SCALE 10 : 1 | COUNT 3 | DESCRIPTION OF REVISIONS     |              | DESIGNED TK. SAWAGUCHI | CHECKED KY. SHIMIZU | DATE 17.10.06 |
| APPROVED : TO. KATAYAMA 17.09.05  |          |              |         | DRAWING NO. EDC-373488-00-00 |              |                        |                     |               |
| CHECKED : KY. SHIMIZU 17.09.05    |          |              |         | PART NO. SMP-PR(LD)-SMT-1    |              |                        |                     |               |
| DESIGNED : TK. SAWAGUCHI 17.09.05 |          |              |         | CODE NO. CL338-1103-0-00     |              |                        |                     |               |
| DRAWN : TK. SAWAGUCHI 17.09.05    |          |              |         |                              |              |                        |                     |               |

NOTE 1 THE POSITION OF THE TERMINAL TIP RELATIVE TO THE REFERENCE PLANE IS ±0.1mm.

\*INTERFACE : MIL-STD-348B LIMITED DETENT

ROHS COMPLIANT