

## IFBF512, IFBF513 N-Channel JFET

### Features

- InterFET [N0026 Geometry](#)
- Low Noise: 3 nV/√Hz Typical
- Low Ciss: 5.0pF Maximum
- Low Leakage: 10pA Typical
- RoHS Compliant
- SMT, TH, and Bare Die Package options.

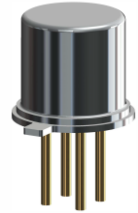
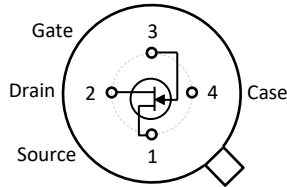
### Applications

- Low Noise High Gain
- Replacement for BF512 and BF513
- Mixers
- Oscillators
- VHF Amplifiers

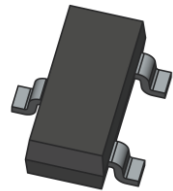
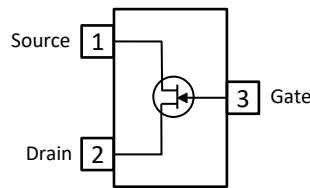
### Description

The -20V InterFET IFBF512 and IFBF513 are targeted for low noise amplifier stages as well as mixer and oscillator designs. Gate leakages are typically less than 10pA at room temperatures. The TO-72 package is hermetically sealed and suitable for military applications.

TO-72 Bottom View

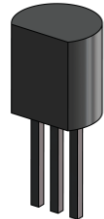
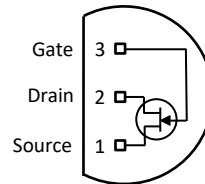


SOT23 Top View



Note: The SOT23 package is pinned out differently than the BF51x part to optimize thermal performance. Package and pinout variations are available through InterFET custom ordering.

TO-92 Bottom View



### Product Summary

Parameters		IFBF512 Min	IFBF513 Min	Unit
BV <sub>GSS</sub>	Gate to Source Breakdown Voltage	-20	-20	V
I <sub>DSS</sub>	Drain to Source Saturation Current	6	10	mA
V <sub>GS(off)</sub>	Gate to Source Cutoff Voltage	-2.2 (typ)	-3.0 (typ)	V
G <sub>FS</sub>	Forward Transconductance	6	7	mS

### Ordering Information Custom Part and Binning Options Available

Part Number	Description	Case	Packaging
IFBF512; IFBF513	Through-Hole	TO-72	Bulk
PNBF512; PNBF513	Through-Hole	TO-92	Bulk
SMPBF512; SMPBF513	Surface Mount	SOT23	Bulk
SMPBF512TR; SMPBF513TR	7" Tape and Reel: Max 3,000 Pieces 13" Tape and Reel: Max 9,000 Pieces	SOT23	Minimum 1,000 Pieces Tape and Reel
IFBF512COT; IFBF513COT	Chip Orientated Tray (COT Waffle Pack)	COT	400/Waffle Pack
IFBF512CFT; IFBF513CFT	Chip Face-up Tray (CFT Waffle Pack)	CFT	400/Waffle Pack



**Disclaimer:** It is the Buyers responsibility for designing, validating and testing the end application under all field use cases and extreme use conditions. Guaranteeing the application meets required standards, regulatory compliance, and all safety and security requirements is the responsibility of the Buyer. These resources are subject to change without notice.

## Electrical Characteristics

### Maximum Ratings (@ $T_A = 25^\circ\text{C}$ , Unless otherwise specified)

Parameters	Value	Unit
$V_{RGS}$ Reverse Gate Source and Gate Drain Voltage	-20	V
$I_{FG}$ Continuous Forward Gate Current	10	mA
$P_D$ Continuous Device Power Dissipation	300	mW
$P$ Power Derating	1.7	mW/ $^\circ\text{C}$
$T_J$ Operating Junction Temperature	-55 to 125	$^\circ\text{C}$
$T_{STG}$ Storage Temperature	-65 to 150	$^\circ\text{C}$

### Static Characteristics (@ $T_A = 25^\circ\text{C}$ , Unless otherwise specified)

Parameters	Conditions	IFBF512		IFBF513		Unit
		Min	Max	Min	Max	
$V_{(BR)GSS}$ Gate to Source Breakdown Voltage	$V_{DS} = 0V, I_G = -1\mu\text{A}$	-20		-20		V
$I_{GSS}$ Gate to Source Reverse Current	$V_{GS} = -15V, V_{DS} = 0V, T_A = 25^\circ\text{C}$		-10		-10	nA
$V_{GS(F)}$ Gate to Source Forward Voltage	$V_{DS} = 0V, I_G = 1\text{mA}$		1		1	V
$V_{GS(OFF)}$ Gate to Source Cutoff Voltage	$V_{DS} = 10V, I_D = 1\text{nA}$	-1.5		-2.5		V
$I_{DSS}$ Drain to Source Saturation Current	$V_{GS} = 0V, V_{DS} = 10V$ (Pulsed)	6.0	12	10	18	mA

### Dynamic Characteristics (@ $T_A = 25^\circ\text{C}$ , Unless otherwise specified)

Parameters	Conditions	IFBF512		IFBF513		Unit
		Min	Max	Min	Max	
$G_{FS}$ Forward Transconductance	$V_{DS} = 10V, V_{GS} = 0V, f = 1\text{kHz}$	6		7		mS
$G_{OS}$ Output Conductance	$V_{DS} = 10V, V_{GS} = 0V, f = 1\text{MHz}$		100		120	$\mu\text{S}$
$C_{ISS}$ Input Capacitance	$V_{DS} = 15V, V_{GS} = 0V, f = 1\text{MHz}$		5		5	pF
$C_{RSS}$ Reverse Transfer Capacitance	$V_{DS} = 15V, V_{GS} = 0V, f = 1\text{MHz}$		1.5		1.5	pF

## SOT23 (TO-236AB) Mechanical and Layout Data

### Package Outline Data



1. All linear dimensions are in millimeters.
2. Package weight approximately 0.12 grams
3. Molded plastic case UL 94V-0 rated
4. For Tape and Reel specifications refer to InterFET CTC-021 Tape and Reel Specification, Document number: IF39002
5. Bulk product is shipped in standard ESD shipping material
6. Refer to JEDEC standards for additional information.

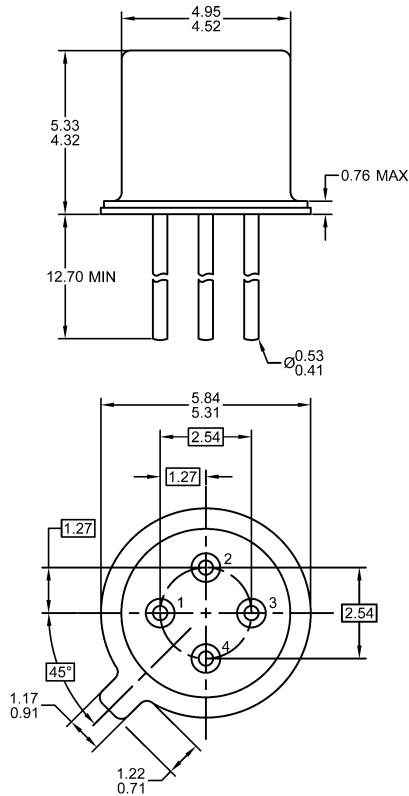
### Suggested Pad Layout



1. All linear dimensions are in millimeters.
2. The suggested land pattern dimensions have been provided for reference only. A more robust pattern may be desired for wave soldering.

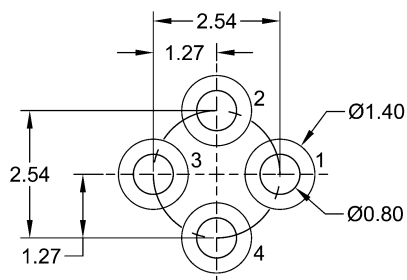
## TO-72 Mechanical and Layout Data

### Package Outline Data



1. All linear dimensions are in millimeters.
2. Four leaded device. Not all leads are shown in drawing views.
3. Package weight approximately 0.31 grams
4. Bulk product is shipped in standard ESD shipping material
5. Refer to JEDEC standards for additional information.

### Suggested Through-Hole Layout



1. All linear dimensions are in millimeters.
2. The suggested land pattern dimensions have been provided as a straight lead reference only. A more robust pattern may be desired for wave soldering and/or bent lead configurations.