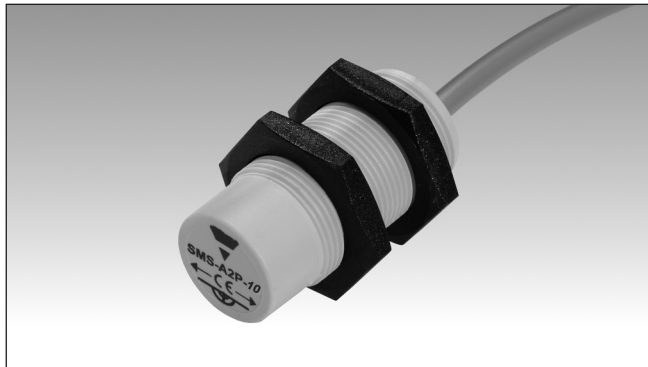


Safety Magnetic Sensors

Cylindrical Safety Magnetic Sensors

Type SMSA2P10

CARLO GAVAZZI



- Suitable for applications in safety category 3 in accordance with EN ISO13849-1:2015 when connected to appropriate safety devices
- 1 NO output
- Cable output connection
- Cylindrical housing
- Multiple flux coding
- In compliance with CEI EN 60947-5-3:2000

Product Description

The SMSA2P10 is designed applications up safety Category 3 in accordance with EN ISO 12100:2010, EN 60204-1 and EN 1088. It is characterized by multiple flux coding and is suited for EN ISO13849-1:2015 when connected to appropriate safety devices.

Ordering Key

SMS A2 P 10

Safety magnetic sensor
 Diameter
 Case material
 Contact type

Type Selection

Output	Operating distance	Safety category	Item code
1 NO	16 mm	3	SMS A2 P 10

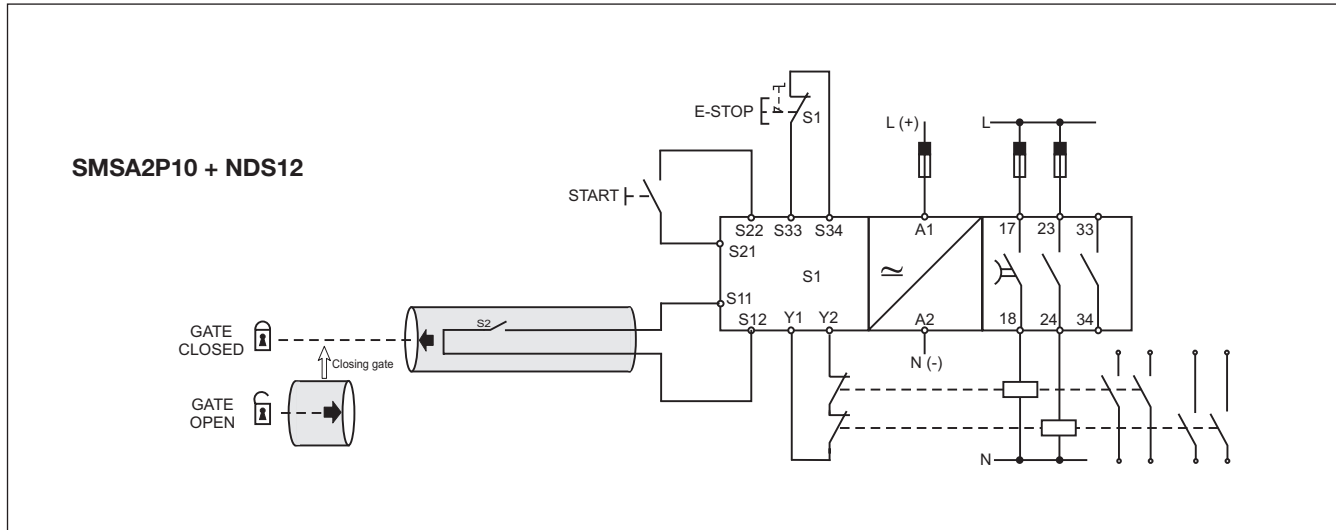
Output Specifications

Output	Category 3 (EN ISO13849-1:2015) 1 NO
Output connection	Cable (PVC, AWG 22, L = 2 m, 2 x 0.35 mm ²)
Contact ratings Max Switching Voltage Max Switching Current Max Switching Power	100 VAC 0.25 A 5 VA

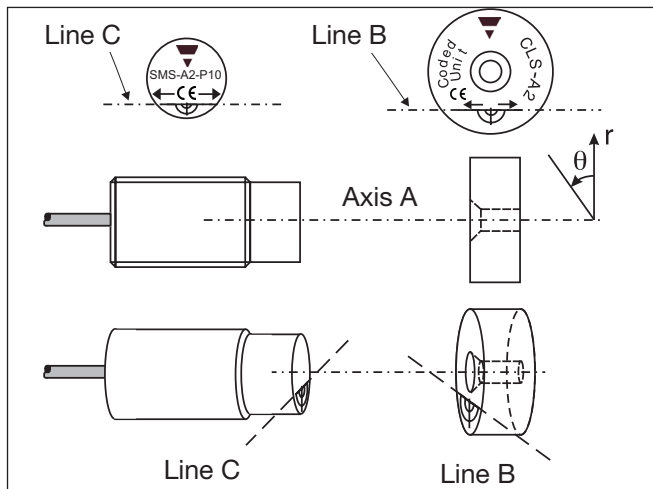
General Specifications

Operating distance ON	16 ± 5 mm
Release distance OFF	20 ± 6 mm
Reset distance	20 ± 6 mm
Suitable magnetic unit	CLSA2
Misalignment	max ± 2 mm
Housing Dimensions Material	M18x1 PBT + 30% glass
Weight	Approx. 70 g
Environment Degree of protection Operating temperature Storage temperature	IP 67 -25 ÷ +70 °C -25 ÷ +70 °C
CE-marking	Yes

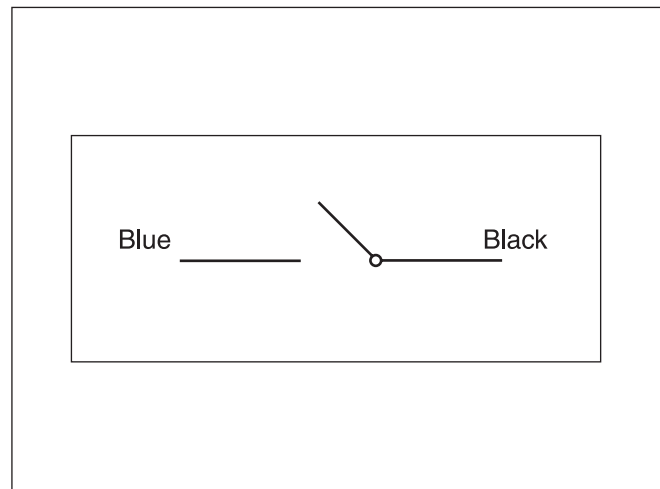
Application



Operating Directions



Wiring Diagrams



Dimensions

