

## Battery Holders

### Battery Holders SMT and Through Hole

#### Specifications

- Holder material: heat resistant, glass fiber filled LCP. Flammability rating UL 94 V-0
- Battery contacts: spring stainless steel 301 nickel plated throughout, thickness 10µm. Solder area tin/lead plated throughout, thickness 10µm.
- The contact resistance of the (+) and (-) contacts to the cell is less than 100mOhm (measured through AC 1kHz).

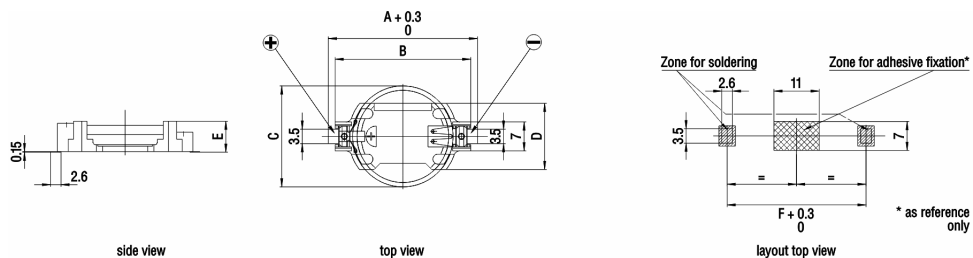
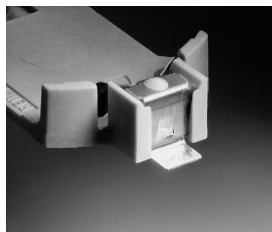
#### Characteristics

- Easy and fast replacement of battery
- Designed for automatic "pick and place" mounting
- Safe retention of button cell
- Automated battery mounting possible
- Clear separation of connections
- Safety against short circuits
- Safety against inverse polarity (polarized)
- Safety against leak currents
- Solid design

# Battery Holders

## Battery Holders SMT and Through Hole (cont.)

### SMT Battery Holders

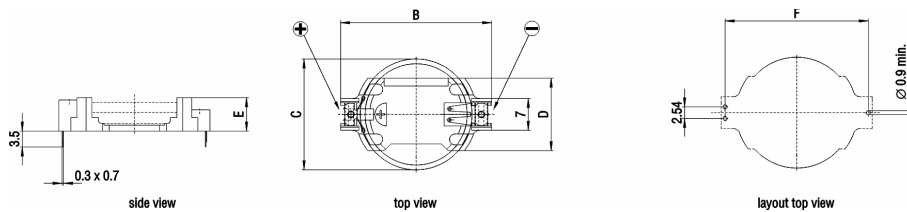
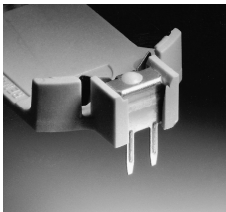


RENATA Part name	RENATA Part no.	For use with RENATA cell	Weight (g)	Maximum dimensions (mm)					
				A	B	C	D	E	F
SMTU357-LF	701132	357	0.85	23.6	19.9	11.6	12.0	7.55	21.0
SMTU1225-LF	701115	CR1225	0.70	23.7	20.3	12.5	12.7	4.8	21.1
SMTU1632-LF	701130	CR1632	0.80	27.7	24.3	16.0	14.5	5.4	25.1
SMTU2032-LF	701116	CR2032	0.95	32.0	28.5	20.0	16.1	5.4	29.3
SMTU2430-LF	701117	CR2430	1.05	36.5	33.0	24.5	16.1	4.9	33.8
SMTU2450N-LF	701118	CR2450N	1.45	36.6	33.0	24.5	16.1	7.5	33.8
SMTU2477N-LF	701119	CR2477N	1.65	36.7	33.0	24.5	16.1	10.3	33.8

# Battery Holders

## Battery Holders SMT and Through Hole (cont.)

### Through Hole



RENATA Part name	RENATA Part no.	For use with RENATA cell	Weight (g)	Maximum dimensions (mm)				
				B	C	D	E	F
HU357-LF	701133	357	0.84	19.9	11.6	12.0	7.4	18.35
HU1225-LF	701105	CR1220	0.70	20.3	12.5	12.7	4.6	18.7
HU1632-LF	701131	CR1632	0.80	24.3	16.0	14.5	5.2	22.7
HU2032-LF	701106	CR2032	0.95	28.5	20.0	16.1	5.2	26.9
HU2430-LF	701107	CR2430	1.05	33.0	24.5	16.1	4.7	31.5
HU2450N-LF	701108	CR2450N	1.45	33.0	24.5	16.1	7.3	31.5
HU2477N-LF	701109	CR2477N	1.65	33.0	24.5	16.1	10.1	31.5

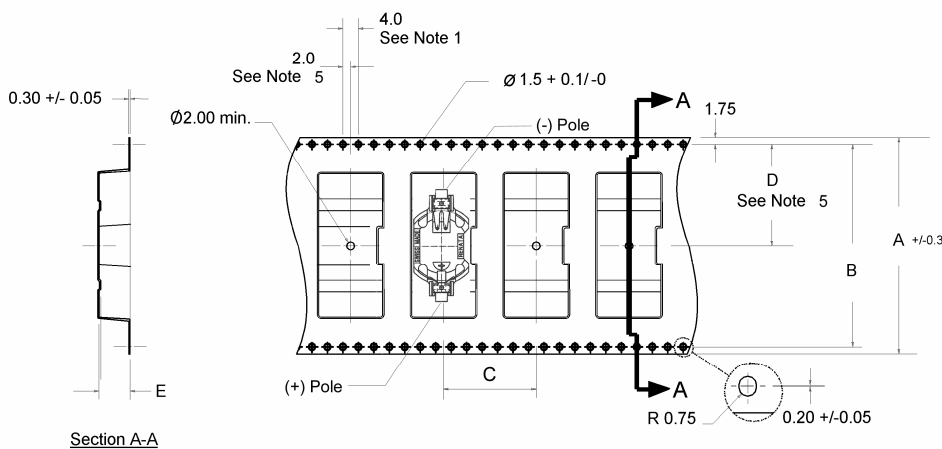
Rev. 01/06

# Battery Holders

## Battery Holders SMT and Through Hole (cont.)

### Tape & Reel Packing for SMTU-Battery Holders - Technical Specifications

#### Dimensions and Quantities



RENATA Part name	RENATA Part number	Quantity per reel	Dimensions (mm)				
			A	B	C	D	E
SMTU1225-LF.TR	701230	750 pcs.	44.0	40.4	16.0	20.2	5.7
SMTU1632-LF.TR	701231	520 pcs.	44.0	40.4	20.0	20.2	6.1
SMTU2032-LF.TR	701232	485 pcs.	44.0	40.4	24.0	20.2	6.0
SMTU2430-LF.TR	701233	490 pcs.	56.0	52.4	24.0	26.2	5.7
SMTU2450N-LF.TR	701234	350 pcs.	56.0	52.4	24.0	26.2	8.2
SMTU2477N-LF.TR	701235	250 pcs.	56.0	52.4	24.0	26.2	10.8

- Notes:
1. 10 sprocket hole pitch cumulative tolerance +/- .02
  2. Camber not to exceed 1 mm in 100 mm