

THIS DOCUMENT CONTAINS PROPRIETARY DATA OF POLARIS INDUSTRIAL ENTERPRISES, INC. NO DISCLOSURE, REPRODUCTION, OR USE OF ANY PART THEREOF MAY BE MADE EXCEPT BY WRITTEN PERMISSION.

REV.	BY	DATE	APPRVD.
G	AT	12-11-01	

P/N  
ADDED MOUNTING PLATE

SP22G

**SPECIFICATIONS**

**ELECTRICAL**

RESISTANCE RANGE-----500, 1K, 2K, 5K, 10K, 20K, 50K, 100K  
 RESISTANCE TOLERANCE-----±10%  
 LINEARITY INDEPENDENT-----±1.0%  
 POWER RATING-----1.0 WATTS  
 ELECTRICAL ANGLE-----340°±4°  
 END VOLTAGE-----0.2% MAX  
 RESOLUTION-----ESSENTIALLY INFINITE  
 OUTPUT SMOOTHNESS-----BELOW 0.1% AGAINST INPUT VOLTAGE  
 CONTACT RESISTANCE VARIATION-----BELOW 2%  
 INSULATION RESISTANCE-----1000MEG OHMS @ 500VDC MIN.  
 DIELECTRIC STRENGTH-----500 VAC

**MECHANICAL**

MECHANICAL ANGLE-----CONTINUOUS  
 ROTATIONAL TORQUE-----0.7 OZ.IN.  
 SHAFT END PLAY-----.006MAX.  
 TEMPERATURE COEFFICIENT-----±400 PPM/°C  
 WEIGHT, APPROX.-----1.1 OZ.  
 ROTATIONAL LIFE-----10,000,000 TURNS

**ENVIRONMENTAL**

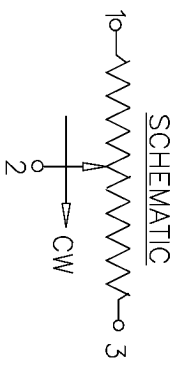
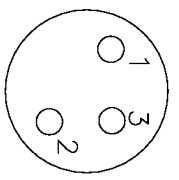
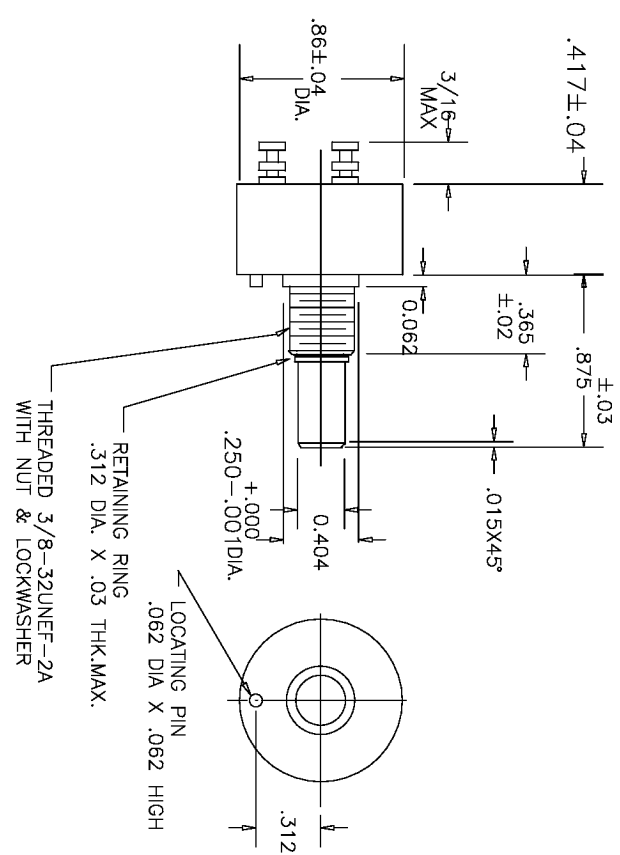
OPERATING TEMPERATURE-----55°C TO +105°C  
 TEMPERATURE COEFFICIENT-----±400 P.P.M./°C  
 VIBRATION-----10HZ TO 2000HZ 15G  
 SHOCK-----50G 11MS  
 MOISTURE RESISTANCE-----40°C 95%RH 120 HOURS

**MATERIALS**

HOUSING-----HIGH TEMPERATURE PLASTIC  
 TERMINALS-----SOLDERABLE DOUBLE TURRET  
 SHAFT-----STAINLESS STEEL  
 ELEMENT-----CONDUCTIVE PLASTIC

**OPTIONS**

FRONT SHAFT MODIFICATIONS  
 CENTER TAP  
 O-RING SHAFT SEAL  
 SEALED BODY  
 SPECIAL ELECTRICAL / MECHANICAL ANGLES  
 SPECIAL LINEARITY & RESISTANCE TOLERANCES  
 SERVO MOUNT ( SEE SP22GS)



**TOLERANCES**

XX = +/- .100" FRACT. = +/- 1/64"  
 XXX = +/- .005" ANGLES = +/- 1/2"  
 ALL SPECIFICATIONS SUBJECT TO CHANGE WITHOUT NOTICE.

SCALE	DATE:	10-19-00
NONE	BY	
	APPRVD	BT
CODE IDENT: 19477		



ETI SYSTEMS  
CARLSBAD CALIFORNIA

**TITLE**

SINGLE TURN POTENTIOMETER

**PART NO.**

SP22G