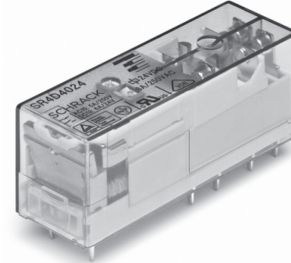


**Force Guided Relay SR4 D/M**

- 4 pole relay with force guided contacts according to EN 61810-3 (formerly EN50205)
- Compact design and space efficient

**Typical applications**

Emergency shut-off, press control, machine control, elevator and escalator control, safety relays



F0244-C



**Approvals**

VDE Cert. No. 40005334, UL E214025, TUV 968/EL 230, CCC 2020970303000303

Technical data of approved types on request

**Contact Data**

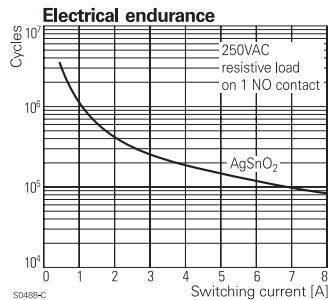
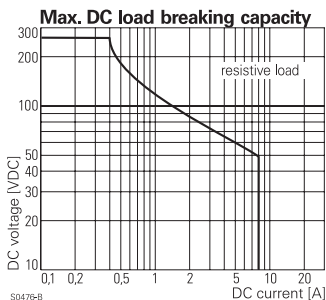
|   |  |
|---|--|
| Contact arrangement                       | 3 form A + 1 form B contacts<br>3 NO + 1 NC<br>2 form A + 2 form B contacts<br>2 NO + 2 NC |
| Rated voltage                             | 250VAC   |
| Max. switching voltage                    | 400VAC   |
| Rated current                             | 8A   |
| Contact material                          | AgSnO <sub>2</sub>   |
| Contact style                             | single contact, force guided<br>type A according to EN61810-3<br>(formerly EN50205)        |
| Min. recommended contact load             | 5V/10mA  |
| Initial contact resistance                | ≤100mΩ at 1A, 24VDC<br>≤20Ω at 10mA, 5VDC  |
| Frequency of operation, with/without load | 6/150min <sup>-1</sup>   |

**Contact ratings**

| Type               | Contact             | Load                              | Cycles             |
|--------------------|---------------------|-----------------------------------|--------------------|
| <b>IEC 61810</b>   |                     |                                   |                    |
| SR4                | 1xA (NO)            | 8A, 250VAC, cosφ=1, 70°C          | 20x10 <sup>3</sup> |
| SR4                | 1xB (NC)            | 5A, 250VAC, cosφ=1, 70°C          | 20x10 <sup>3</sup> |
| <b>UL 508</b>      |                     |                                   |                    |
| SR4                | A/B (NO/NC)         | 8A, 250VAC, general purpose, 70°C | 6.000              |
| SR4                | 1xA (1xNO)          | R300, B300                        | 6.000              |
| SR4                | 1xB (1xNC)          | R300                              | 6.000              |
| <b>EN60947-5-1</b> |                     |                                   |                    |
| SR4                | 1xA/1xB (1xNO/1xNC) | 3A, 24VDC, DC13                   | 6.050              |
| SR4                | 1xA (1xNO)          | 3A, 250VAC AC-15                  | 6.050              |

More ratings and information see product specification 2158002

Mechanical endurance 10x10<sup>6</sup> operations



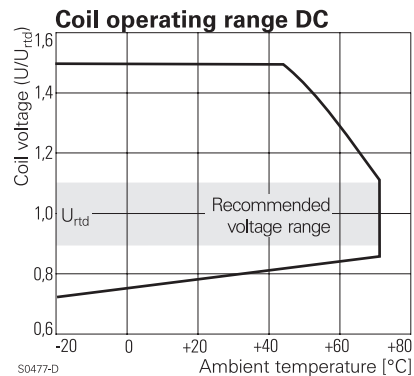
**Coil data**

Coil voltage range 5 to 110VDC

**Coil versions, DC-coil**

| Coil code | Rated voltage VDC | Operate voltage VDC | Release voltage VDC | Coil resistance Ω±10% | Rated power mW |
|-----------|-------------------|---------------------|---------------------|-----------------------|----------------|
| 005       | 5                 | 3.8                 | 0.5                 | 31                    | 806            |
| 006       | 6                 | 4.5                 | 0.6                 | 45                    | 800            |
| 009       | 9                 | 6.8                 | 0.9                 | 101                   | 802            |
| 012       | 12                | 9.0                 | 1.2                 | 180                   | 800            |
| 015       | 15                | 11.3                | 1.5                 | 281                   | 801            |
| 018       | 18                | 13.5                | 1.8                 | 405                   | 800            |
| 021       | 21                | 16.0                | 2.1                 | 551                   | 800            |
| 024       | 24                | 18.0                | 2.4                 | 720                   | 800            |
| 036       | 36                | 27.0                | 3.6                 | 1620                  | 800            |
| 040       | 40                | 30.0                | 4.0                 | 2000                  | 800            |
| 048       | 48                | 36.0                | 4.8                 | 2880                  | 800            |
| 060       | 60                | 45.0                | 6.0                 | 4500                  | 800            |
| 085       | 85                | 63.8                | 8.5                 | 9031                  | 800            |
| 110       | 110               | 83.0                | 11.0                | 15125                 | 800            |

All figures are given for coil without pre-energization, at ambient temperature +23°C.



**Force Guided Relay SR4 D/M** (Continued)

**Insulation Data**

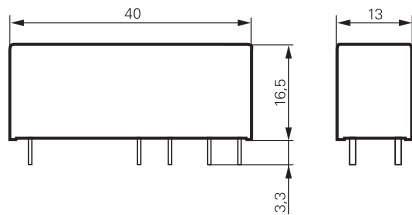
|  |                    |
|--|--------------------|
| Initial dielectric strength                |                    |
| between open contacts                      | 1500Vrms           |
| between contact and coil                   | 4000Vrms           |
| between adjacent contacts                  | 2500Vrms           |
| Clearance/creepage                         |                    |
| between open contacts                      | microdisconnection |
| between contact and coil                   | ≥10/10mm           |
| between adjacent contacts                  | ≥3/3.5mm           |
| Insulation to EN 50178, type of insulation |                    |
| between contact and coil                   | reinforced         |
| between adjacent contacts                  | basic              |

**Other Data**

|   |              |
|---|--------------|
| Material compliance: EU RoHS/ELV, China RoHS, REACH, Halogen content refer to the Product Compliance Support Center at <a href="http://www.te.com/customer-support/rohssupportcenter">www.te.com/customer-support/rohssupportcenter</a> |              |
| Ambient temperature   | -25 to 70°C  |
| Category of environmental Protection  |              |
| IEC 61 810  | RTIII        |
| Weight  | 30g          |
| Resistance to soldering heat THT  |              |
| IEC 60068-2-20  | 260°C/5s     |
| Packaging/unit  | tube/10 pcs. |

For more detailed information see product specification 2158002

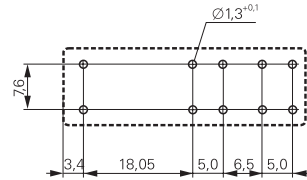
**Dimensions**



S0412-BH

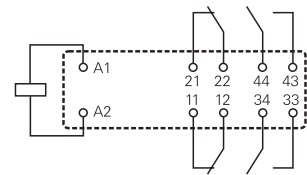
**PCB layout / terminal assignment**

Bottom view on solder pins



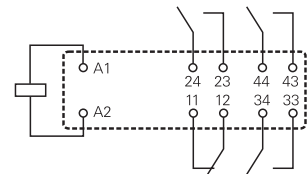
S0413-BC

2 form A + 2 form B, 2 NO + 2 NC contacts



S0413-BB

3 form A + 1 form B, 3 NO + 1 NC contacts



S0413-BA

**Product code structure**

Typical product code **SR4 D 4 012**

|                            |  |
|----------------------------|--|
| <b>Type</b>                | <b>SR4</b> Relay with force guided contacts SR4  |
| <b>Contact arrangement</b> | <b>D</b> 2 form A + 2 form B contacts (2 NO + 2 NC)<br><b>M</b> 3 form A + 1 form B contacts (3 NO + 1 NC) |
| <b>Contact material</b>    | <b>4</b> AgSnO <sub>2</sub>  |
| <b>Coil</b>                | Coil code: please refer to coil versions table (e.g. 012=12VDC)<br>Other types on request                  |