

SRP-ESP315

Distributed Solar Power Station Monitoring and Management Solution



Features

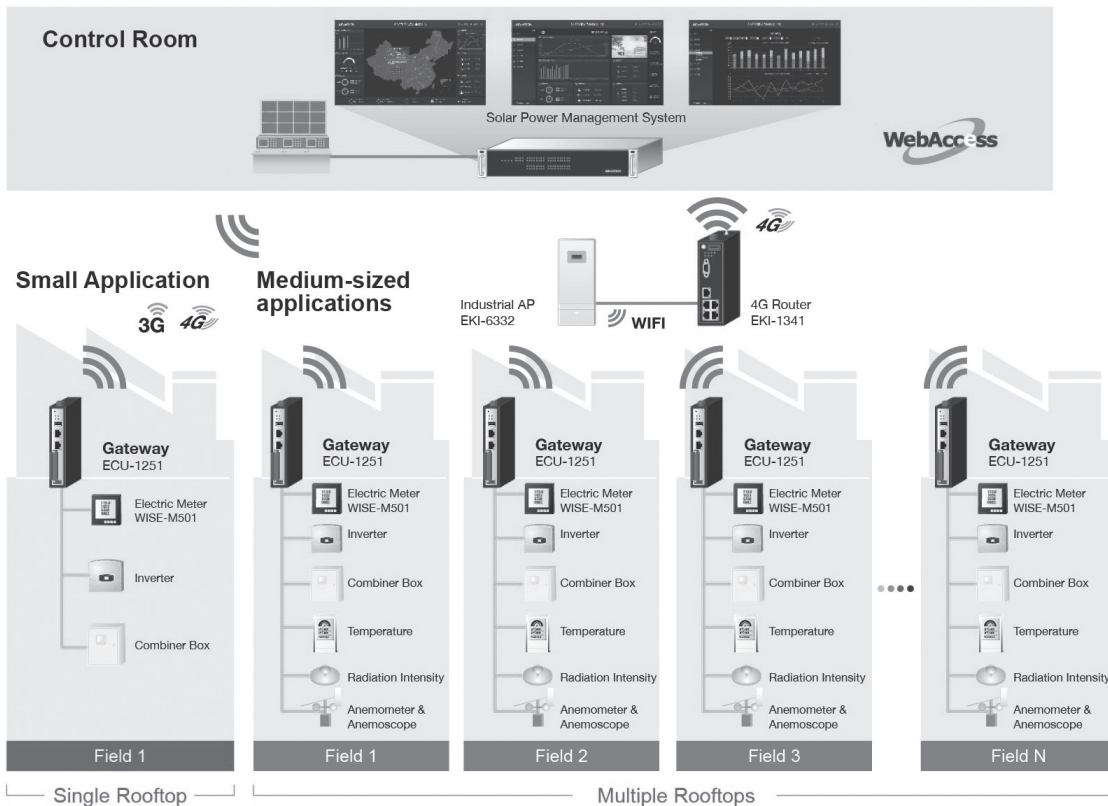
- Highly stable and reliable centralized monitoring and management system for key components
- Real-time efficiency visualization, can be broken down by group, station, inverter
- Smart alarm notification through SMS, e-mail and mobile APP
- Intelligent analysis of power generation data, including performance and loss at each stage
- Intact data guaranteed by store and forward when communication fails
- Over 2GW power stations can be managed with a single system
- Cross browser and platform support powered by the WebAccess Dashboard



Introduction

Solar power management system (SPMS) aims to improve the efficiency of power generation and reduce the cost of operation and maintenance. It optimizes the power station in an intelligent way to effectively enhance power generation. The system integrates hardware and software into one, and adopts an acquisition gateway which supports multi-protocols and multi-network communication to realize the accurate acquisition of power station data. With the help of high-performance application servers for electrical use only, SPMS, the WebAccess Dashboard based system can perform remote visual management and mass data analysis of power stations. Moreover, this system also integrates various monitoring data in a unified maintenance platform, making it ideal for different solar power stations where staff can realize many intelligent monitoring and management tasks, such as daily operations, upper system monitoring, station management, and more.

System Diagram



System Major Functions

Hierarchical Visualized Monitoring

- Hierarchical visualization of Group / Power Station KPI
- Hierarchical visualization of power station and equipment information
- Hierarchical visualization of integrated Web GIS



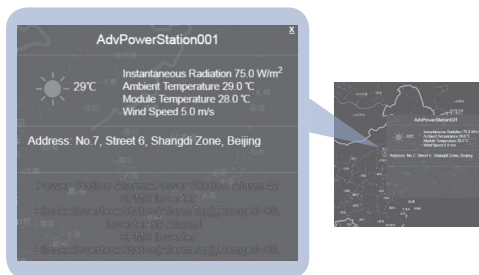
Operations Management

- Supports Web GIS
- Supports one-click export of Excel reports and automatic sending of emails
- Manual entry of device maintenance information and automatic logging of system logs
- Hierarchical rights management



Smart Alarm

- Supports for real-time warning / alarm and e-mail, SMS and other alarm notification way
- Acknowledge one or all alarms via one-click and provide historical alarm event query functions



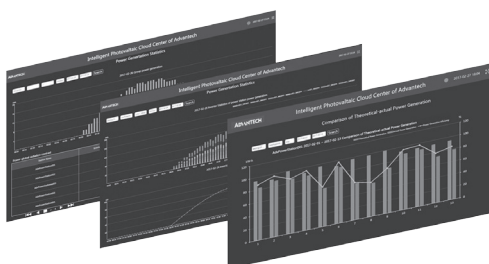
System Customization

- Customization of monitor screen and data report
- Customization of customer system information
- Customization of power station and equipment information



Intelligent Analysis

- Supports diversified comparative analysis of power generation data, such as power generation statistics, the comparison of power generation efficiency and theoretical-actual power generation, and the daily load curve
- Supports multi-granularity report statistics, to provide power station integrated power generation and power generation statements and other functions



Mobile Operation and Maintenance APP

- Master the overall operation of the group / power station / inverter
- Real-time intelligent alarm
- Power generation statistics

