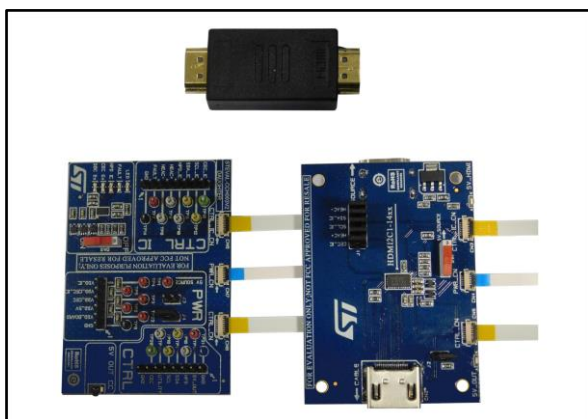


## HDMI interface evaluation kit based on the HDMI2C1-14HD (main board plus daughter board)

Data brief



### Description

The STEVAL-CCH003V2 evaluation kit demonstrates how the HDMI2Cx-14HD series can be a simple and fast means to reach full compliance with stringent HDMI™ 1.4 standards.

This evaluation kit is made up of a main board which can accept an optional daughter board through dedicated connectors.

It provides easy access to all HDMI control stage signals and the main board power supplies (+5 V of the DDC bus, +3.3 V of the CEC bus, and VDD of the ASIC HDMI).

The main board can be used in a standalone configuration as a plug and play board to show the interface is working properly. It can also be used to demonstrate the capability of the HDMI2C1-14HD device to drive cables with a high capacitance load (poor quality or long HDMI cable).

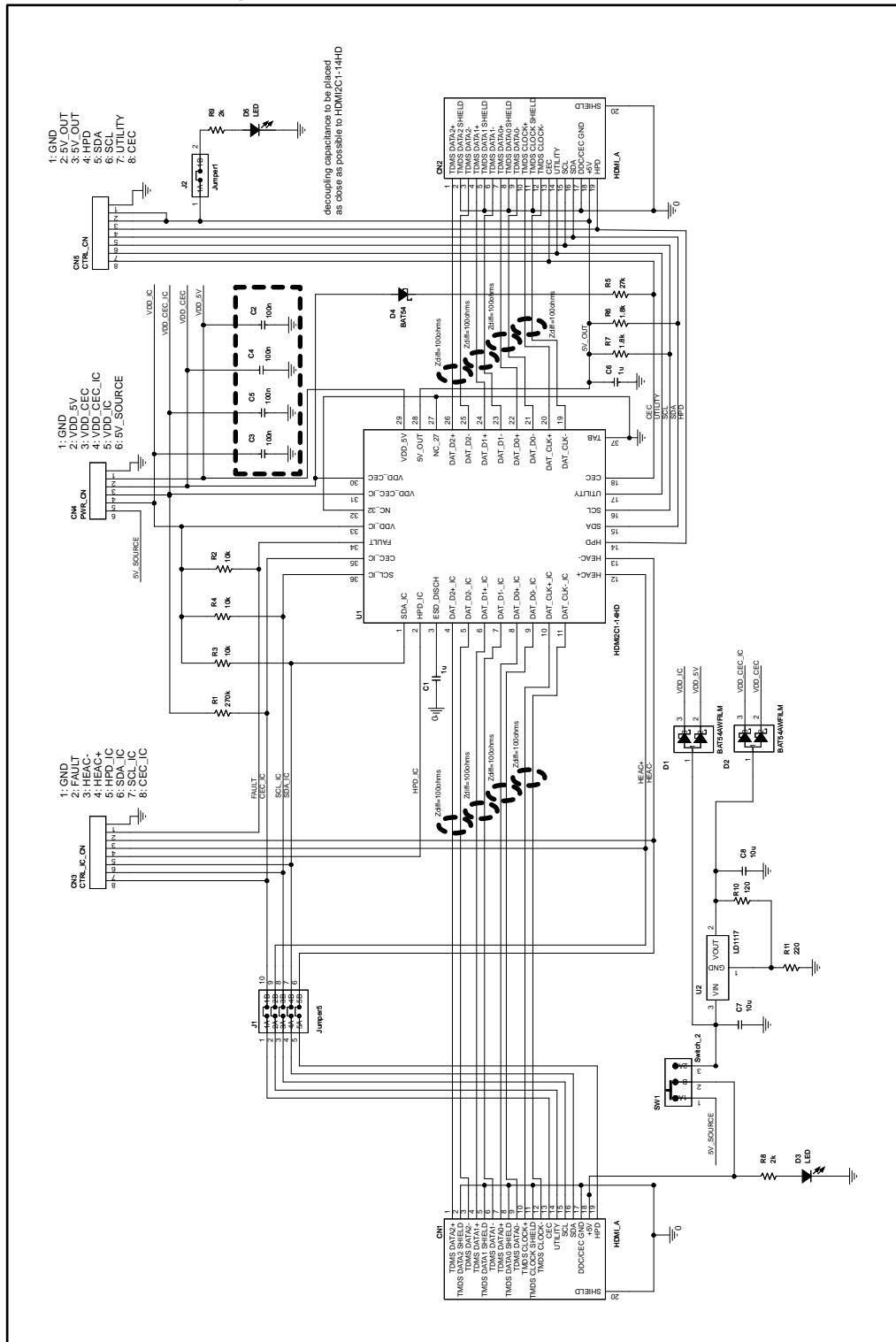
Finally, it can be used to evaluate power consumption in various operating configurations (e.g., transmitter in standby mode, various ASIC power supply voltage values and ruggedness against external stresses).

### Features

- Interface between any HDMI source equipment (transmitter) and an HDMI sink (receiver) through an HDMI cable
- HDMI™ 2.0 (4K / 2K 60 fps) compliant from -40 to 85 °C
- Fully integrated ESD protection
- RoHS compliant

# 1 Schematic diagram

Figure 1: STEVAL-CCH003V2 circuit schematic



## 2 Revision history

Table 1: Document revision history

Date	Version	Changes
06-Sep-2016	1	Initial release
11-Nov-2016	2	Updated features on the cover page